

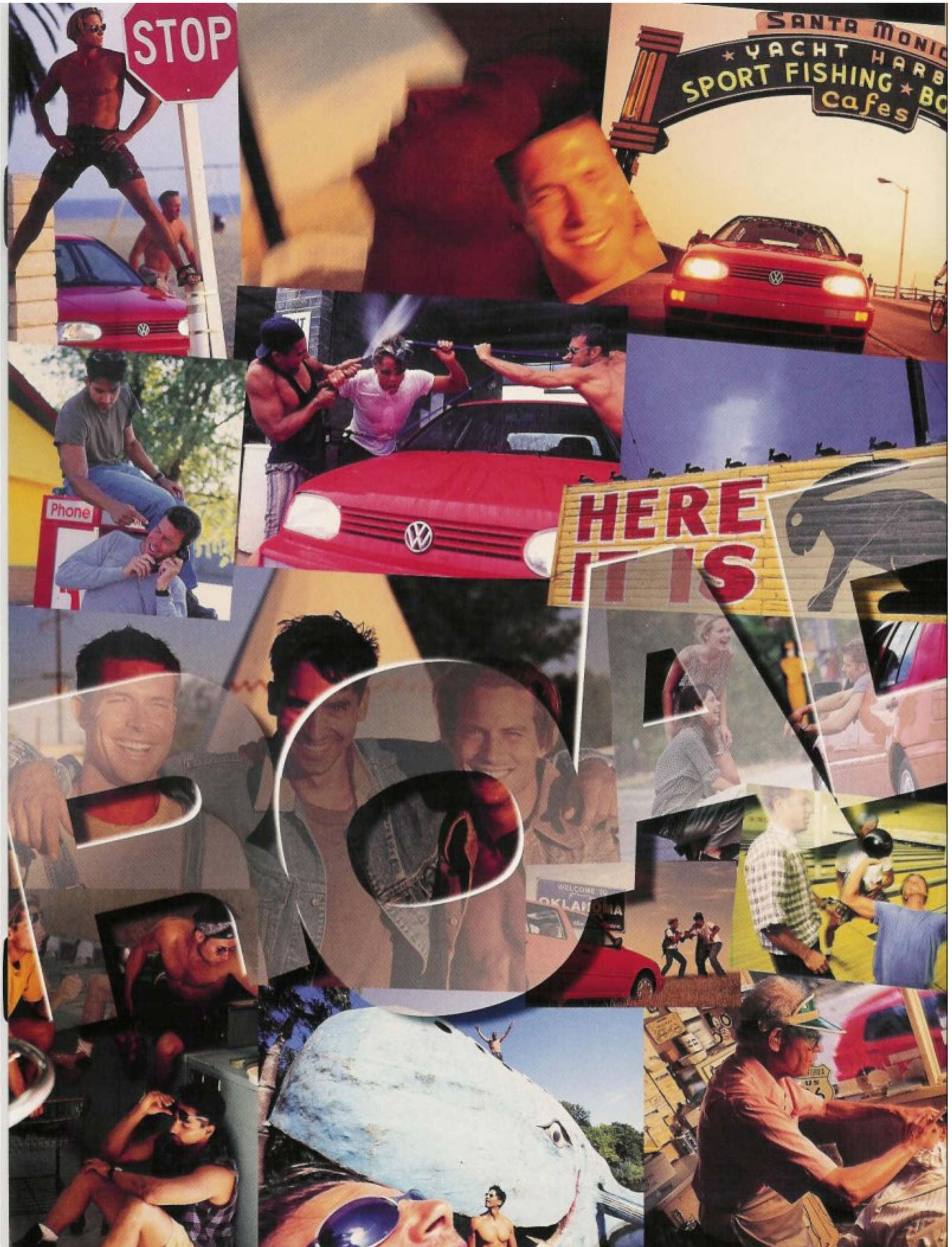
Scott's girlfriend dumped him (again),

Brad had more than **Golf**  **ten bucks** in his pocket (for once)

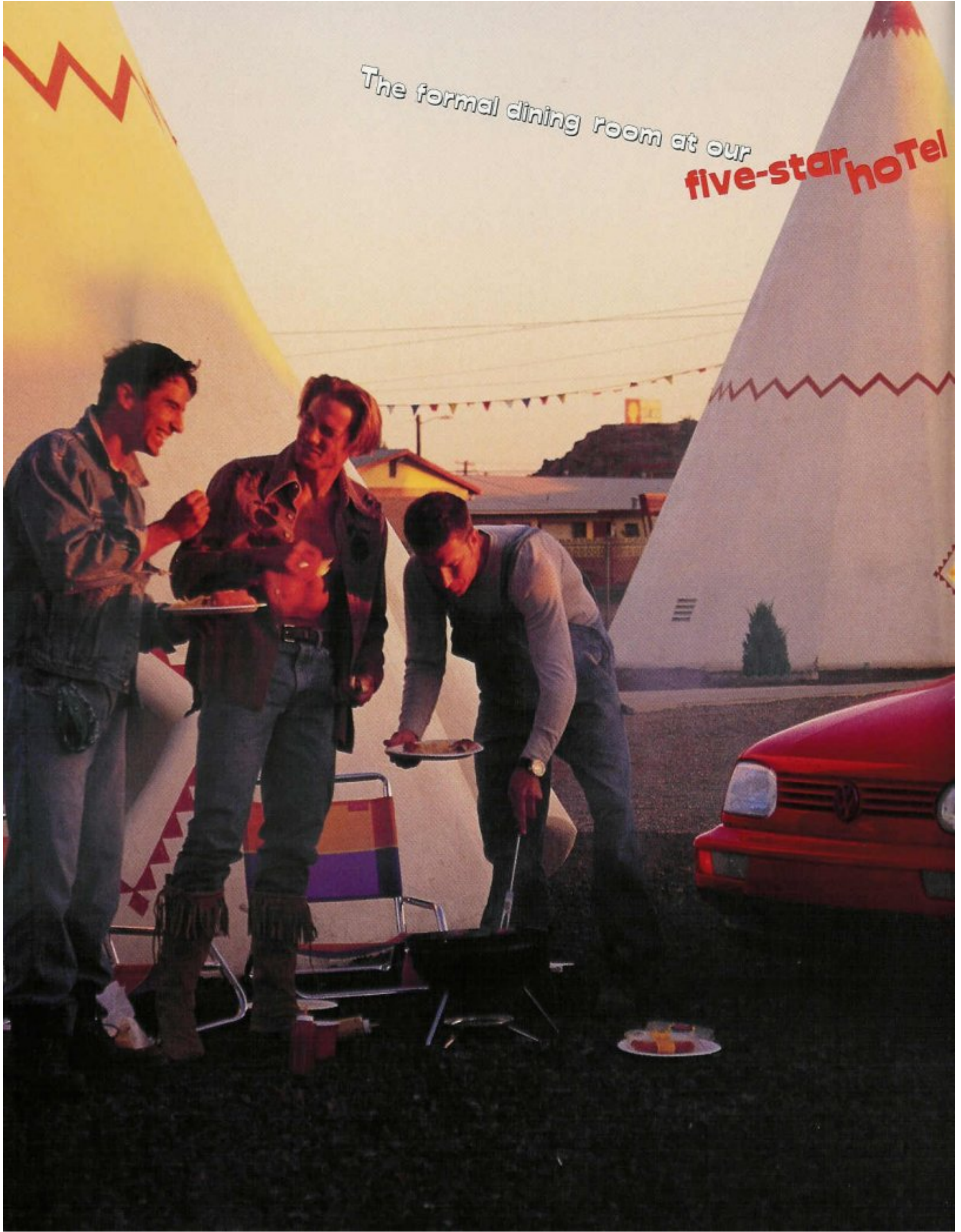
and I'd never spent the night

in a **concrete** **wig wam.**

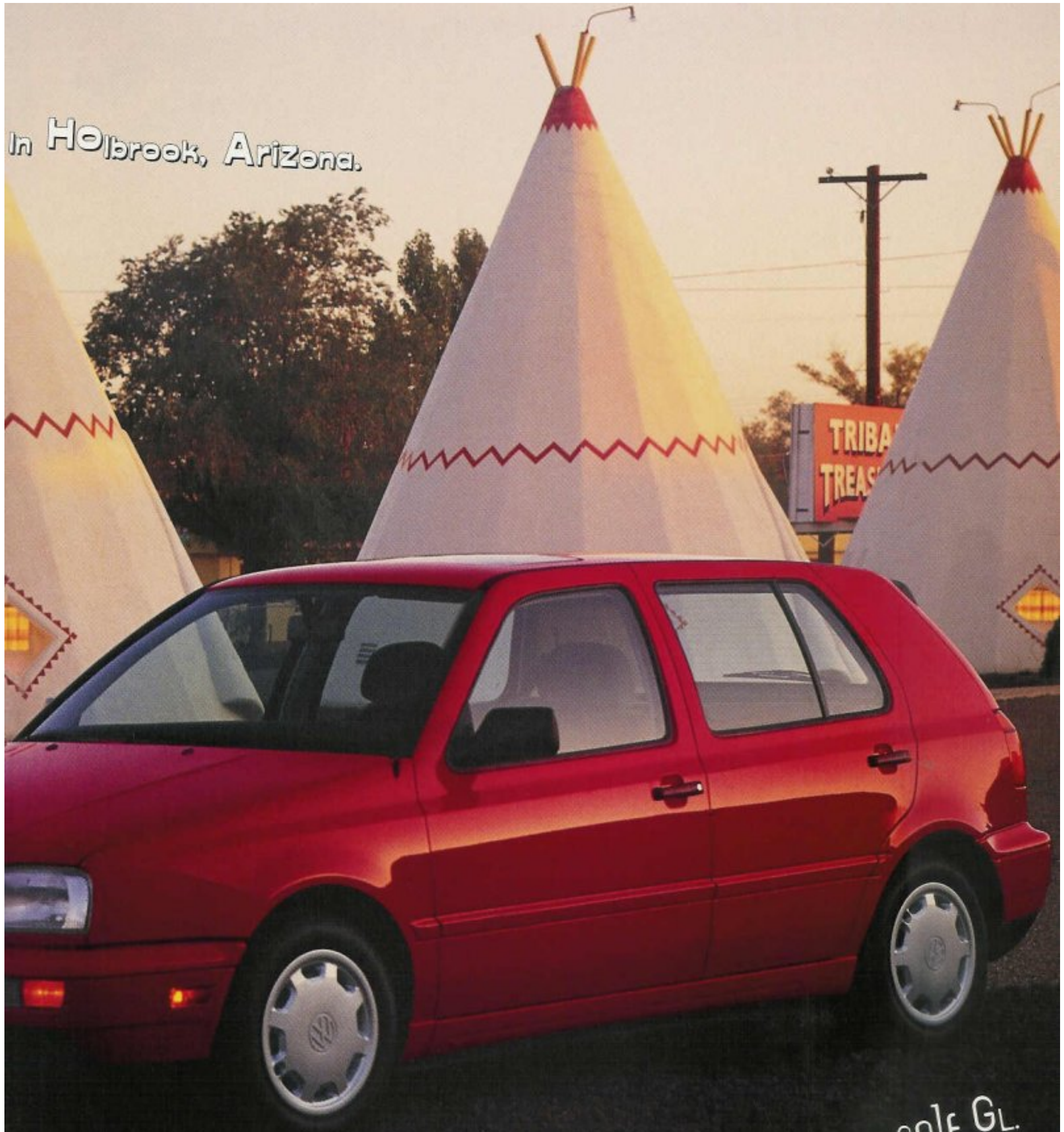
There was only **one** **do:**
thing to



The formal dining room at our
five-star hotel



In Holbrook, Arizona.



Our Highway Warrior - a **Flash Red**, four-door golf GL.

Scott goes, "Ergonomics?"

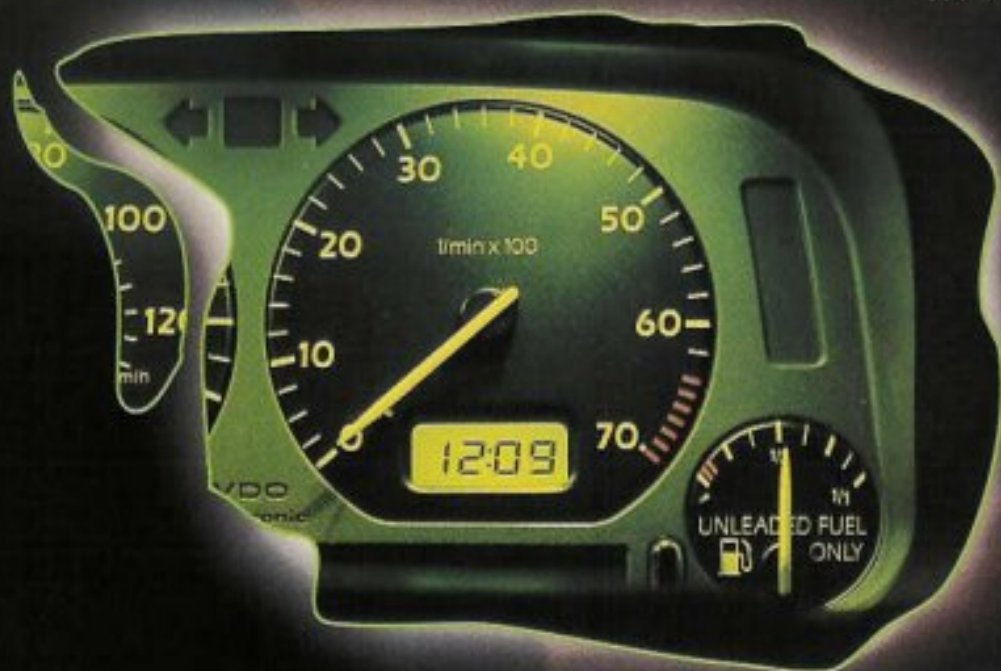
Like supply and demand?" No . . .

like car and driver, in sync.

High noon in Gallup or midnight

in Amarillo, the gauges

were eAsy on the eyes.



How **comfortable** are the seats?

Let's put it this way: Brad slept
all the way through
Oklahoma.



Okay, I admit it -
I'm a **button pusher.**

AC, stereo...
they're all in **easy reach.**



BURGERS

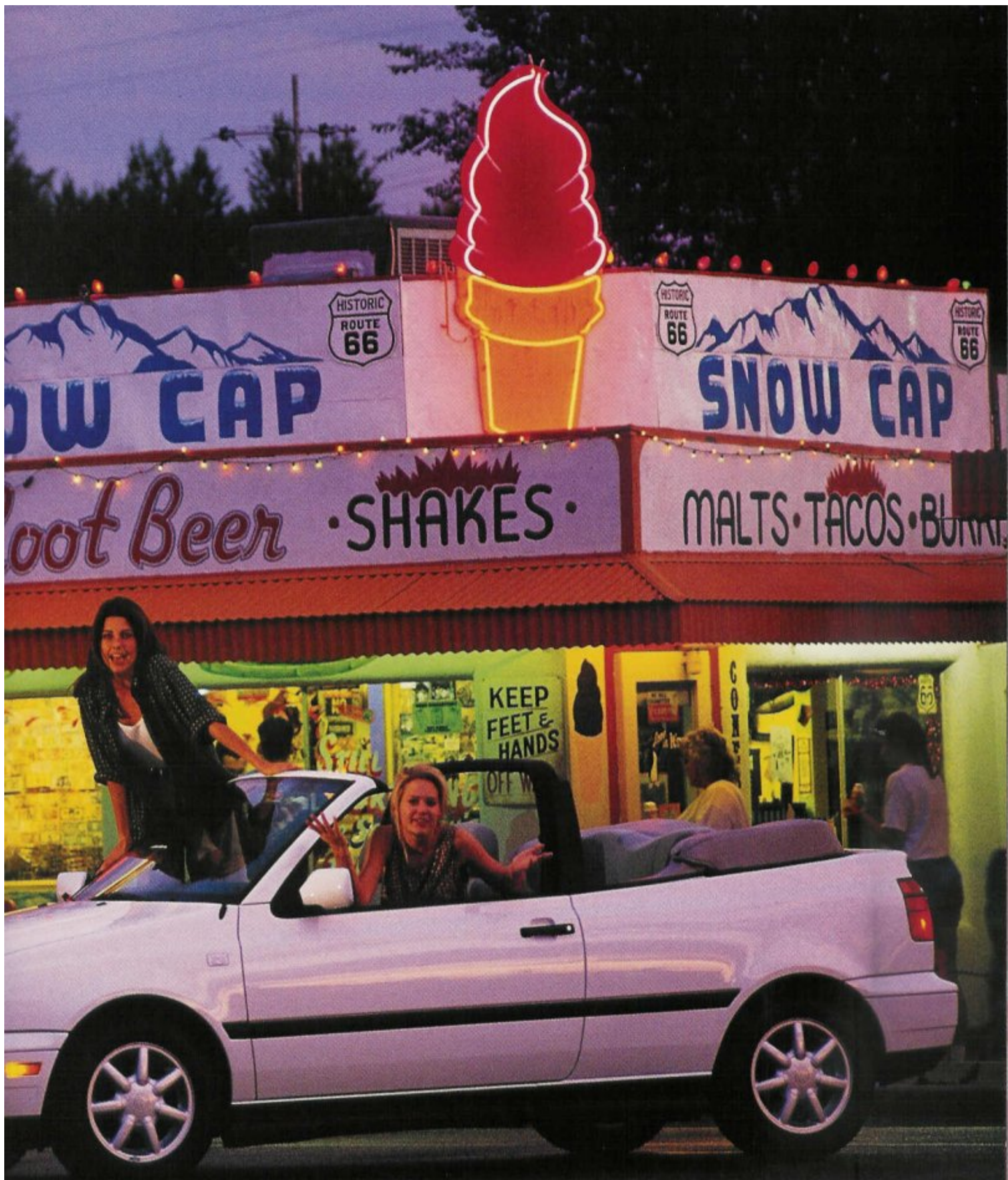
HISTORIC
ROUTE
66

SN

• MALTS • Creamy

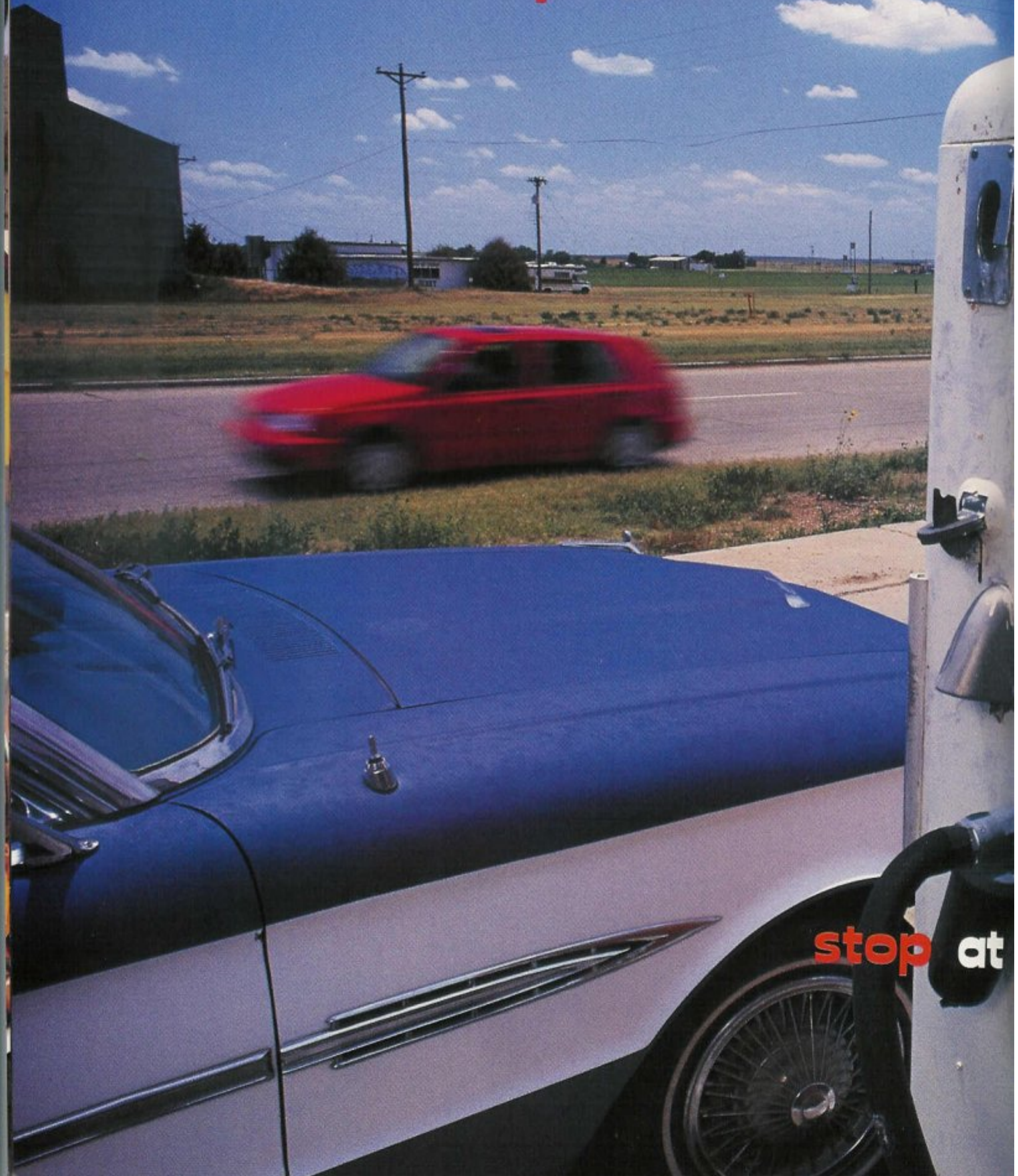
SURVIVOR





On the way to L.A. in their **CABRIO**, Christine and Danielle
treated us to burgers. Is this a **great country** or what?

We **poWered** up the



stop at

mountains in Flagstaff

as smooth as cruising the L.A. freeways, so
Scott says, "What's this thing got under the hood?"

Brad, Mr. Gearhead, says,

"German engineering, boys:

I'm talking 2.0 liters, 4 cylinders, 115 horses

and a **Metronic**® Engine ManAgement

System that adjusts for altitude

and other stuff. I'm talking an optional

four-speed automatic* that shifts

depending on the way you drive. I'm through talking -

that gas station, **I'm thirsty."**

I tell him, "We can go from Tulsa to St. Louis
on a tank, Einstein," and blow right past it.

*Not available on GTI.

**See specifications for fuel economy estimates.



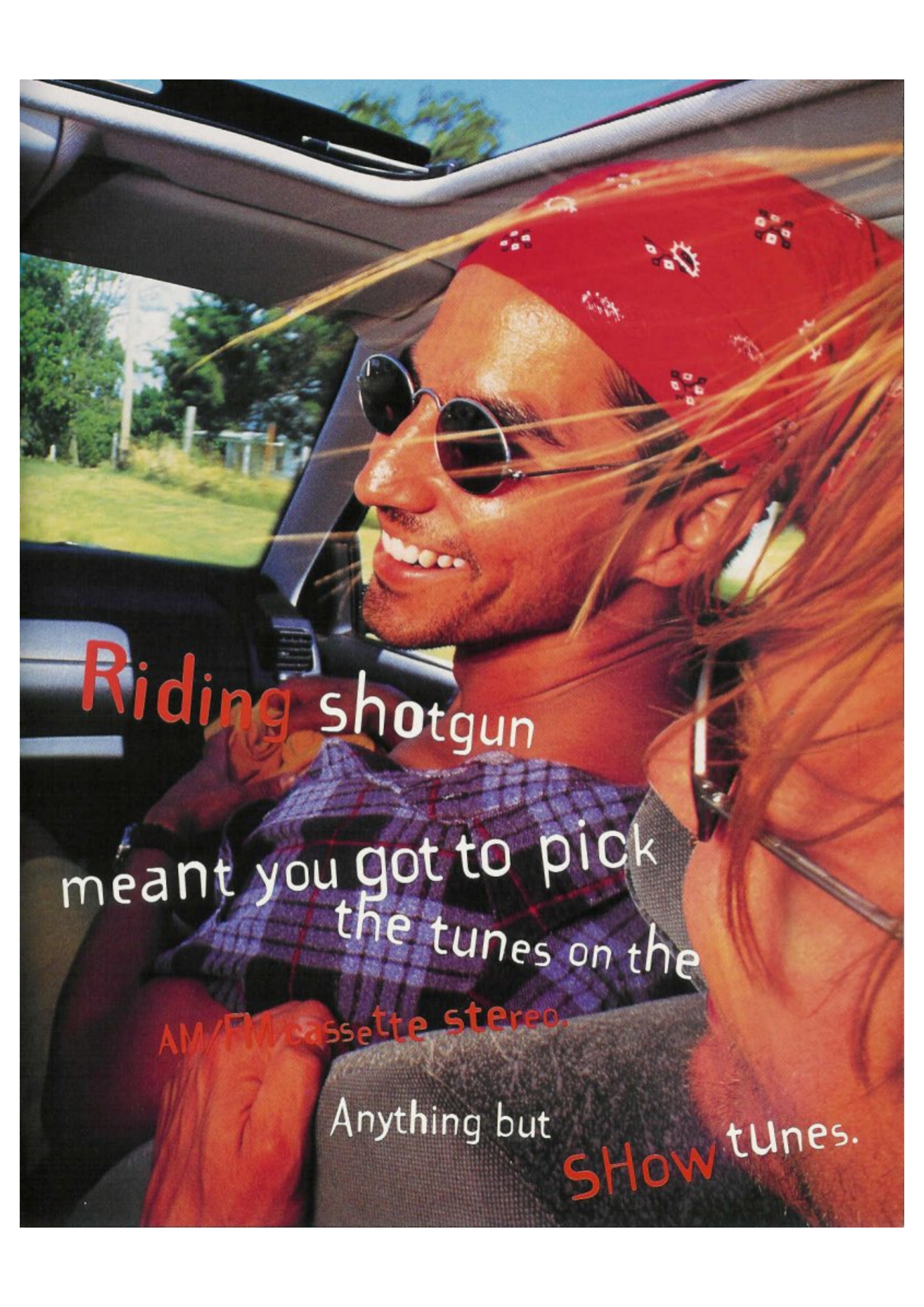
A close-up, profile view of a man with a beard and a dark cap driving a car. He is looking out the windshield at a road that curves to the right. The road has a yellow double line in the center. In the distance, a sign is visible on the right side of the road. The car's interior, including the steering wheel, dashboard, and rearview mirror, is visible. The text is overlaid on the lower part of the image.

Everything in plain sight -

the instrument panel and

important road signs, like

“Three-headed goat -
next exit.”



Riding shotgun

meant you got to pick
the tunes on the

AM/FM cassette stereo.

Anything but

SHOW tunes.

Something tells me the
armadillo crossing the
road in McLean, Texas,
was glad we had **massive**



Anti-lock Braking System*

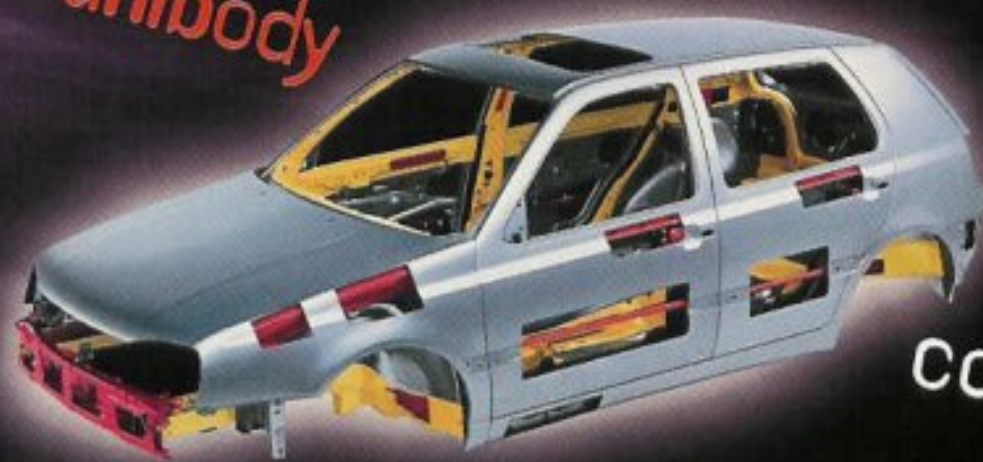


disc brakes up front
and anti-lock brakes*
besides. I guess **he**



Fixed roll bar (Cabrio)

Steel **unibody**



construction,

mash
seam welding

Power-assisted disc brakes

probably couldn't care

less that we had dual **air bags***

too, but we were glad



Dual air bag supplemental restraint system*

to have them on the

trip, just in case.

*See specifications for standard and optional equipment listings.

We **passed** a lot of **cool cars** -

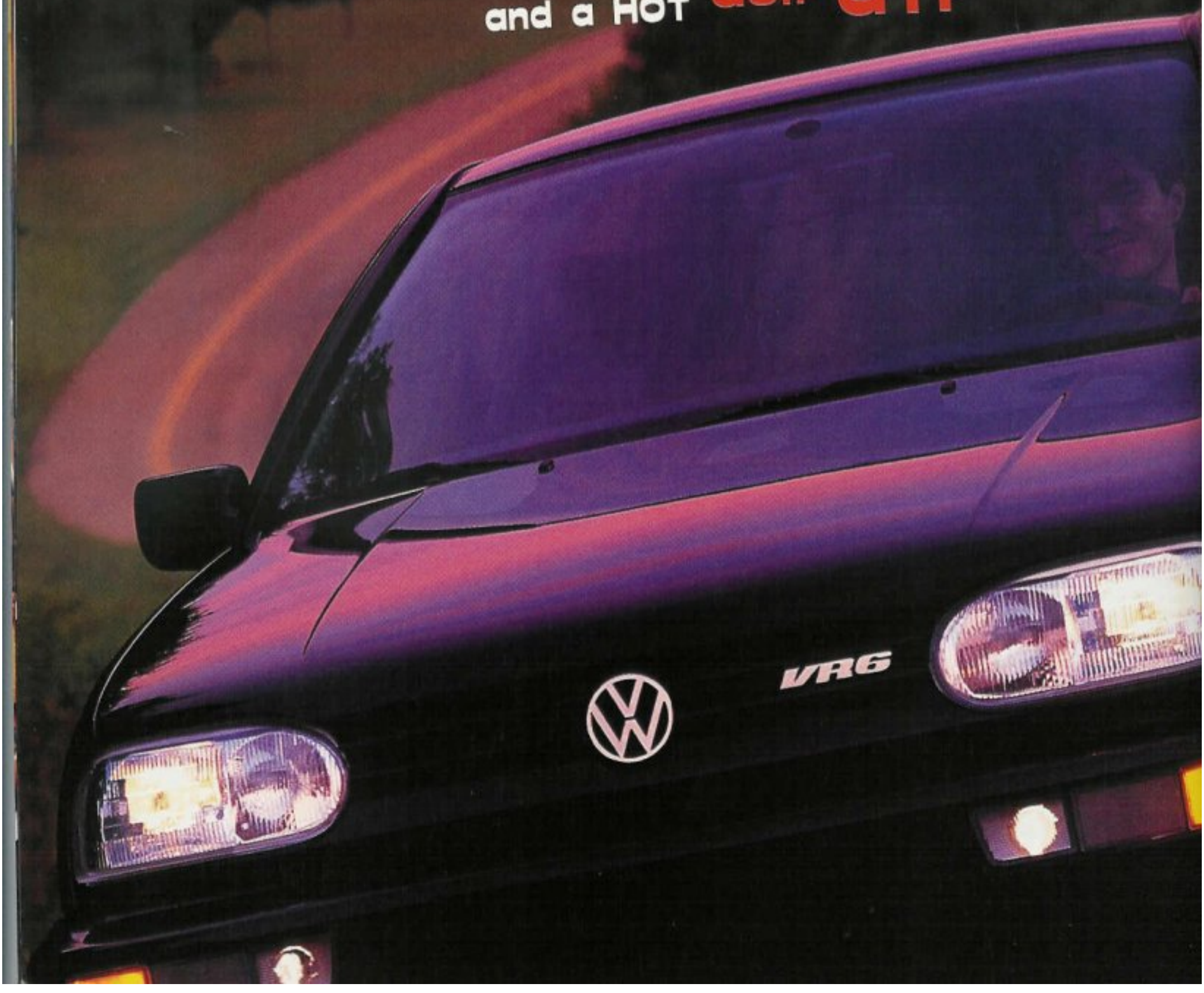
a pink Cadillac

with an **Elvis** hood ornament,

an old **woody** with

surfboards sticking out the back,

and a **HOT Golf GTI**.



The GTI's ultimate **2.8**-liter
VR6 engine



cranks out **172** horses.



Sport-tuned suspension and a
track-correcting rear axle
slam the **GTI** to the road.

The **GTI VR6** kicks

from the ground up,

with **alloy** wheels and



high-performance tires.

Volkswagen Protection Plus includes a 10-year/100,000-mile limited powertrain

warranty for original owners. The lawyers told us we had to say it that way. But get this:

No other carmaker in the world has a longer powertrain warranty. Wait...there's more.

Every VW also comes with an anti-corrosion Limited warranty that's good for

six years, no matter how many miles you go. And a two-year/24,000-mile

limited warranty

covers all defects in materials or workmanship. We're talking



bumper to bumper.* VW also pays for scheduled maintenance -

including tune-ups and oil changes - for two years or 24,000 miles. You even get

24-hour roadside assistance for two years.** Cool!

*Ask your Volkswagen dealer for limited warranty details. Tires are excluded and are warranted by their manufacturer.

**Provided by United States Auto Club, Motoring Division, Inc.

DRIVETRAIN

CONFIGURATION	GOLF TM GL, SPORT	GTI VR6	CABRIO
	Front-wheel drive	Front-wheel drive with traction control	Front-wheel drive
ENGINE			
Type:	4-cylinder in-line	6-cylinder (15° V)	4-cylinder in-line
Displacement:	2.0 liter	2.8 liter	2.0 liter
Horsepower:	115 @ 5,400 RPM (SAE net)	172 @ 5,400 RPM (SAE net)	115 @ 5,400 RPM (SAE net)
Maximum torque:	122 @ 3,200 RPM (lb.-ft.)	173 @ 4,200 RPM (lb.-ft.)	122 @ 3,200 RPM (lb.-ft.)
Valve train:	Single overhead cam, belt-driven	Two overhead cams, chain-driven	Single overhead cam, belt-driven
Fuel/air supply:	Sequential multi-port fuel injection (Motronic [®])	Sequential multi-port fuel injection (Motronic [®])	Sequential multi-port fuel injection (Motronic [®])
Ignition:	Digital electronic with knock sensor	Digital electronic with dual knock sensors	Digital electronic with knock sensor
Engine controls:	Motronic [®] electronic engine management	Motronic [®] electronic engine management	Motronic [®] electronic engine management
TRANSMISSIONS			
	Standard: 5-speed manual Optional: Electronically controlled adaptive dual-mode 4-speed automatic	Standard: 5-speed manual (sport ratio)	Standard: 5-speed manual Optional: Electronically controlled adaptive dual-mode 4-speed automatic
ELECTRICAL			
Battery:	12 volt, 63 amp hr.	12 volt, 60 amp hr.	12 volt, 63 amp hr.
Alternator:	70 amp (90 amp with air conditioning)	120 amp	70 amp (90 amp with air conditioning)
BODY, CHASSIS, SUSPENSION			
Type:	Steel, unitized construction with bolt-on front fenders	Steel, unitized construction with bolt-on front fenders	Steel, unitized construction with bolt-on front fenders
Front suspension:	Independent MacPherson struts with coil springs and 18mm stabilizer bar	Independent MacPherson struts with coil springs and 20mm stabilizer bar	Independent MacPherson struts with coil springs and 20mm stabilizer bar
Rear suspension:	Independent torsion beam axle with coil springs, telescopic shock absorbers and 20mm stabilizer bar (Sport only)	Independent torsion beam axle with coil springs, telescopic gas-pressurized shock absorbers and 21mm stabilizer bar	Independent torsion beam axle with coil springs, telescopic shock absorbers
Steering:	Power-assisted rack-and-pinion	Power-assisted rack-and-pinion	Power-assisted rack-and-pinion
Brakes:	Power-assisted 10.1" vented front discs, 7.9" rear drums (8.9" rear discs on early production and Sport models) Optional Anti-lock Braking System (ABS) for GL and Sport	Power-assisted 11" vented front discs, 8.9" rear discs Standard Anti-lock Braking System (ABS)	Power-assisted 10.1" vented front discs, 7.9" rear drums Standard Anti-lock Braking System (ABS)
Wheels and tires:	P185/60R-14H all-season steel-belted radials on 6" x 14" steel wheels (alloy wheels on Sport) P185/60R-14H all-season tires with automatic transmission and Sport models	P205/50R-15H all-season steel-belted radials on 6 1/2" x 15" alloy wheels	P185/60R-14H all-season steel-belted radials on 6" x 14" steel wheels (alloy optional)

INTERIOR DIMENSIONS

	Front		Rear		Front		Rear		Front		Rear	
Headroom:	39.2"	(996mm)	37.4"	(950mm)	37.5"	(953mm)	37.4"	(950mm)	38.7"	(983mm)	36.6"	(930mm)
Legroom:	42.3"	(1,074mm)	31.5"	(800mm)	42.3"	(1,074mm)	31.5"	(800mm)	42.3"	(1,074mm)	31.1"	(790mm)
Shoulder room: 2-door	54.0"	(1,372mm)	54.6"	(1,387mm)	54.0"	(1,374mm)	54.6"	(1,387mm)	54.1"	(1,374mm)	47.4"	(1,204mm)
4-door	53.8"	(1,367mm)	52.8"	(1,341mm)	-	-	-	-	-	-	-	-
Hip room: 2-door	52.8"	(1,341mm)	51.9"	(1,318mm)	52.8"	(1,341mm)	51.9"	(1,318mm)	52.7"	(1,339mm)	40.5"	(1,029mm)
4-door	53.2"	(1,351mm)	52.3"	(1,328mm)	-	-	-	-	-	-	-	-

INTERIOR VOLUME (EPA)

Passenger:	88 cu. ft.	87 cu. ft.	82 cu. ft.
Cargo:	17 cu. ft.	17 cu. ft.	8 cu. ft. (16 w/rear seat folded)
Total:	105 cu. ft.	104 cu. ft.	90 cu. ft.

EXTERIOR DIMENSIONS

Wheelbase:	97.3" (2,472mm)	97.3" (2,472mm)	97.2" (2,470mm)
Overall length:	160.4" (4,075mm)	160.4" (4,075mm)	160.4" (4,075mm)
Overall width:	66.7" (1,695mm)	66.7" (1,695mm)	66.7" (1,695mm)
Overall height (unladen):	56.2" (1,427mm)	56.0" (1,423mm)	56.0" (1,422mm)
Track front:	57.6" (1,464mm)	57.1" (1,450mm)	57.6" (1,464mm)
Track rear:	56.9" (1,446mm)	56.4" (1,432mm)	56.2" (1,428mm)
Turning circle (curb to curb):	32.8" ft. (10.0m)	34.2" ft. (10.41m)	32.8" ft. (10.0m)

CURB WEIGHT

Manual transmission:	2,548; 2,615; 2,549 lbs.	2,818 lbs.	2,778 lbs.
Automatic transmission:	N/A; 2,697; 2,631 lbs.	-	2,844 lbs.

1995 FUEL CONSUMPTION ESTIMATES

City/highway (EPA):	Manual 24/32 mpg	Automatic 23/29 mpg	Manual 18/25 mpg	Manual 24/31 mpg	Automatic 22/28 mpg
Maximum driving range:	446 miles	420 miles	362 miles	449 miles	406 miles

GOLF
SPECS

EXTERIOR FEATURES

S=Standard O=Optional --=Not available

		GOLF	GL	SPORT	GTI VR6	CABRIO
ALARM	Anti-theft alarm system					
ANTENNA	Roof-mounted antenna	S	S	S	S	S
GLASS	Tinted glass	-	-	S	S	-
GRILLES	Body color 2-bar grille	S	S	S	S	S
	Body color 3-bar grille	-	-	S	S	S
HEADLAMPS	Headlamps, halogen Eurostyle (daytime running light feature)	S	S	-	-	-
	Headlamps, halogen Eurostyle dual-bulb	S	S	-	-	-
MOLDINGS	Body side moldings	-	-	S	S	S
	Black rocker panel treatment	S	S	S	S	S
SPOILERS	Front and rear spoilers	-	-	S	S	S
TAILLIGHTS	Darkened taillights	S	S	S	S	S
WASHER/WIPERS	Rear window wiper/washer system	-	-	S	S	-
	Windshield wipers, 2-speed with programmable interval wipe feature	S	S	S	S	-
WHEELS	Wheel covers, deluxe	S ¹	S ¹	S ¹	S	S
	Wheels, alloy, 7-spoke	S	S	-	-	S
	Wheels, alloy, 9-spoke	-	-	S	-	O
		-	-	-	S	-

¹Delayed availability/introduction.

INTERIOR/COMFORT AND CONVENIENCE FEATURES

A/C	Air conditioning (CFC-free)	-	S	S	S	O
AIR BAGS	Dual air bags	S	S	S	S	S
ALARM	Anti-theft alarm system	S	S	S	S	S
ASSIST HANDLES	Front and rear passenger assist handles	S	S	S	S	-
BRAKES	Anti-lock Braking System	-	O	O	S	S
CONSOLE	Center console with storage bin and beverage holders	S	S	S	S	S
DEFROSTER	Electric rear window defroster	S	S	S	S	S
HATCH RELEASE	Power remote hatch release	S	S	S	S	-
INSTRUMENTS	Instrumentation, including speedometer, tachometer, trip odometer, coolant temperature gauge, fuel level gauge and digital clock	S	S	S	S	S
LIGHTING	Interior lighting	S	S	S	S	S
LOCKS	Power central locking system, including hatch and fuel-filler door and key-operated "convenience close" feature for sunroof and power windows (when so equipped)	S	S	S	S	S
LUGGAGE AREA	Carpeted luggage compartment with cover and illumination	S	S	S	S	S
MIRRORS	Day/night rearview mirror	S	S	S	S	S
	Passenger vanity mirror	S	S	S	-	-
	Dual remote-controlled mirrors	S	S	S	-	-
	Dual power mirrors, with defog feature	-	-	-	S	S
SEATS	Front bucket seats, fully reclining with driver seat height adjustment and 2-way adjustable headrests	S	S	-	-	-
	Front sport seats, fully reclining with driver seat height adjustment and 2-way adjustable headrests	-	-	S	-	S
	Front sport seats, fully reclining with driver/passenger seat height adjustment and 2-way adjustable headrests	-	-	-	S	-
	Cloth trim (different design each model)	-	-	S	S	S
	Velour trim	S	S	-	-	-
	Leather trim (seating surfaces)	-	-	-	-	O
	Split folding rear seat (60/40)	S	S	S	S	S ²
SOUND SYSTEMS	8-speaker sound system prep	S	S	S	S	S
	Deluxe AM/FM stereo cassette	-	S	-	-	-
	Premium AM/FM stereo cassette with CD changer control capabilities	-	-	S	S	S
	CD changer (6-disc)	-	-	O	O	O
STORAGE	Front door storage pockets	S	S	S	S	S
SUNROOF	Power glass sunroof	-	O	S	S	-
TRACTION	Traction control	-	-	-	S	-
WINDOWS	Power windows	-	-	-	S	S

²One-piece folding rear seat (not split).

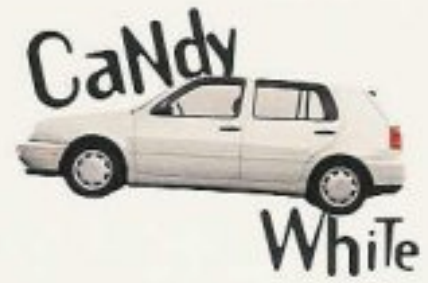
SAFETY FEATURES

Anti-lock Braking System (ABS)		-	O	O	S	S
Child safety locks on rear doors		S	S	-	-	-
Collapsible energy-absorbing steering column		S	S	S	S	S
Daytime running lights ²		S	S	S	S	S
Driver- and passenger-side air bag supplemental restraint system		S	S	S	S	S
Dual diagonal circuit braking system		S	S	S	S	S
Emergency tensioning retractors for front safety belts ²		S	S	S	S	S
5 mph bumpers (federal)		S	S	S	S	S
Polyethylene fuel cell		S	S	-	-	-
Height-adjustable front safety belts		S	S	S	S	S
Unibody reinforcements, including door sills, upper side rails and instrument panel cross-beam		S	S	S	S	S
3-point outboard rear safety belts		S	S	S	S	S

²Delayed availability/introduction.



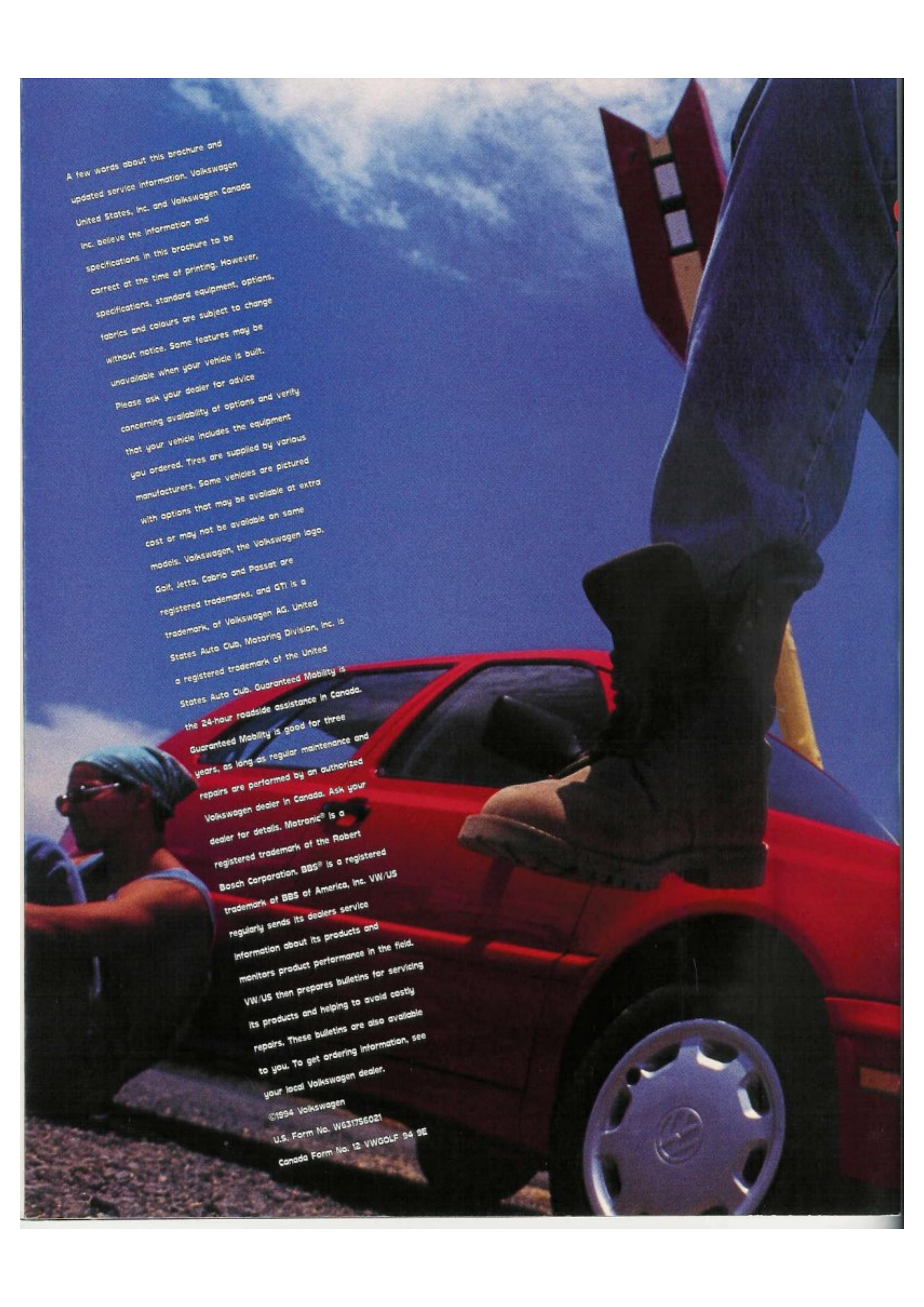
SOLID COLOURS*



METALLIC COLOURS*



*Not all colours and equipment available on all models. See your dealer for more details and a copy of the colour and trim guide.
Names of exterior colours may vary slightly between Canada and the U.S.



A few words about this brochure and updated service information. Volkswagen United States, Inc. and Volkswagen Canada Inc. believe the information and specifications in this brochure to be correct at the time of printing. However, specifications, standard equipment, options, fabrics and colours are subject to change without notice. Some features may be unavailable when your vehicle is built. Please ask your dealer for advice concerning availability of options and verify that your vehicle includes the equipment you ordered. Tires are supplied by various manufacturers. Some vehicles are pictured with options that may be available at extra cost or may not be available on some models. Volkswagen, the Volkswagen logo, Golf, Jetta, Cabrio and Passat are registered trademarks, and GTI is a trademark, of Volkswagen AG. United States Auto Club, Motoring Division, Inc. is a registered trademark of the United States Auto Club. Guaranteed Mobility is the 24-hour roadside assistance in Canada. Guaranteed Mobility is good for three years, as long as regular maintenance and repairs are performed by an authorized Volkswagen dealer in Canada. Ask your dealer for details. Motronic® is a registered trademark of the Robert Bosch Corporation. BBS® is a registered trademark of BBS of America, Inc. VW/US regularly sends its dealers service information about its products and monitors product performance in the field. VW/US then prepares bulletins for servicing its products and helping to avoid costly repairs. These bulletins are also available to you. To get ordering information, see your local Volkswagen dealer.

©1994 Volkswagen
U.S. Form No. W631756021
Canada Form No. 12 VWGOLF 94 SE