



LX

 LEXUS
EXPERIENCE AMAZING

THE LUXURY TO GO

ANYWHERE

The first LX 450 arrived at retailers in 1995. Over two decades later, the latest LX has evolved to meet the requirements of today's luxury SUV market, inheriting the impressive off-road moxie of prior generations while offering a refined on-road driving experience. The entirety of the all-new LX's mindful design and engineering aims to equip drivers with the confidence, comfort, and capability they require to accomplish their adventuring goals, giving them the ability to conquer anywhere in complete luxury.



Model shown LX 600 F SPORT.

ANYWHERE'S an OPTION



LX 500d



LX 600 | LX 600 VIP



LX 500d F SPORT | LX 600 F SPORT

The new Lexus LX is available in five class-leading models: the LX 500d, LX 500d F SPORT, LX 600, LX 600 F SPORT and LX 600 VIP. The LX 500d models are fitted with a 3.3-litre diesel engine and the LX 600 models are powered by a 3.5-litre petrol engine. Those who prefer a sportier look and feel can opt for the F SPORT grade with its unique design touches and performance features, while those who want to enjoy even more luxury can indulge in the VIP grade with comforts like its exclusive captain's chairs.

South African vehicle specifications may differ.

LEXUS DRIVING SIGNATURE

EVERYWHERE'S IN REACH

The main focus of the Lexus Driving Signature (LDS) is to craft vehicles that carry a unique human-centredness. Following over three decades of refinement, LDS offers unrivalled craftsmanship and superior comfort. The system works to enhance the drivers' on-road ease with the integration of a revised suspension layout, Adaptive Variable Suspension (AVS), Active Height Control (AHC), Electric Power Steering (EPS), and Electronically Controlled Brakes (ECB). All of these elements work together to make the driver feel more in control no matter where they choose to go.



CAPABILITY
HAS NEVER BEEN THIS

LUXURIOUS

LX 600 | LX 600 F SPORT | LX 600 VIP

Enjoy 305kW of power at 5 200rpm and 650Nm of torque at 2 000–3 600rpm in the LX 600, LX 600 F SPORT and LX 600 VIP, which all have 3.5 V6 petrol engines. These powerhouses have a top speed of 210km/h and they each feature a 10-speed automatic transmission so that you can experience the luxury of seamless transitions.

LX 500d | LX 500d F SPORT

Conquer every road in the LX 500d or the LX 500d F SPORT. Both models have a 10-speed automatic transmission and a 3.3 V6 diesel engine, offering 225kW of power at 400rpm and 700Nm of torque at 1 600–2 600rpm, reaching a top speed of 210 km/h. Now you can go from the bush to the boulevard with ease.

THE LUXURY TO GO EVER ONWARD

GA-F PLATFORM

The Lexus Global Architecture F (GA-F) is the most advanced foundation that the LX has ever known. The overall weight of the chassis has been reduced, resulting in increased driving dynamics, controllability and fuel efficiency, giving every driver the luxury to go further.

SUSPENSION

The LX offers superior on-road comfort and off-road prowess with an all-new front and rear suspension. Accompanied by Active Height Control (AHC) and Adaptive Variable Suspension (AVS), every drive in the LX feels smooth, no matter what the terrain looks like.

ACTIVE HEIGHT CONTROL

Active Height Control comes with four different height modes, including Low, Normal, High1 and High2. Drivers can choose their preference, or they can set it to automatic. With a newly developed hydraulic circuit and control, the height adjustment time has been shortened by half, giving drivers the ability to keep moving quickly and easily.





DRIVE MODE

Drivers can select from four damping force control modes: Normal, Sport, Comfort, and Mogul control. The modes vary in dampening hardness, giving the optimum settings for every driving situation and road condition.



STEERING

For the first time, the LX offers Electric Power Steering (EPS), ensuring smoother steering at all speeds. And, with an improved connection between the driver's input and the vehicle's movements, you can experience a heightened sense of control.



CRAWL CONTROL

This feature automatically adjusts engine output and hydraulic braking pressure to maintain low speeds and maximise traction on uneven or slippery road surfaces. With five vehicle speed settings and on-demand acceleration, you'll have more confidence to go anywhere.



MULTI-TERRAIN SELECT

With the option to select between six scenes – Auto, Dirt, Sand, Mud, Deep Snow, and Rock – your LX adapts to every road surface condition possible. With upgraded off-road performance in all modes, it's easier for you to take control of every adventure.

WHEREVER YOU GO, GO THERE
IN STYLE

The new LX is designed for those who don't mind standing out. Spectacular from every angle, the LX boasts a dramatically sculpted hood, eye-catching triple-beam LED headlamps, a captivating full-width Blade Tail Lamp, 20-inch wheels, a newly refined Lexus badge and a three-dimensional grille. The design of the LX has always been bold yet clean, and the same styling holds true for its fourth generation, where our craftsmen have emphasised proportions to accentuate its form and gravitas. Whether it's on- or off-road, the LX captures everyone's attention.





BOLD SPINDLE GRILLE

The floating lateral bars subtly blend to create a fresh look that stimulates a greater visual impact. This design also optimises cooling performance for those long drives to anywhere.



TRIPLE-BEAM LED HEADLAMPS

The premium headlamps feature three-projector units plus L-shaped LED lamps. They aren't only striking, they also offer impeccable visibility for any and all adventures.



REAR L-SHAPED COMBINATION-LAMP LIGHT BAR

Combining L-shaped and straight-line light designs, the rear lamps draw the eye both on- and off-road. The daring design offers optimum visibility at all times.



NEW LEXUS REAR LOGO

The Lexus logo has been redesigned to create a more modern look. This bold yet simplistic rear logo marks a new chapter in flagship design. After four generations, we're still breaking new ground.



22-INCH WHEELS

The LX comes with magnificent 22-inch wheels. The LX 600, LX 600 VIP and LX 500d are aluminium with a gloss finish.



MAKE EVERY ROUTE LUXURIOUS

Ultra-modern yet ultra-functional. Urbane yet intuitive. Each facet of the new LX is crafted to envelop users within a comfortable, multifaceted environment. For over 25 years, the LX has been an essential instrument in luxury adventuring. And now, in 2022, the new models only amplify this experience. This comprehensive evolution is guided by our commitment to *omotenashi*, unyielding anticipatory hospitality, and is driven by our drivers, for our guests. Users can comfortably depend on this advanced SUV for every journey, wherever it may take them.

Model shown LX 600.
South African vehicle specifications may differ.



MULTI-SCREEN INTERFACE

The anchor of the LX's front cabin is an all-new multi-screen interface, positioned along natural sight lines, with access to exterior camera views on the Multi-Terrain Monitor. The upper 12.3-inch, high-definition touch display puts various controls, such as navigation and the Mark Levinson® Surround Sound System, easily within reach. For enhanced theft prevention, a Lexus-first start switch with fingerprint verification is available.



REAR-SEAT ENTERTAINMENT SYSTEM*

The available dual-screen Rear-Seat Entertainment System enables two video sources to be viewed at the same time on the 11.4-inch LCD screens with headphones (wireless or wired), making every adventure more entertaining.



DIGITAL INSIDE REAR-VIEW MIRROR

The digital rear-view mirror makes it quicker, safer and easier to manoeuvre. Drivers can drive, turn, switch lanes and reverse with complete confidence, knowing that what's behind them is always in view.



SEAT HEATER, VENTILATION AND LUMBAR SUPPORT

For ultimate comfort round-trip, passengers* can enjoy lumbar support as well as internal seat heating and ventilation, giving users the ability to stay cool in summer and warm in winter.



SEAT CONFIGURATION

In the LX 600 rear passengers are enveloped in superbly cushioned seating. The second-row seat can fold up with the flip of a switch, allowing for quick and easy third-row seat accessibility. Power 50:50-split third-row seats can be reclined for added comfort when in use and folded flat into the floor when more space is needed.



WIRELESS CHARGER

A wireless charger located on the centre console enables a portable device or smartphone to be charged by simply placing it on the charging pad, eliminating the need to connect a charging cable.

*Available on select models only.

SAFETY FROM **BUSH TO BOULEVARD**

Experience complete peace of mind on every journey in the new LX with the latest Lexus Safety System+. This system leverages the best technology to ensure the well-being of everyone who steps into the LX, whether you're scaling up mountains or driving in the city.



Model shown LX 600.
South African vehicle specifications may differ.

SAFETY FEATURES



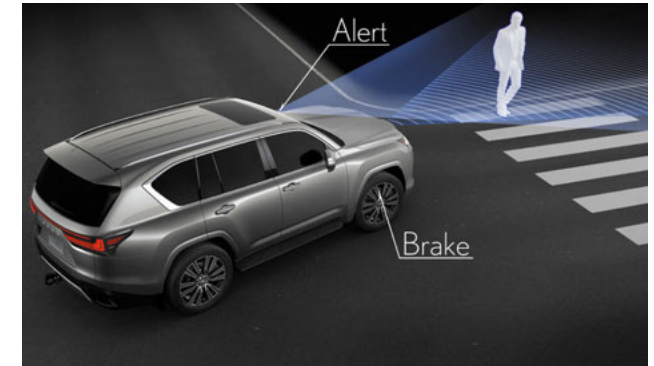
FINGERPRINT VERIFICATION

For enhanced theft prevention, the start switch in the new LX now features fingerprint verification. This advancement in safety is part of the human-centred essence of the LX line and a first in the Lexus vehicle range.



BLIND SPOT MONITOR WITH REAR CROSS TRAFFIC ALERT

Blind spots are vertically non-existent in the LX. Featuring a Blind Spot Monitor with Rear Cross Traffic Alert, it detects vehicles in adjacent lanes that are not visible on the door mirrors. If the driver is indicating to change lanes and a vehicle enters the blind spot, a warning signal appears on the relevant door mirror.



PRE-CRASH SYSTEM

The Lexus Safety System+ features an updated Pre-Crash System with an extended range single-lens camera and millimetre-wave radar. It's designed to detect daytime bicyclists and pedestrians in low-light conditions and to detect oncoming vehicles from all directions.



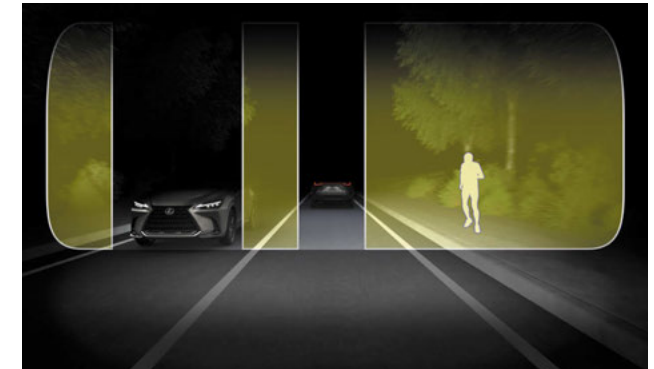
ADAPTIVE ALL-SPEED CRUISE CONTROL

The new LX features an advanced millimetre-wave radar sensor that detects vehicles in front of the vehicle, providing control and altering the LX's speed to maintain an appropriate following distance. If the car in front of the LX comes to a halt, the system will stop the vehicle. When the car moves off again, the LX will follow on at a safe distance, allowing you and your passengers to continue enjoying the journey.



LANE TRACE ASSIST

AI technology has been applied to expand the range of support provided by the lane-recognition functions of Lane Tracing Assist (LTA), which is an advanced driving support function that supports steering to keep the vehicle in the centre of the lane. Smoother and less disruptive steering makes the journey more enjoyable.



BLADESCAN™ ADAPTIVE HIGH-BEAM SYSTEM (AHS)

BladeScan™ AHS broadens the range of high-beam illumination, switching the LED lights on and off and enabling the driver to recognise pedestrians and road signs without impeding the visibility of the proceeding driver or drivers approaching from the opposite direction.

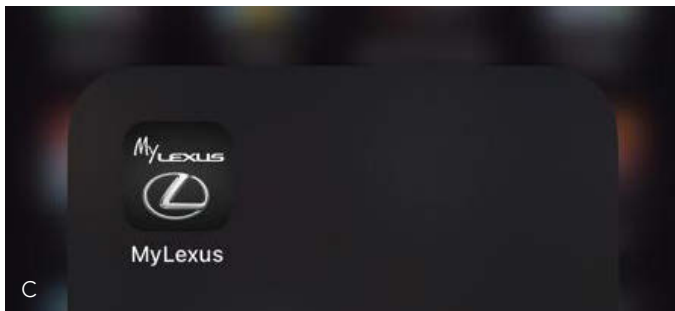
ABILITY

LIKE YOU'VE NEVER SEEN IT

Experience next-generation technology so intuitive and personal it feels like an extension of you. Designed to thrill the senses, the LX offers the pinnacle of thoughtful convenience and impeccable refinement. Ground-breaking technology is an intrinsic part of the new generation LX, making every trip more entertaining and easier to navigate.

Model shown LX 600.

South African vehicle specifications may differ.



TECHNOLOGY

A **25-SPEAKER MARK LEVINSON® SURROUND SOUND SYSTEM**

Unlock a deeper appreciation of sound and experience music in its highest fidelity with the new Mark Levinson® Reference Surround Sound system. Boasting 2 400 watts and 25 speakers meticulously positioned throughout the cabin, this bespoke system offers a three-dimensional soundscape that rivals at-home audio systems.

B **APPLE CARPLAY & ANDROID AUTO**

The all-new Lexus interface wirelessly integrates with Apple CarPlay for iPhone or Android Auto. This allows users to personalise their multimedia experience easily, whether it's a short drive or a long trip.

C **MYLEXUS APP**

The MyLexus App gives drivers the luxury of control and opens up a new level of personalisation. With in-car Wi-Fi, roadside assistance and more, drivers can customise every outing all from their phone.

D **MULTI-TERRAIN MONITOR**

When driving off-road, the 12.3-inch screen Multi-Terrain Monitor utilises four cameras – at the front, rear, and both sides – to help guide drivers. The cameras allow for the detailed checking of blind spots and path conditions. When reversing, the monitor displays the area beneath the rear of the vehicle. Called the Back Underfloor View, it's world-first technology that assists you when road surfaces get tricky.

THE LAP OF LUXURY

THE FIRST-EVER
LX F SPORT PAIRS
PROVOCATIVE STYLE
WITH EXHILARATING
HANDLING.

Inside, bolstered F SPORT seats and race-inspired details can be found throughout. Outside, striking front and rear fascia designs are punctuated by exclusive head-turning 22-inch forged F SPORT wheels. With the option of two fully-capable powertrains, either petrol or diesel, you can take a lap of any terrain in complete luxury.



EXCLUSIVE BLACK MESH GRILLE

An exclusive black mesh grille takes the signature F SPORT grille design even further by enhancing cooling performance and making a bold statement wherever you go.



F SPORT EMBOSSED ELEMENTS

The seats, steering wheel and scuff plates of the LX F SPORT are embossed with the exclusive F SPORT logo. Sink into the luxurious seats which are made of genuine dimpled leather, while you take on any adventure.



F SPORT ORNAMENTATION

The ornamentation and pedals of the LX F SPORT feature *Hadori* aluminium trim. The *Hadori* aluminium is inspired by a Japanese sword's temper pattern, evoking sportiness and honed craftsmanship.



F SPORT UNIQUE METERS

Ahead of the driver, the meter display is finished with satin-plated pieces and all-red illumination. These meters give an opulent edge to an already luxurious cabin.



Model shown LX 600 F SPORT. Images shown for illustrative purposes.

DRIVEN BY ENJOYMENT

VIP GRADE

The LX VIP is the epitome of world-class luxury. It's comfort that could only come by looking somewhere outside of the world itself. Using NASA research on neutral body posture in certain zero-G applications, Lexus crafted the reclining captain's chairs and ottoman to position and hold passengers in their natural, relaxed state. In this exclusive LX grade, you get the VIP experience wherever you go.



Model shown LX 600 VIP.
South African vehicle specifications may differ.



A 48-DEGREE RECLINING REAR SEATS

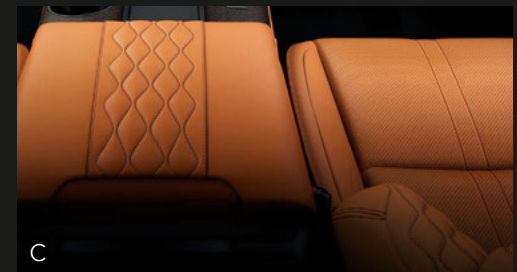
Feel at home in the LX VIP with comfortable rear seats that recline to a maximum of 48 degrees at the click of a button. With additional foldable footrests, passengers always feel like guests.

B OTTOMAN SEATS AND EXCLUSIVE HEADRESTS

Beyond its uniquely contoured headrests, the seatbacks have specially engineered cushions to absorb vibrations while providing support uniquely optimised for each part of the body. Intuitive technology embodies the ultimate in gracious hospitality, with a digital control panel that lets you personalise your seating position and then memorises your preferences.

C QUILTED FRONT SEATS

Exclusive quilting on the front seats also feature on the larger headrests. The front passenger seat features an extra front slide mode to increase the space for the rear seat.



| Engine and Drivetrain | Lexus LX 500d | Lexus LX 600 | Lexus LX 600 F SPORT | Lexus LX 500d F SPORT | Lexus LX 600 VIP |
|-------------------------------------|--|--|--|--|--|
| Adaptive Variable Suspension (AVS) | . | . | . | . | . |
| Driven Wheels | AWD | AWD | AWD | AWD | AWD |
| Fuel System | Diesel | Petrol | Petrol | Diesel | Petrol |
| Maximum Power (kW @ r/min) | 225@4000 | 305@5200 | 305@5200 | 225@4000 | 305@5200 |
| Maximum Torque (Nm @ r/min) | 700@1600-2600 | 650@2000-3600 | 650@2000-3600 | 700@1600-2600 | 650@2000-3600 |
| Number of Cylinders and Arrangement | V-Type-6 | V-Type-6 | V-Type-6 | V-Type-6 | V-Type-6 |
| Starting System | Push Start + Fingerprint | Push Start + Fingerprint | Push Start + Fingerprint | Push Start + Fingerprint | Push Start + Fingerprint |
| Suspension (Rear) | Multilink With Active Height Control | Multilink With Active Height Control | Multilink With Active Height Control | Multilink With Active Height Control | Multilink With Active Height Control |
| Transmission | Automatic - 10-Speed | Automatic - 10-Speed | Automatic - 10-Speed | Automatic - 10-Speed | Automatic - 10-Speed |
| Turbocharger | . | . | . | . | . |
| Suspension (Front) | Double Wishbone With Active Height Control | Double Wishbone With Active Height Control | Double Wishbone With Active Height Control | Double Wishbone With Active Height Control | Double Wishbone With Active Height Control |
| Paddle Shift | . | . | . | . | . |
| Engine Capacity (Litre) | 3.3 | 3.5 | 3.5 | 3.3 | 3.5 |
| Exterior Features | | | | | |
| Daytime Running Light | LED | LED | LED | LED | LED |
| Door Outside Handles | Chrome Smart Entry | Chrome Smart Entry | Chrome Smart Entry | Chrome Smart Entry | Chrome Smart Entry |
| Front Bumper | Colour Coded | Colour Coded | F SPORT | F SPORT | Colour Coded |
| Headlights | LED - Adaptive High-Beam System (AHS) | LED - Adaptive High-Beam System (AHS) | LED - Adaptive High-Beam System (AHS) | LED - Adaptive High-Beam System (AHS) | LED - Adaptive High-Beam System (AHS) |
| Headlamps Cleaner | . | . | . | . | . |
| Headlamp Levelling | Dynamic | Dynamic | Dynamic | Dynamic | Dynamic |
| Light Control System | Auto Light Control System | Auto Light Control System | Auto Light Control System | Auto Light Control System | Auto Light Control System |
| Luggage Boot/Rear Door | Power and Hands-Free | Power and Hands-Free | Power and Hands-Free | Power and Hands-Free | Power and Hands-Free |
| Side Mirrors | Colour Coded, Power, Retractable, Electrochromatic, Illuminated, With Indicator, Blind Spot Monitor (BSM), Heated, Camera, Reverse-Linked Tilt | Colour Coded, Power, Retractable, Electrochromatic, Illuminated, With Indicator, Blind Spot Monitor (BSM), Heated, Camera, Reverse-Linked Tilt | Colour Coded, Power, Retractable, Electrochromatic, Illuminated, With Indicator, Blind Spot Monitor (BSM), Heated, Camera, Reverse-Linked Tilt | Colour Coded, Power, Retractable, Electrochromatic, Illuminated, With Indicator, Blind Spot Monitor (BSM), Heated, Camera, Reverse-Linked Tilt | Colour Coded, Power, Retractable, Electrochromatic, Illuminated, With Indicator, Blind Spot Monitor (BSM), Heated, Camera, Reverse-Linked Tilt |
| Front Grille | Chrome | Chrome | Black, F SPORT | Black, F SPORT | Chrome |
| Rear Bumper | Colour Coded | Colour Coded | F SPORT | F SPORT | Colour Coded |
| Rear Lights | LED | LED | LED | LED | LED |
| Rear Fog Lamp | . | . | . | . | . |
| Tow Hook | 2 | 2 | 2 | 2 | 2 |
| Front Side Glass | Green, Acoustic | Green, Acoustic | Green, Acoustic | Green, Acoustic | Green, Acoustic |
| Rear Side Glass | Privacy, Acoustic | Privacy, Acoustic | Privacy, Acoustic | Privacy, Acoustic | Privacy, Acoustic |
| Front Window Wiper | Intermittent, Auto, Rain-sensing | Intermittent, Auto, Rain-sensing | Intermittent, Auto, Rain-sensing | Intermittent, Auto, Rain-sensing | Intermittent, Auto, Rain-sensing |
| Rear Window Wiper | Intermittent | Intermittent | Intermittent | Intermittent | Intermittent |
| Cornering Lamp | . | . | . | . | . |
| Interior Features | | | | | |
| Clock | Digital | Digital | Digital | Digital | Digital |
| Cool Box | . | . | . | . | . |
| Cupholders | 8 | 8 | 8 | 8 | 8 |
| Door Inside Handles | Chrome | Chrome | Chrome | Chrome | Chrome |
| Door Scuff Plate | Stainless Steel With Illumination | Stainless Steel With Illumination | F SPORT With Illumination | F SPORT With Illumination | Stainless Steel With Illumination |
| Door Trim | Wood | Wood | Aluminium | Aluminium | Wood |
| Floor Carpet Trim | Carpet | Carpet | Carpet | Carpet | Carpet |
| Front Headrest | Adjustable | Adjustable | Integrated | Integrated | Adjustable |
| Rear-View Mirror | Digital | Digital | Digital | Digital | Digital |

| Interior Features | Lexus LX 500d | Lexus LX 600 | Lexus LX 600 F SPORT | Lexus LX 500d F SPORT | Lexus LX 600 VIP |
|---|---|---|---|---|---|
| Key Reminder Warning | . | . | . | . | . |
| Rear Headrests | Adjustable | Adjustable | Integrated | Integrated | Adjustable |
| 2nd-Row Seats | 40:20:40 - Power Tumble | 40:20:40 - Power Tumble | 40:20:40 | 40:20:40 | Captain's Chairs - Power |
| 3rd-Row Seats | | Fold-Down Auto Arrange | | | |
| Seat Trim | Semi-Aniline Leather | Semi-Aniline Leather | Semi-Aniline Leather | Semi-Aniline Leather | Semi-Aniline Leather |
| Shift Lever & Knob | Leather | Leather | F SPORT | F SPORT | Leather |
| Speedometer | Digital | Digital | Digital | Digital | Digital |
| Steering Wheel | 3 Spoke/Leather + Wood + Heated | 3 Spoke/Leather + Wood + Heated | 3 Spoke/Leather + Heated | 3 Spoke/Leather + Heated | 3 Spoke/Leather + Wood + Heated |
| Front Personal Lamp | LED | LED | LED | LED | LED |
| Rear Personal Lamp | LED | LED | LED | LED | LED |
| Safety | | | | | |
| Anti-Theft System | Siren/Alarm, Immobiliser, Intrusion Sensor, Fingerprint | Siren/Alarm, Immobiliser, Intrusion Sensor, Fingerprint | Siren/Alarm, Immobiliser, Intrusion Sensor, Fingerprint | Siren/Alarm, Immobiliser, Intrusion Sensor, Fingerprint | Siren/Alarm, Immobiliser, Intrusion Sensor, Fingerprint |
| Auto Door Lock | Speed Dependent | Speed Dependent | Speed Dependent | Speed Dependent | Speed Dependent |
| Child Lock | . | . | . | . | . |
| Child Restraint System (ISOFIX) | 2 | 2 | 2 | 2 | 2 |
| Emergency Brake Signal | . | . | . | . | . |
| Parking Brake | Electric | Electric | Electric | Electric | Electric |
| Front Brake | Ventilated Disc | Ventilated Disc | Ventilated Disc | Ventilated Disc | Ventilated Disc |
| Front Seat Belts | ELR, Pretensioner, Force Limiter, Tension Reducer | ELR, Pretensioner, Force Limiter, Tension Reducer | ELR, Pretensioner, Force Limiter, Tension Reducer | ELR, Pretensioner, Force Limiter, Tension Reducer | ELR, Pretensioner, Force Limiter, Tension Reducer |
| Power Door Lock | . | . | . | . | . |
| Pre-Crash System (Brake Synchronised) | . | . | . | . | . |
| Rear Brake | Ventilated Disc | Ventilated Disc | Ventilated Disc | Ventilated Disc | Ventilated Disc |
| Rear Seat Belts | ELR, Pretensioner | ELR, Pretensioner | ELR, Pretensioner | ELR, Pretensioner | ELR, Pretensioner |
| Seat Belt Warning | Front + Rear | Front + Rear | Front + Rear | Front + Rear | Front + Rear |
| Spare Wheel Anti-Theft Lock | . | . | . | . | . |
| Wireless Door Lock | Smart Entry | Smart Entry | Smart Entry | Smart Entry | Smart Entry |
| Airbags | Side, Curtain, Driver, Passenger, Driver Knee, Passenger Knee | Side, Curtain, Driver, Passenger, Driver Knee, Passenger Knee | Side, Curtain, Driver, Passenger, Driver Knee, Passenger Knee | Side, Curtain, Driver, Passenger, Driver Knee, Passenger Knee | Side, Curtain, Driver, Passenger, Driver Knee, Rear Cushion, Passenger Knee |
| Driver Support Systems | | | | | |
| Tyre Pressure Monitor | . | . | . | . | . |
| Park Distance Control | Front + Rear, Intelligent Clearance Sonar, Rear Cross Traffic Alert + Braking | Front + Rear, Intelligent Clearance Sonar, Rear Cross Traffic Alert + Braking | Front + Rear, Intelligent Clearance Sonar, Rear Cross Traffic Alert + Braking | Front + Rear, Intelligent Clearance Sonar, Rear Cross Traffic Alert + Braking | Front + Rear, Intelligent Clearance Sonar, Rear Cross Traffic Alert + Braking |
| Anti-Lock Braking System (ABS) | . | . | . | . | . |
| Blind Spot Monitor (BSM) | With Rear Cross Traffic Alert | With Rear Cross Traffic Alert | With Rear Cross Traffic Alert | With Rear Cross Traffic Alert | With Rear Cross Traffic Alert |
| Brake Assist (BA) | . | . | . | . | . |
| Electronic Brake Force Distribution (EBD) | . | . | . | . | . |
| Hill Assist Control (HAC) | . | . | . | . | . |
| Multi-Terrain Select (MTS) | . | . | . | . | . |
| Traction Control (TRC) | Active Traction Control (A-TRC) | Active Traction Control (A-TRC) | Active Traction Control (A-TRC) | Active Traction Control (A-TRC) | Active Traction Control (A-TRC) |
| Vehicle Stability Control (VSC) | . | . | . | . | . |
| Trailer Sway Control (TSC) | . | . | . | . | . |
| Drive Mode Select | Eco, Normal, Sport, Sport S+, Comfort, Custom | Eco, Normal, Sport, Sport S+, Comfort, Custom | Eco, Normal, Sport, Sport S+, Comfort, Custom | Eco, Normal, Sport, Sport S+, Comfort, Custom | Eco, Normal, Sport, Sport S+, Comfort, Custom |
| Downhill Assist Control (DAC) | . | . | . | . | . |
| Lane Keeping System | Lane Trace Assist | Lane Trace Assist | Lane Trace Assist | Lane Trace Assist | Lane Trace Assist |

| Driver Support Systems | Lexus LX 500d | Lexus LX 600 | Lexus LX 600 F SPORT | Lexus LX 500d F SPORT | Lexus LX 600 VIP |
|---|---|---|---|---|---|
| Crawl Control | • | • | • | • | • |
| Turn Assist | • | • | • | • | • |
| Performance | | | | | |
| Top Speed (km/h) | 210 | 210 | 210 | 210 | 210 |
| Fuel Consumption (Combined Cycle) (L/100km) | 8.3 | 11.3 | 11.3 | 8.3 | 11.3 |
| CO ₂ (g/km) | 220 | 272 | 272 | 220 | 272 |
| Service and Warranty | | | | | |
| Service Interval | 12 Months/10 000km | 12 Months/10 000km | 12 Months/10 000km | 12 Months/10 000km | 12 Months/10 000km |
| Warranty | 7 Years/100 000km | 7 Years/100 000km | 7 Years/100 000km | 7 Years/100 000km | 7 Years/100 000km |
| Maintenance Plan | 7 Years/100 000km | 7 Years/100 000km | 7 Years/100 000km | 7 Years/100 000km | 7 Years/100 000km |
| Wheels and Tyres | | | | | |
| Spare Tyre | Full - 265-50R22 Aluminium + Gloss | Full - 265-50R22 Aluminium + Gloss | Full - 265-50R22 Aluminium F SPORT | Full - 265-50R22 Aluminium F SPORT | Full - 265-50R22 Aluminium |
| Spare Wheel Carrier | Underbody | Underbody | Underbody | Underbody | Underbody |
| Wheel and Tyre | F: 265-50R22 Aluminium + Gloss R: 265-50R22 Aluminium + Gloss | F: 265-50R22 Aluminium + Gloss R: 265-50R22 Aluminium + Gloss | F: 265-50R22 Aluminium F SPORT R: 265-50R22 Aluminium F SPORT | F: 265-50R22 Aluminium F SPORT R: 265-50R22 Aluminium F SPORT | F: 265-50R22 Aluminium R: 265-50R22 Aluminium |
| Styling | | | | | |
| Mud Guards | Front and Rear | Front and Rear | Front and Rear | Front and Rear | Front and Rear |
| Rear Spoiler | Roof Spoiler | Roof Spoiler | Roof Spoiler | Roof Spoiler | Roof Spoiler |
| Roof Rails | • | • | • | • | • |
| Roof | Moonroof | Moonroof | Moonroof | Moonroof | Moonroof |
| Convenience | | | | | |
| Cruise Control | Adaptive, All Speed | Adaptive, All Speed | Adaptive, All Speed | Adaptive, All Speed | Adaptive, All Speed |
| Air Conditioner | Auto 4-Zone, Air Purifier | Auto 4-Zone, Air Purifier | Auto 4-Zone, Air Purifier | Auto 4-Zone, Air Purifier | Auto 4-Zone, Air Purifier |
| Audio System | Mark Levinson®/EMV, DAB | Mark Levinson®/EMV, DAB | Mark Levinson®/EMV, DAB | Mark Levinson®/EMV, DAB | Mark Levinson®/EMV, DAB |
| Reverse Camera | EMV/Multi-Terrain Monitor, Panoramic View Monitor | EMV/Multi-Terrain Monitor, Panoramic View Monitor | EMV/Multi-Terrain Monitor, Panoramic View Monitor | EMV/Multi-Terrain Monitor, Panoramic View Monitor | EMV/Multi-Terrain Monitor, Panoramic View Monitor |
| Bluetooth | • | • | • | • | • |
| Front Seat Adjustment | Driver + Passenger - Power | Driver + Passenger - Power | Driver + Passenger - Power | Driver + Passenger - Power | Driver + Passenger - Power |
| Front Seat Reclining | Driver + Passenger - Power | Driver + Passenger - Power | Driver + Passenger - Power | Driver + Passenger - Power | Driver + Passenger - Power |
| Front Seat Vertical Adjuster | Driver + Passenger - Power | Driver + Passenger - Power | Driver + Passenger - Power | Driver + Passenger - Power | Driver + Passenger - Power |
| Head-Up Display (HUD) | • | • | • | • | • |
| Illuminated Entry | • | • | • | • | • |
| Multi-Information Display | • | • | • | • | • |
| Navigation System | Touchscreen, EMV | Touchscreen, EMV | Touchscreen, EMV | Touchscreen, EMV | Touchscreen, EMV |
| Power Socket | Front - 12V, Rear - 12V, Boot - 220V, Front USB Charging, Rear USB Charging x2 | Front - 12V, Rear - 12V, Boot - 220V, Front USB Charging, Rear USB Charging x4 | Front - 12V, Rear - 12V, Boot - 220V, Front USB Charging, Rear USB Charging x2 | Front - 12V, Rear - 12V, Boot - 220V, Front USB Charging, Rear USB Charging x2 | Front - 12V, Rear - 12V, Boot - 220V, Front USB Charging, Rear USB Charging x4 |
| Power Steering | Electric (EPS) | Electric (EPS) | Electric (EPS) | Electric (EPS) | Electric (EPS) |
| Electric Windows | All/All One Touch | All/All One Touch | All/All One Touch | All/All One Touch | All/All One Touch |
| Rear Air Conditioner | Auto/4-Zone | Auto/4-Zone | Auto/4-Zone | Auto/4-Zone | Auto/4-Zone |
| Rear Armrest | • | • | • | • | • |
| Seat Heater | Driver and Passenger Only, Rear Row 1 | Driver and Passenger Only, Rear Row 1 | Driver and Passenger Only, Rear Row 1 | Driver and Passenger Only, Rear Row 1 | Driver and Passenger Only, Rear Row 1 |
| Seat Lumbar Support | Driver 4-Way, Power - Passenger 4-Way | Driver 4-Way, Power - Passenger 4-Way | Driver 4-Way, Power - Passenger 4-Way | Driver 4-Way, Power - Passenger 4-Way | Driver 4-Way, Power |
| Seat Ventilation | Front + Rear Row 1 | Front + Rear Row 1 | Front + Rear Row 1 | Front + Rear Row 1 | Front + Rear Row 1 |
| Speakers | 25 | 25 | 25 | 25 | 25 |
| Steering Column Adjustments | Power/Tilt & Telescopic | Power/Tilt & Telescopic | Power/Tilt & Telescopic | Power/Tilt & Telescopic | Power/Tilt & Telescopic |

| Convenience | Lexus LX 500d | Lexus LX 600 | Lexus LX 600 F SPORT | Lexus LX 500d F SPORT | Lexus LX 600 VIP |
|--------------------------------------|---|---|---|---|---|
| Steering Switches | Audio, Telephone, Info Display, Voice Command, Adaptive Cruise Control, Lane Trace Assist | Audio, Telephone, Info Display, Voice Command, Adaptive Cruise Control, Lane Trace Assist | Audio, Telephone, Info Display, Voice Command, Adaptive Cruise Control, Lane Trace Assist | Audio, Telephone, Info Display, Voice Command, Adaptive Cruise Control, Lane Trace Assist | Audio, Telephone, Info Display, Voice Command, Adaptive Cruise Control, Lane Trace Assist |
| Sun Visor | Mirror With Cover, LED Lamp | Mirror With Cover, LED Lamp | Mirror With Cover, LED Lamp | Mirror With Cover, LED Lamp | Mirror With Cover, LED Lamp |
| USB | 2 | 2 | 2 | 2 | 2 |
| Door Courtesy Lamp | • | • | • | • | • |
| Rear-Seat Entertainment System (RSE) | • | • | • | • | • |
| Rear Sunshade | • | • | • | • | • |
| Wireless Charger | • | • | • | • | • |
| Lexus Connect Enabled | • | • | • | • | • |
| Wired Headsets | • | • | • | • | • |
| Dimensions and Capacities | | | | | |
| Approach Angle (°) | 21.0 | 21.0 | 21.0 | 21.0 | 21.0 |
| Departure Angle (°) | 21.7 | 21.7 | 21.7 | 21.7 | 21.7 |
| Front Overhang (mm) | 1040 | 1040 | 1035 | 1035 | 1040 |
| Front Tread (mm) | 1675 | 1675 | 1675 | 1675 | 1675 |
| Fuel Tank Size (L) | 80 | 80 | 80 | 80 | 80 |
| Gross Combination Mass (GCM) | 6750 | 6750 | 6750 | 6750 | 6750 |
| Ground Clearance (mm) | 210 | 210 | 210 | 210 | 210 |
| Gross Vehicle Mass (GVM) | 3280 | 3280 | 3280 | 3280 | 3280 |
| Height (mm) | 1895 | 1895 | 1895 | 1895 | 1895 |
| Kerb Weight (kg) | 2680 | 2680 | 2630 | 2675 | 2660 |
| Length (mm) | 5100 | 5100 | 5090 | 5090 | 5100 |
| Luggage Capacity (L) | 1109 | 174 | 1109 | 1109 | 767 |
| Rear Overhang (mm) | 1215 | 1215 | 1215 | 1215 | 1215 |
| Rear Tread (mm) | 1675 | 1675 | 1675 | 1675 | 1675 |
| Secondary Fuel Tank (L) | 30 | 30 | 30 | 30 | 30 |
| Towing Capacity - Unbraked (kg) | 750 | 750 | 750 | 750 | 750 |
| Towing Capacity - Braked (kg) | 3500 | 3500 | 3500 | 3500 | 3500 |
| Turning Circle (Tyres, m) | 6.0 | 6.0 | 6.0 | 6.0 | 6.0 |
| Wading Depth (mm) | 700 | 700 | 700 | 700 | 700 |
| Wheelbase (mm) | 2850 | 2850 | 2850 | 2850 | 2850 |
| Width (mm) | 1990 | 1990 | 1990 | 1990 | 1990 |

EXTERIOR COLOURS

SPECIFICATIONS



083 WHITE NOVA
AVAILABLE ON
LX 600 F SPORT |
LX 500d F SPORT



085 WHITE QUARTZ
AVAILABLE ON
LX 500d | LX 600 |
LX 600 VIP



1J7 SONIC TITANIUM
AVAILABLE ON
ALL MODELS



1K2* MANGANESE LUSTER
AVAILABLE ON
ALL MODELS



202* RAVEN BLACK
AVAILABLE ON
ALL MODELS

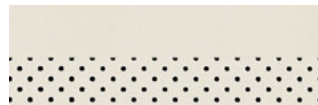


223* GRAPHITE BLACK GF
AVAILABLE ON
ALL MODELS



6X4* TERRANE KHAKI
AVAILABLE ON
ALL MODELS

INTERIOR TRIM COLOURS



WHITE
LX 500d | LX 600



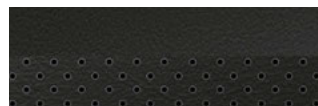
BLACK
LX 500d | LX 600



CRIMSON
LX 500d | LX 600



HAZEL
LX 500d | LX 600



F-BLACK
LX 500d F SPORT |
LX 600 F SPORT



F-FLARE RED
LX 500d F SPORT |
LX 600 F SPORT



VIP BLACK
LX 600 VIP



VIP SUN FLAIR
LX 600 VIP

*Customer order only.

EXPERIENCE ULTIMATE CONNECTIVITY WITH **MYLEXUS**

All Lexus vehicles can now be connected to the MyLexus App on your mobile phone, giving you more control of your driving experience and opening up a whole new world of personalised offerings and customisable features so that you can:



IN-CAR Wi-Fi*

Connect to Wi-Fi



GPS LOCATOR

Always know your vehicle's GPS location



LOGBOOK

Have access to a digital logbook



DRIVER NOTIFICATIONS

Important reminders like licence renewal



BATTERY HEALTH CHECK

Check your battery health



SERVICE BOOKING

Manage your services



ROADSIDE ASSISTANCE

Get real-time roadside assistance



DRIVER RATING

Receive a driver rating



FLEET MANAGEMENT

Monitor your fleet



LICENCE RENEWAL

Car licence renewal available

AND MORE

The above features are not all; there are loads of other features available to further enhance driver and guest safety, convenience and comfort, and plenty more to come to make your driving experience better and better with every kilometre.



**DOWNLOAD THE MYLEXUS APP
AND GET CONNECTED TODAY**

FIND OUT MORE AT [LEXUS.CO.ZA/MYLEXUS](https://lexus.co.za/mylexus)

*15GB Free data once-off upon activation. Ts&Cs apply. Available in South Africa only.



LEXUS MAINTENANCE

INTRODUCTION

At Lexus, we take pride in the advanced engineering and craftsmanship of the vehicles we build. For that reason, our Warranty and Distance Plans are designed to provide Lexus owners with seamless vehicle maintenance and complete peace of mind. The Lexus Warranty and Distance Plans both enjoy full support by Lexus SA and offer customers access to specialised servicing, maintenance and repair at any Lexus dealer in South Africa, Namibia and Botswana.

WARRANTY AND DISTANCE PLANS

To complement its comprehensive Warranty, the LX features a Distance Plan Complete that provides for service and maintenance costs. The option to extend the period of cover is available for both the Warranty and Distance Plan Complete. These options can be discussed with your Lexus dealer. To familiarise yourself with the cover provided by Warranty and Distance Plan on the LX, please consider the information below.

WARRANTY

- Duration: 7 Years or 100 000km from original date of sale.
- Cover: Repair or replacement of components that fail or malfunction as a result of manufacturing or material defect.

DISTANCE PLAN

The LX features a Distance Plan Complete that will incept with the vehicle's Warranty.

- Duration: 7 service intervals or up to 100 000km.

Consult with your Lexus dealer for more information on the terms and conditions of the Warranty and Distance Plan Complete offered on the LX.

MY LEXUS

MANAGE YOUR LEXUS EXPERIENCE FROM YOUR MOBILE DEVICE

With the innovative MyLexus mobile application, Lexus owners can enjoy unparalleled convenience by creating a personalised profile. MyLexus provides Lexus owners access to:

- Real-time service bookings with immediate confirmation
- Lexus Financial Services information
- Customised communication and dealer preference
- Monitoring of sales and service transactions
- Location based roadside assistance

The MyLexus application is available for Apple and Android devices. Register at www.lexus.co.za

LEXUS LIFE

Our online magazine, Lexus Life celebrates innovative design, sustainable technologies and premium experiences around the globe.

Download the app from Google Play or the App Store.

Keep up to date with all things Lexus here:

www.lexus.co.za/lexus-life 

Certain vehicle details and specifications contained in this brochure may differ from available models. Toyota Motor Corporation of Japan and Toyota SA (Pty) Ltd. make no warranties, either expressed or implied, concerning the verisimilitude of contained material. Toyota reserves the right to alter any details of specifications and equipment without notice. Waste Tyre Registration Number: TPREG003IGAU.

© 2015 Lexus South Africa* reserves the right to alter any details of specifications and equipment without notice. Details of specifications and equipment are also subject to change to suit local conditions and requirements. Please enquire at your local Lexus Authorised Dealer of any such changes that might be required for your area.



Find Lexus South Africa on:  Lexus South Africa  @Lexus_SA  lexis_southafrica
For a detailed list of specifications please visit www.lexus.co.za

PMN04W0011 Date 2022/05