



UX |  LEXUS
EXPERIENCE AMAZING



THE URBAN EDGE

Model shown UX 250h SE.
South African vehicle specifications may differ.

Introducing the Lexus UX, an Urban Crossover that dares to challenge the limits of what went before, expanding the limits of what will follow. Its bold lines prove that unmistakable strength does not come with size, that exploration can be elegant and dynamic. The result is a car with a unique presence on the road.

Embracing the Japanese architectural philosophy of *engawa*, where the exterior and interior seamlessly merge, the UX offers excellent visibility. With its compact size and excellent turning radius, it's perfectly crafted for the city.

**"OUR AIM FOR THE NEW UX
WAS NOT TO CONFORM TO THE
ESTABLISHED CROSSOVER LOOK,
BUT TO BREAK WITH CONVENTION
AND CREATE SOMETHING MORE
DISTINCTIVE AND DYNAMIC."**

UX CHIEF ENGINEER
CHIKA KAKO

PHILOSOPHY **X** INNOVATION

TAKUMI

The ancient Japanese concept of *Takumi* is essential to all that we do. Our *Takumi* master craftsmen are the guardians of this artisan philosophy, applying the subtlety of human touch to every aspect of Lexus design and development.

ENGAWA

A Japanese architectural philosophy, where the boundaries between inside and outside are seamlessly connected. *Takumi* craftsmen have infused the pioneering design of the UX with this philosophy.

SASHIKO

Sashiko quilted upholstery is just one of the countless *Takumi* touches that elevate the interior design of the Lexus UX. The *sashiko* technique is over 1 200 years old and features up to 10 stitches per inch creating stitching that is strong and secure.

WASHI PAPER

Traditional Japanese *shoji* paper is used to make Japanese sliding doors. The grain pattern of the paper – known as *washi* – is recreated in the texture of the UX's instrument panel, lending a distinctive atmosphere to the entire interior.



MODEL RANGE
UX 250h EX
UX 250h SE
UX 250h F SPORT
UX 250h F SPORT BI-TONE



The Lexus UX all-hybrid range embodies unconventional practicality and a premium driving experience with a soul for exploration. Embracing cutting-edge hybrid technology, the UX 250h EX, UX 250h SE, UX 250h F SPORT and UX 250h F SPORT Bi-Tone feature a synergy of outstanding, class-leading fuel efficiency and effortless front-wheel-drive performance. The front-wheel-drive system has a compact and lightweight transaxle and Power Control Unit, designed to minimise power losses through heat and friction.

BOLD
DESIGN



DYNAMIC
PERFORMANCE

Developed by a *Takumi* master driver for a superior driving feel, the precise handling gives effortless dynamic control, defying the normal limitations of a crossover SUV.

The UX has the lowest centre of gravity of any vehicle in its class. Important for the city, the UX's compact proportions allow for a best-in-segment 5.2 metre turning radius.

Developed in the Lexus wind tunnel, one of the most advanced of its kind, the UX engineers took a radical new approach to achieving the best possible aerodynamic performance.



EFFORTLESS PERFORMANCE

UNPLUGGED

The UX hybrid boasts a whisper-quiet drive. Accelerating up to cruising speed is as smooth as silk. The car was developed with the belief that there's more to performance than speed alone. It's about feeling truly connected to the vehicle, the road and your senses.

Powered by the fourth-generation Lexus Hybrid Drive technology, the Lexus UX 250h EX, UX 250h SE, UX 250h F SPORT and UX 250h F SPORT Bi-Tone uses only 4.5 litres of petrol per 100km, and produces absolutely no emissions in Electric Vehicle mode. Total system output from the 2.0-litre petrol engine and nickel-hydrogen battery system is 135kW. At the heart of the potent blend of petrol and electric power is the crossover's Power Control Unit (PCU), which is now 20% smaller and 10% lighter than previous Lexus systems.

An all-new, ultra-modern Self-Charge Hybrid system has been developed for the UX 250h models, featuring cutting-edge nickel-metal hydride battery technology and a sequential shiftmatic gearbox. The result is plentiful torque and effortless acceleration.

Model shown UX 250h SE.

South African vehicle specifications may differ.

ATTITUDE **X** ZEN

The car is bold, combined with a sophisticated dynamism which is utterly captivating. The surfaces are sensuous and full of life and they contrast with the strong, rugged outline and stance of the car.

Energy and personality like this cannot be created digitally. In fact, a Lexus only truly comes to life when our *Takumi* craftsmen start sculpting the clay prototype. Giving a 'soul' to industrial products is something intrinsically Japanese.

This is a crossover reimagined. The Lexus UX boasts muscular architecture featuring flared wheel arches and large wheels, while the high waistline adds an aura of safety and boldness to the profile. The design of the UX is rounded off by a signature Lexus grille and a continuous wing-shaped combination tail light, that is both instantly recognisable and an effective safety feature.

The long wheelbase of the UX delivers exceptional ride comfort as well as ample interior space. The compact overall dimensions make it a practical urban explorer, perfect for small parking spaces and tight city environments.



A AUTO HIGH-BEAM HEADLIGHTS*

The Auto High Beam System* automatically turns the high-beams on and off for the driver to provide enhanced illumination while reducing glare for oncoming drivers.

B AERO STABILISING REAR LIGHT

The continuous rear combination light on the UX has an advanced design that is not only eye-catching but also aerodynamically efficient. Fins are integrated into the light to reduce air pressure changes, contributing to excellent rear stability during cornering as well as in side winds.

C HANDS-FREE POWER TAILGATE

For convenient loading and unloading, the UX is available with a hands-free power tailgate. This can be opened and closed by moving your foot in front of a sensor located underneath the rear bumper while you are carrying the smart key.

D SPINDLE GRILLE

The UX's unique spindle grille creates a bold three-dimensional expression. Inspired by traditional Japanese etching, the grille has thousands of individual surfaces, each precisely computer calibrated to catch and reflect light.

E ROOF RAILS

Roof rails made from solid aluminium create an appealing shape that runs smoothly and seamlessly along the UX roofline.

*Available on UX 250h SE, UX 250h F SPORT and UX 250h F SPORT Bi-Tone models only.



Images shown for illustrative purposes.

HERITAGE **X** VISION

The sophisticated interior is driver focused, the centre console with a 12.3-inch display, dominates the dashboard. All driving-related information and entertainment is within close reach so that the driver isn't distracted whilst driving.

Japanese houses are designed to blur the boundary between the inside and the outside. This concept is known as *engawa*. This concept comes to life in the UX where there is a seamless connection between the inside and outside of the car. The open feeling and good sense of the extremities of the car make it much easier to manoeuvre in confined spaces.

A LEATHER SEATS*

The smooth leather* upholstery available in the UX is inspired by *sashiko*, a traditional Japanese quilting technique. The quilted leather is decorated with perforation patterns that form mathematical curves and gradations in perfect alignment, enhancing the appearance of the seats.

B DRIVER-FOCUSED COCKPIT

The UX driver has an excellent field of vision with a clear sense of the car's dimensions. From the driver's seat, the upper section of the instrument panel appears to extend out beyond the windscreen. All switches and controls are placed around or on the steering wheel for unhindered operation.

C MYLEXUS

Experience complete connectivity with the MyLexus system. It's a non-evasive device which offers in-car Wi-Fi access, notifications, roadside assist, and logbook monitoring. It links to your MyLexus App profile so that you can book services, check your finance and look through Lexus showrooms.

D STEERING WHEEL

The grip profile of the heated** leather 3-spoke steering wheel was crafted and perfected by recording the pressure on the palms of our *Takumi* master driver during numerous test drives. Integrated switches control audio, voice command, telephone, multi-information display, All-Speed* Adaptive* Cruise Control, and Lane Trace Assist*.

E FRONT SEAT ADJUSTMENT

The UX provides an ergonomic driving position that reduces fatigue and provides an excellent feeling of envelopment. Up to eight seat adjustments, including lumbar support adjustment, allows many driving positions that are suitable for a wide range of drivers.

F HEATED AND VENTILATED* SEATS

Seat heaters are available for the driver and front passenger on the UX. On hot days, taking cold air directly from the air conditioner, the unit helps cool the occupants quickly.



*Available on UX 250h SE, UX 250h F SPORT and UX 250h F SPORT Bi-Tone models only.

**Available on UX 250h SE models only.

South African vehicle specifications may differ.



The Lexus UX prioritises occupant safety with a comprehensive suite of passive and active safety features and driver support systems. ABS braking with Electronic Brake Force Distribution is standard across the range, as are Vehicle Stability Control, Vehicle Traction Control and Hill Assist Control.

LEXUS SAFETY SYSTEM+2

The UX 250h SE, UX 250h F SPORT and UX 250h F SPORT Bi-Tone come fitted with the Lexus Safety System+2 (LSS+2), a class-leading active safety and pre-crash system. Wherever you venture in the Lexus UX, it is reassuring to know that you're driving in one of the safest crossovers ever built.

CONTROL **X** SAFETY

Model shown UX 250h F SPORT.
South African vehicle specifications may differ.

LEXUS SAFETY SYSTEM +

LEXUS SAFETY SYSTEM+*

The UX comes with the Lexus Safety System+ that has been developed with the aim of further reducing road accidents. This includes:

- Pre-Crash System
- Adaptive Cruise Control
- Lane Departure Alert
- Automatic High-Beam System



ADAPTIVE*, ALL-SPEED* CRUISE CONTROL

The system uses the millimetre wave radar sensor and camera to detect the vehicle in front and provide control to maintain an appropriate distance. If the vehicle in front comes to a halt, the system will stop the UX. When the vehicle moves off again, the UX will start off and continue following.



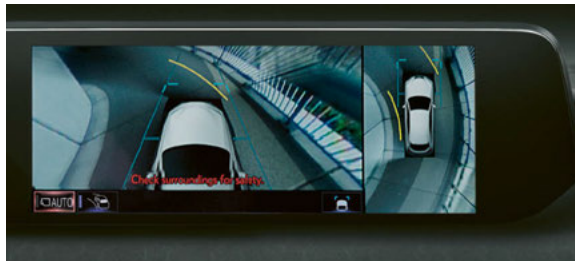
LANE TRACE ASSIST*

Lane Trace Assist with Lane Keep Assist and Steering Control helps the driver to keep the UX in the centre of the lane. If the system determines that there is a possibility of the UX departing from the lane, it will switch to departure prevention control providing support for returning the car to the centre of the lane.



BLIND SPOT MONITOR*

Radar devices mounted in the rear bumper detect vehicles in adjacent lanes that are not visible in the door mirrors. If the driver is indicating to change lane and a vehicle enters the blind spot, a warning signal appears in the relevant door mirror.



PANORAMIC VIEW MONITOR*

The Panoramic View Monitor helps you reverse into parking spaces. On the central display it shows a video image of the space into which you are reversing, and overlays guidelines to facilitate you steering the car. It provides a near-360° view around the entire car and also creates a virtual 3D picture of your UX, with on-screen guides to assist close-quarter manoeuvring in the city.



AIRBAGS

Extending its safety performance even further, the UX has a comprehensive shield of eight airbags as standard. These include driver and front passenger airbags and knee airbags, side airbags – front and rear, and curtain airbags covering all side windows.



ARTISTRY **X** TECHNOLOGY

Every Lexus comes with a wealth of imaginative technology and the UX is no exception. Blending innovation with intuitive technology, the UX consistently exceeds expectations.



A MARK LEVINSON®* AUDIO

The 13-speaker* Mark Levinson®* Premium Surround Sound system produces world-class sound. This unit's ample power allows it to drive large speakers accurately, creating clear, powerful sound. The audio system can be linked to smart devices by either Apple CarPlay or Android Auto. All of these display the screen of the smartphone on the vehicle's infotainment screen as well as linking the phone's audio output to the vehicle's speakers.

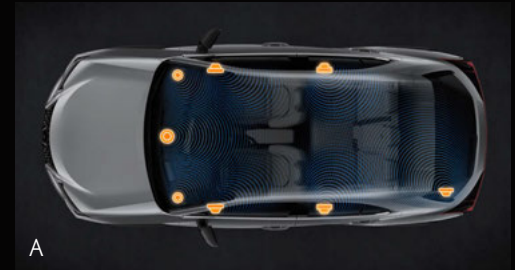
B MULTIMEDIA

The UX cockpit features Optitron instrumentation with a central TFT Multi-Information display. The large multimedia display can be operated by voice command, designed to mimic smartphone operation. Its split-screen capability allows you to simultaneously access information, such as Lexus Navigation and climate data.

WIRELESS CHARGER

C A wireless charger located on the centre console enables a portable device or smartphone to be charged by simply placing it on the charging pad, eliminating the need to connect a charging cable.

*Available on UX 250h SE, UX 250h F SPORT and UX 250h F SPORT Bi-Tone models only.





SPORTINESS **X** LUXURY

The UX's spirit of exploration is amplified in the F SPORT. With increased performance and a sportier design, the UX 250h F SPORT turns every drive into an adventure.

The sporty version of the luxury crossover offers front seats with enhanced bolstering, performance-inspired instrumentation and a daring design. It provides the ultimate urban edge by merging traditional Japanese elements with contemporary luxury.

Exclusive F SPORT exterior styling features include a more distinctive front fascia with signature upper and lower grille inserts, as well as new colour-keyed overfenders.

When driving, expect class-leading efficiency, nimble handling and the best-in-class turning radius. Experience an incredible driving experience no matter where you're going.



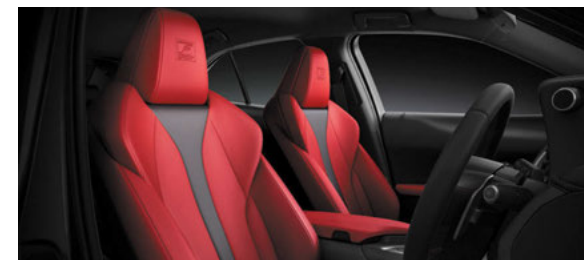
F SPORT BADGE

The F SPORT logo is a badge of distinction. The “F” refers to the birthplace and primary testing site of our high-performance F SPORT vehicles: Fuji Speedway, located near Mount Fuji.



F SPORT GRILLE

All F SPORT models come standard with an intricate and captivating grille. This enhances the cars overall sporty image, giving people a reason to stop and stare.



F SPORT SEATS

The exclusive F SPORT front seats are designed to hold the driver and passenger even during aggressive turns. The smooth leather upholstered seats offer the high-level of support and comfort that is essential in a sports car, providing confidence with every drive.



F SPORT SHIFT LEVER

Exhibiting incredible craftsmanship and exceptional comfort, the F SPORT features the unmistakable shift lever, trimmed with perforated leather. This is designed to match the premium F SPORT steering wheel, giving the cockpit of the car a sportier edge.



F SPORT STEERING WHEEL

Experience enhanced connectedness with the perforated leather F SPORT steering wheel. Paired with the unique shift lever, which is similar in design, the F SPORT cockpit emits a thrilling and sporty ambiance.



PERFORMANCE WHEELS

The exclusive 18-inch, five-spoke alloy wheels with run-flat tyres bring a sporty edge to this urban explorer. These wheels are perfect for city driving and sharp cornering.

Engine and Drivetrain	Lexus UX 250h EX	Lexus UX 250h SE	Lexus UX 250h F SPORT	Lexus UX 250h F SPORT Bi-Tone
Adaptive Variable Suspension (AVS)			•	•
Fuel System	Petrol Hybrid-EFI+D-4S	Petrol Hybrid-EFI+D-4S	Petrol Hybrid-EFI+D-4S	Petrol Hybrid-EFI+D-4S
Maximum Power (kW @ r/min)	107@6000	107@6000	107@6000	107@6000
Maximum Torque (Nm @ r/min)	188@4400–5200	188@4400–5200	188@4400–5200	188@4400–5200
Number of Cylinders and Arrangement	Inline – 4	Inline – 4	Inline – 4	Inline – 4
Starting System	Push Start	Push Start	Push Start	Push Start
Suspension (Rear)	Wishbone	Wishbone	Wishbone	Wishbone
Total System Output (kW)	135	135	135	135
Transmission	ECVT	ECVT	ECVT	ECVT
Suspension (Front)	MacPherson	MacPherson	MacPherson	MacPherson
Paddle Shift			•	•
Engine Capacity (Litre)	2.0	2.0	2.0	2.0
Exterior Features				
Daytime Running Light	LED	LED	LED	LED
Door Outside Handles	Colour Coded – Smart Entry	Colour Coded – Smart Entry	Colour Coded – Smart Entry	Colour Coded – Smart Entry
Front Bumper	Colour Coded	Colour Coded	F SPORT	F SPORT
Front Fog Lamps	LED	LED	LED	LED
Headlights	LED	LED – Auto High-Beam System	LED – Auto High-Beam System	LED – Auto High-Beam System
Headlamps Cleaner		•	•	•
Headlamp Levelling	Automatic	Automatic	Automatic	Automatic
Light Control System	Autocut	Autocut	Autocut	Autocut
Luggage Boot/Rear Door	Power and Hands-Free	Power and Hands-Free	Power and Hands-Free	Power and Hands-Free
Side Mirrors	Colour Coded, Heated, Power Retractable	Colour Coded, Auto-Retractable, Electrochromatic, Memory, Blind Spot Monitor (BSM), Heated, Reverse-Linked Tilt	Colour Coded, Auto-Retractable, Electrochromatic, Memory, Blind Spot Monitor (BSM), Heated, Reverse-Linked Tilt	Colour Coded, Auto-Retractable, Electrochromatic, Memory, Blind Spot Monitor (BSM), Heated, Reverse-Linked Tilt
Front Grille	Black	Black	F SPORT	F SPORT
Rear Bumper	Colour Coded	Colour Coded	F SPORT	F SPORT
Rear Lights	LED	LED	LED	LED
Rear Fog Lamp	LED	LED	LED	LED
Front Side Glass	UV Cut, Green, Water Repellent	Laminated, Acoustic, Water Repellent	UV Cut, Green, Water Repellent	UV Cut, Green, Water Repellent
Front Window Wiper	Auto, Rain-sensing	Auto, Rain-sensing	Auto, Rain-sensing	Auto, Rain-sensing
Rear Window Wiper	Intermittent	Intermittent	Intermittent	Intermittent
Cornering Lamp	•	•	•	•
Interior Features				
Package Trim and Tonneau Cover	•	•	•	•
Cupholders	2	2	2	2
Door Scuff Plate	Aluminium	Aluminium	Aluminium	Aluminium
Floor Carpet Trim	Carpet	Carpet	Carpet	Carpet
Front Headrest	Passive	Passive	Passive	Passive
Instrument Panel Trim	Synthetic Leather	Synthetic Leather	Synthetic Leather	Synthetic Leather
Rear-View Mirror	Day and Night	Electrochromatic (EC)	Electrochromatic (EC)	Electrochromatic (EC)
Key Reminder Warning	Buzzer	Buzzer	Buzzer	Buzzer
Meter Illumination Control	•	•	•	•
Overhead Console	•	•	•	•
2nd-Row Seats	60:40	60:40	60:40	60:40

Interior Features	Lexus UX 250h EX	Lexus UX 250h SE	Lexus UX 250h F SPORT	Lexus UX 250h F SPORT Bi-Tone
Seat Trim	Synthetic Leather	Smooth Leather	Smooth Leather	Smooth Leather
Shift Lever and Knob	Leather	Leather	Leather, F SPORT	Leather, F SPORT
Speedometer	Digital	Digital	Digital	Digital
Steering Wheel	3 Spoke/Leather	3 Spoke/Leather + Heated	3 Spoke/Leather	3 Spoke/Leather
Front Personal Lamp	LED	LED	LED	LED
Centre Console	Front	Front	Front	Front
Safety				
Airbag On-Off Switch	•	•	•	•
Anti-Theft System	Siren/Immobiliser, Intrusion Sensor, Glass Break Sensor, Tilt Sensor	Siren/Immobiliser, Intrusion Sensor, Glass Break Sensor, Tilt Sensor	Siren/Immobiliser, Intrusion Sensor, Glass Break Sensor, Tilt Sensor	Siren/Immobiliser, Intrusion Sensor, Glass Break Sensor, Tilt Sensor
Auto Door Lock	Speed Dependent	Speed Dependent	Speed Dependent	Speed Dependent
Child Lock	Rear Door	Rear Door	Rear Door	Rear Door
Child Restraint System (ISOFIX)	2	2	2	2
Emergency Brake Signal	•	•	•	•
Parking Brake	Electric	Electric	Electric	Electric
Front Brake	Ventilated Disc	Ventilated Disc	Ventilated Disc	Ventilated Disc
Front Seat Belts	Pretensioner, Force Limiter, Tension Reducer	Pretensioner, Force Limiter, Tension Reducer	Pretensioner, Force Limiter, Tension Reducer	Pretensioner, Force Limiter, Tension Reducer
Power Door Lock	Double Lock	Double Lock	Double Lock	Double Lock
Pre-Crash System (Brake Synchronised)		•	•	•
Rear Brake	Solid	Solid	Solid	Solid
Rear Seat Belts	ELR, Pretensioner, Force Limiter	ELR, Pretensioner, Force Limiter	ELR, Pretensioner, Force Limiter	ELR, Pretensioner, Force Limiter
Seat Belt Warning	Front + Rear/D: Light, D: Buzzer, P: Light, P: Buzzer	Front + Rear/D: Light, D: Buzzer, P: Light, P: Buzzer	Front + Rear/D: Light, D: Buzzer, P: Light, P: Buzzer	Front + Rear/D: Light, D: Buzzer, P: Light, P: Buzzer
Wireless Door Lock	Smart Entry	Smart Entry	Smart Entry	Smart Entry
Airbags	Side, Knee, Curtain, Driver, Passenger	Side, Knee, Curtain, Driver, Passenger	Side, Knee, Curtain, Driver, Passenger	Side, Knee, Curtain, Driver, Passenger
Rear Seat Reminder	•	•	•	•
Driver Support Systems				
Tyre Pressure Monitor	•	•	•	•
Park Distance Control	Front + Rear, Intelligent Clearance Sonar, Rear Cross Traffic Alert + Braking	Front + Rear, Intelligent Clearance Sonar, Rear Cross Traffic Alert + Braking	Front + Rear, Intelligent Clearance Sonar, Rear Cross Traffic Alert + Braking	Front + Rear, Intelligent Clearance Sonar, Rear Cross Traffic Alert + Braking
Anti-Lock Braking System (ABS)	•	•	•	•
Blind Spot Monitor (BSM)		•	•	•
Brake Assist (BA)	•	•	•	•
Electronic Brake Force Distribution (EBD)	•	•	•	•
Hill Assist Control (HAC)	•	•	•	•
Traction Control (TRC)	•	•	•	•
Vehicle Stability Control (VSC)	•	•	•	•
Drive Mode Select	Eco, Normal, Sport	Eco, Normal, Sport	Eco, Normal, Sport, Sport S+	Eco, Normal, Sport, Sport S+
Lane Keeping System		Steering Control, Lane Trace Assist	Steering Control, Lane Trace Assist	Steering Control, Lane Trace Assist
Performance				
Acceleration 0-100 (sec)	8.5	8.5	8.5	8.5
Top Speed (km/h)	177	177	177	177
Fuel Consumption (Combined Cycle) (L/100km)	4.5	4.5	4.5	4.5
CO ₂ (g/km)	103	103	103	103

Service and Warranty	Lexus UX 250h EX	Lexus UX 250h SE	Lexus UX 250h F SPORT	Lexus UX 250h F SPORT Bi-Tone
Service Interval	12 Months/15 000km	12 Months/15 000km	12 Months/15 000km	12 Months/15 000km
Warranty	7 Years/105 000km	7 Years/105 000km	7 Years/105 000km	7 Years/105 000km
Maintenance Plan	7 Years/105 000km	7 Years/105 000km	7 Years/105 000km	7 Years/105 000km
Wheels and Tyres				
Wheels and Tyres	F:225-50 R18 / R:225-50 R18	F:225-50 R18 / R:225-50 R18	F:225-50 R18 / R:225-50 R18	F:225-50 R18 / R:225-50 R18
Wheels and Tyres	Run Flat	Run Flat	Run Flat	Run Flat
Styling				
Rear Spoiler	•	•	•	•
Roof Rails	•	•	•	•
Convenience				
Cruise Control	•	Adaptive, All Speed	Adaptive, All Speed	Adaptive, All Speed
Air Conditioner	Auto Dual-Zone	Auto Dual-Zone	Auto Dual-Zone	Auto Dual-Zone
Audio System	Lexus Premium®/EMV	Mark Levinson®/EMV	Mark Levinson®/EMV	Mark Levinson®/EMV
Reverse Camera	EMV/With Guidelines	EMV/Panoramic View Monitor	EMV/Panoramic View Monitor	EMV/Panoramic View Monitor
Bluetooth	•	•	•	•
Front Armrest	•	•	•	•
Front Seat Vertical Adjuster	Driver + Passenger Power	Driver + Passenger Power/Driver Memory	Driver + Passenger Power/Driver Memory	Driver + Passenger Power/Driver Memory
Multi-Information Display	TFT	TFT	TFT	TFT
Navigation System	EMV	EMV	EMV	EMV
Power Socket	Front - 12V, Rear - 12V, Front USB Charging x2, Rear USB Charging x2	Front - 12V, Rear - 12V, Front USB Charging x2, Rear USB Charging x2	Front - 12V, Rear - 12V, Front USB Charging x2, Rear USB Charging x2	Front - 12V, Rear - 12V, Front USB Charging x2, Rear USB Charging x2
Power Steering	Electric (EPS)	Electric (EPS)	Electric (EPS)	Electric (EPS)
Electric Windows	All	All	All	All
Rear Armrest	•	•	•	•
Seat Heater	Driver and Passenger Only	Driver and Passenger Only	Driver and Passenger Only	Driver and Passenger Only
Seat Lumbar Support	Driver 2-Way, Power	Driver 2-Way, Power	Driver 2-Way, Power	Driver 2-Way, Power
Seat Ventilation		•	•	•
Speakers	10	13	13	13
Steering Column Adjustments	Power/Tilt & Telescopic	Power/Tilt & Telescopic	Power/Tilt & Telescopic	Power/Tilt & Telescopic
Steering Switches	Audio, Telephone, Cruise Control, Info Display, Voice Command	Audio, Telephone, Info Display, Voice Command, Adaptive Cruise Control, Lane Trace Assist	Audio, Telephone, Info Display, Voice Command, Adaptive Cruise Control, Lane Trace Assist	Audio, Telephone, Info Display, Voice Command, Adaptive Cruise Control, Lane Trace Assist
Sun Visor	Mirror With Cover, Ticket Holder Driver	Mirror With Cover, Ticket Holder Driver	Mirror With Cover, Ticket Holder Driver	Mirror With Cover, Ticket Holder Driver
USB	•	•	•	•
Wireless Charger	•	•	•	•
Android Auto & Apple CarPlay	•	•	•	•
Lexus Connect Enabled	•	•	•	•
Dimensions and Capacities				
Front Overhang (mm)	970	970	970	970
Front Tread (mm)	1550	1550	1550	1550
Fuel Tank Size (L)	43	43	43	43
Gross Combination Mass (GCM)	2110	2110	2110	2110
Ground Clearance (mm)	160	160	160	160
Gross Vehicle Mass (GVM)	2110	2110	2110	2110
Height (mm)	1520	1520	1520	1520
Kerb Weight (kg)	1625	1625	1625	1625

Dimensions and Capacities	Lexus UX 250h EX	Lexus UX 250h SE	Lexus UX 250h F SPORT	Lexus UX 250h F SPORT Bi-Tone
Length (mm)	4495	4495	4495	4495
Luggage Capacity (L)	268	268	268	268
Rear Overhang (mm)	885	885	885	885
Rear Tread (mm)	1550	1550	1550	1550
Turning Circle (Tyres, m)	5.2	5.2	5.2	5.2
Wheelbase (mm)	2640	2640	2640	2640
Width (mm)	1840	1840	1840	1840

EXTERIOR COLOURS



083 WHITE NOVA
UX 250h F SPORT



085 WHITE QUARTZ
UX 250h EX
UX 250h SE



1J7 SONIC TITANIUM
UX 250h EX
UX 250h SE
UX 250h F SPORT



1L1 SONIC CHROME
UX 250h EX
UX 250h SE
UX 250h F SPORT



1L2 SONIC IRIDIUM*
UX 250h EX
UX 250h SE
UX 250h F SPORT



212 BLACK*
UX 250h EX
UX 250h SE
UX 250h F SPORT



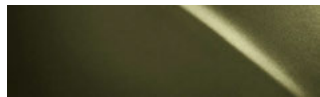
223 GRAPHITE BLACK*
UX 250h EX
UX 250h SE
UX 250h F SPORT



3T2 MADDER RED*
UX 250h EX
UX 250h SE
UX 250h F SPORT



4Y1 BLAZING CARNELIAN*
UX 250h EX
UX 250h SE
UX 250h F SPORT



6X4 TERRANE KHAKI*
UX 250h EX
UX 250h SE
UX 250h F SPORT



8X1 POSEIDON BLUE*
UX 250h F SPORT



8Y6 CELESTIAL BLUE*
UX 250h EX
UX 250h SE
UX 250h F SPORT

INTERIOR TRIM COLOURS



BLACK
UX 250h EX
UX 250h SE



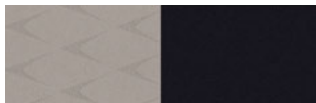
WHITE ASH
UX 250h EX
UX 250h SE



RICH CREAM
UX 250h SE



HAZEL
UX 250h EX
UX 250h SE



COBALT
UX 250h EX



WHITE
UX 250h F SPORT
UX 250h F SPORT BI-TONE



F-BLACK
UX 250h F SPORT
UX 250h F SPORT BI-TONE



FLARE RED
UX 250h F SPORT
UX 250h F SPORT BI-TONE

BI-TONE COLOURS



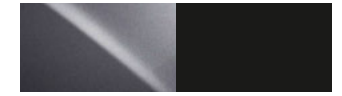
2LJ WHITE NOVA BI-TONE*
UX 250h F SPORT BI-TONE



2LN MADDER RED BI-TONE*
UX 250h F SPORT BI-TONE



2QF POSEIDON BLUE BI-TONE*
UX 250h F SPORT BI-TONE



2ZG SONIC CHROME + BLACK*
UX 250h F SPORT BI-TONE



2ZH SONIC IRIDIUM + BLACK*
UX 250h F SPORT BI-TONE



2ZJ BLAZING CARNELIAN + BLACK*
UX 250h F SPORT BI-TONE



*Customer order only.

Model shown UX 250h F SPORT Bi-Tone.
South African vehicle specifications may differ.

EXPERIENCE ULTIMATE CONNECTIVITY WITH **MYLEXUS**

All Lexus vehicles can now be connected to the MyLexus App on your mobile phone, giving you more control of your driving experience and opening up a whole new world of personalised offerings and customisable features so that you can:



IN-CAR Wi-Fi*

Connect to Wi-Fi



GPS LOCATOR

Always know your vehicle's GPS location



LOGBOOK

Have access to a digital logbook



DRIVER NOTIFICATIONS

Important reminders like licence renewal



BATTERY HEALTH CHECK

Check your battery health



SERVICE BOOKING

Manage your services



ROADSIDE ASSISTANCE

Get real-time roadside assistance



DRIVER RATING

Receive a driver rating



FLEET MANAGEMENT

Monitor your fleet



LICENCE RENEWAL

Car licence renewal available

AND MORE

The above features are not all; there are loads of other features available to further enhance driver and guest safety, convenience and comfort, and plenty more to come to make your driving experience better and better with every kilometre.



**DOWNLOAD THE MYLEXUS APP
AND GET CONNECTED TODAY**

FIND OUT MORE AT [LEXUS.CO.ZA/MYLEXUS](https://lexus.co.za/mylexus)

*15GB Free data once-off upon activation. Ts&Cs apply. Available in South Africa only.



LEXUS MAINTENANCE

INTRODUCTION

At Lexus, we take pride in the advanced engineering and craftsmanship of the vehicles we build. For that reason, our Warranty and Distance Plans are designed to provide Lexus owners with seamless vehicle maintenance and complete peace of mind. The Lexus Warranty and Distance Plans both enjoy full support by Lexus SA and offer customers access to specialised servicing, maintenance and repair at any Lexus dealer in South Africa, Namibia and Botswana.

WARRANTY AND DISTANCE PLANS

To complement its comprehensive Warranty, the Lexus UX features a Distance Plan Complete that provides for service and maintenance costs. The option to extend the period of cover is available for both the Warranty and Distance Plan Complete. These options can be discussed with your Lexus dealer. To familiarise yourself with the cover provided by Warranty and Distance Plan on the Lexus UX, please consider the information below.

WARRANTY

- Duration: 7 Years or 105 000km from original date of sale.
- Cover: Repair or replacement of components that fail or malfunction as a result of manufacturing or material defect.

DISTANCE PLAN

The Lexus UX is covered by a Distance Plan Complete full Maintenance Plan for 7 Years/105 000km. All Lexus UX vehicles are covered by a 7-Year/105 000km comprehensive manufacturer's Warranty. The UX 250h range has a Hybrid Battery Warranty of 8 Years/195 000km.

LEXUS LIFE

Our online magazine, Lexus Life celebrates innovative design, sustainable technologies and premium experiences around the globe.

Download the app from Google Play or the App Store.

Keep up to date with all things Lexus here:

www.lexus.co.za/lexus-life



Certain vehicle details and specifications contained in this brochure may differ from available models. Toyota Motor Corporation of Japan and Toyota SA (Pty) Ltd. make no warranties, either expressed or implied, concerning the verisimilitude of contained material. Toyota reserves the right to alter any details of specifications and equipment without notice. Waste Tyre Registration Number: TPREG0031GAU.

© 2015 Lexus South Africa* reserves the right to alter any details of specifications and equipment without notice. Details of specifications and equipment are also subject to change to suit local conditions and requirements. Please enquire at your local Lexus Authorised Dealer of any such changes that might be required for your area.



Find Lexus South Africa on:  Lexus South Africa  @Lexus_SA  lexis_southafrica
For a detailed list of specifications please visit www.lexus.co.za

PMN07UX003 Date 2022/09