



SHIFT_

LIVINA





CONTENTS

| | |
|---------------------------|----|
| THE URBAN ADVENTURE | 01 |
| EXPRESSIVE DESIGN | 03 |
| SPIRITED PERFORMANCE | 06 |
| THE SPACE BETWEEN | 07 |
| THE GRAND LIVINA | 10 |
| WITH SAFETY COMES FREEDOM | 11 |
| DIMENSIONS | 13 |
| COLOURS & TRIM | 14 |
| SPECIFICATIONS | 15 |



THE URBAN ADVENTURE

At some point you made a decision to live in the city. It might have been the pace, the lights... maybe it's the feeling that this is where the world is moving. Flexible, responsive and ready to take on life's next adventure, you're a Nissan LIVINA driver. This is why...

EXPRESSIVE DESIGN

The Nissan LIVINA'S attractive styling is not only pleasing to the eye, but also embraces its clever, functional design. The sleek muscular silhouette and cambered roofline sweep up to the tailgate, giving you larger windows to look out on to the world. The wheels, pushed to the ends of the body, offer a confident stance and inside, more interior space. With its exciting range of vibrant colours, the Nissan LIVINA makes a powerful statement combining contemporary styling, surefooted performance and versatile space.





SPIRITED PERFORMANCE

Whether you're running around the city or opening up on the highway, the Nissan LIVINA is as energetic as it looks.

Behind the wheel you'll experience responsive acceleration and effortless cruising. The lively 1.6 litre engine produces 80kW of power, 153Nm of torque and combines vitality with economy.

Enjoy the smooth, stable ride from the high specification suspension that minimises body roll, increases line stability on different road surfaces and enhances tractability during lane changes. This, with electric power steering, ensures control and secure handling for every situation.

THE SPACE BETWEEN

The Nissan LIVINA has a spacious, airy interior with plenty of room for people and everything you might need to take along with you.

It takes seconds to feel at home in the Nissan LIVINA. An adjustable steering column and comfortable cockpit is just the starting point. Contoured seats are tailored for your comfort in soft, high quality upholstery and the sub-ventilation air-conditioning system cools the cabin without direct airflow.

The Nissan LIVINA also has a class leading luggage area. The 60/40 split rear seats recline and fold flat to significantly extend the luggage room and accommodate bulky or longer items with ease. An effortless pull of a lever is all it takes to change to a different configuration while hooks retain the tonneau cover to hide your luggage from inquisitive eyes.

All this adds up to intelligent functionality, perfectly in tune with your changing needs.





THE GRAND LIVINA

The Nissan GRAND LIVINA takes versatility to a new level, moving fluidly and effortlessly from 5 seats to 7. The rear seats are simple to adjust for your changing needs. A single lock release strap folds or raises the rear seats for different configurations. The third row is easy to enter and has its own set of cup holders. When the third row is folded flat, the huge cargo area easily transports bulky items. It is perfectly equipped for people on the move.

The extensive use of sound absorbent materials diminish road noise and the pendulum mount engine system reduces vibration resulting in a quiet cabin.

Plenty of room. A comfortable and quiet cabin. Get used to a thoroughly rewarding interior.



WITH SAFETY COMES FREEDOM

You have a spirit of adventure and want to take on life with confidence. The advanced active and passive safety systems lets you take to the road with complete peace of mind. The protective safety system includes a strong and rigid safety cell, driver airbags and 3-point seatbelts.



Powerful halogen headlamps provide a wide arc of strong illumination to cut through darkness and bad weather and a high mounted stop lamp alerts drivers behind you of your intentions.

In emergency braking, ABS brakes will prevent the wheels from locking so you can steer around obstructions. Electronic Brake force Distribution (EBD) regulates front and rear braking pressure for maximum braking efficiency and Brake Assist (BA) senses emergency braking, reducing stopping distance (ABS, EBD and BA available only on Acenta models).

The Nissan Anti-Theft System (NATS), including central locking and immobiliser, takes care of the security requirements. All Nissan vehicles are fitted with the Nissan DataDot anti-theft identification system as standard.



Safety Shield

In the commitment to "Real World Safety", Nissan pursues innovation as part of its Safety Shield concept. Based on the idea that cars should help protect people, advanced, proactive safety technologies help driver and passengers to avoid danger and injury in a wide range of circumstances. Visit www.nissan.co.za to find out more.

DIMENSIONS

LIVINA



GRAND LIVINA



Nissan's commitment to quality

To provide all customers with a consistently high level of quality, Nissan applies the same standards worldwide, to ensure that all Nissan owners enjoy peace of mind for the lives of their vehicles. The approach is based on quality from the customer's perspective on three key elements: First, the expectation of a smooth driving experience with complete peace of mind. Second, the intangible appeal of a vehicle, its power to captivate and excite, with features that capture attention and imagination. Third, the level of attentiveness and service during the sales process, and long after the sale is concluded.

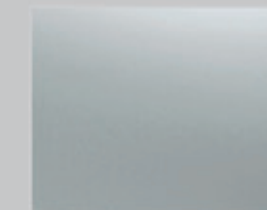


Nissan's commitment to the environment

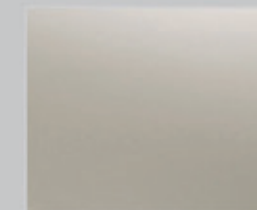
Nissan's environmental philosophy embraces people, vehicles and nature. In the pursuit of a sustainable mobile society, the Nissan Green Program aims to reduce the environmental impact of Nissan vehicles at every stage of the vehicle life cycle, while corporate activities address environmental challenges.

COLOURS

LIVINA AND GRAND LIVINA AVAILABLE IN:



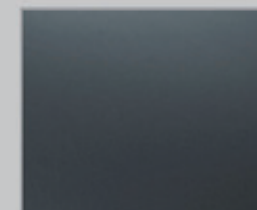
Bright Silver (M)
KY0



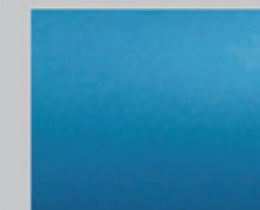
Thermal Gold (M)
K32



Arctic White (S)
QM1



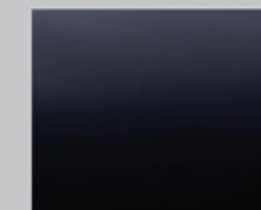
Techno Grey (M)
KY5



Starling Blue (M)
B16



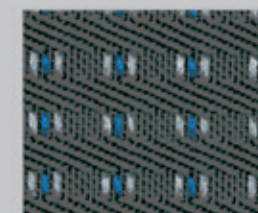
Claret Red (M)
AY4



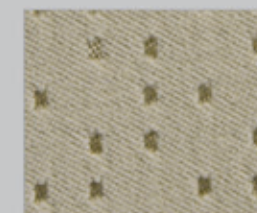
Infinite Black (M)*
KH3

Techno Grey is only available for Nissan Grand Livina and Starling Blue is only available for Nissan Livina.

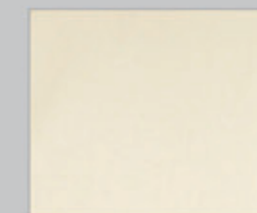
TRIM



Livina
Visia and Acenta
(Fabric)



Grand Livina
Acenta
(Fabric)



Grand Livina
Acenta+
(Leather)

* Special order

| SPECIFICATIONS AND FEATURES | | | | | |
|---|---------|------------------------------------|------------------------------------|------------------------------------|------------------------------------|
| Model | | Livina 1.6 Visia M/T | Livina 1.6 Acenta M/T | Grand Livina 1.6 Acenta M/T | Grand Livina 1.6 Acenta+ M/T |
| Body type | | 5 Door hatch | 5 Door hatch | 5 Door MPV | 5 Door MPV |
| Transmission | | 5-speed manual | 5-speed manual | 5-speed manual | 5-speed manual |
| Seating capacity | | 5 | 5 | 7 | 7 |
| ENGINE & PERFORMANCE | | | | | |
| Number of cylinders | | 4 | 4 | 4 | 4 |
| Maximum power | kW | 80 | 80 | 80 | 80 |
| Maximum torque | Nm | 153 | 153 | 153 | 153 |
| Engine displacement | cc | 1598 | 1598 | 1598 | 1598 |
| Fuel type | | Unleaded petrol | Unleaded petrol | Unleaded petrol | Unleaded petrol |
| Fuel injection | | Multi-point | Multi-point | Multi-point | Multi-point |
| CO ₂ emissions level | g/km | 165 | 165 | 168 | 168 |
| DRIVE TRAIN | | | | | |
| Gear ratio: | | | | | |
| | 1st | 3,727 | 3,727 | 3,727 | 3,727 |
| | 2nd | 2,048 | 2,048 | 2,048 | 2,048 |
| | 3rd | 1,393 | 1,393 | 1,393 | 1,393 |
| | 4th | 1,029 | 1,029 | 1,029 | 1,029 |
| | 5th | 0,821 | 0,821 | 0,821 | 0,821 |
| | Reverse | 3,545 | 3,545 | 3,545 | 3,545 |
| Final drive ratio | | 4,067 | 4,067 | 4,067 | 4,067 |
| Drive type | | 2WD | 2WD | 2WD | 2WD |
| DIMENSIONS & WEIGHTS | | | | | |
| Overall length of vehicle | mm | 4180 | 4180 | 4420 | 4420 |
| Overall width of vehicle | mm | 1690 | 1690 | 1690 | 1690 |
| Overall height of vehicle | mm | 1575 | 1575 | 1595 | 1595 |
| Wheelbase | mm | 2600 | 2600 | 2600 | 2600 |
| Towing capacity | kg | 400 | 500 | 500 | 500 |
| Fuel tank capacity | l | 52 | 52 | 52 | 52 |
| Ground clearance | mm | 177 | 177 | 178 | 178 |
| WHEELS/TYRES | | | | | |
| Wheel size/type | | 14" Steel | 14" Steel | 14" Steel | 15" Alloy |
| Wheel dimensions (front; back) | | 175/70 R14 | 175/70 R14 | 185/65 R15 | 185/65 R15 |
| Spare wheel: Spacesaver | | Standard | Standard | Standard | Standard |
| PERFORMANCE | | | | | |
| Top speed | km/h | 180 | 180 | 180 | 180 |
| Turning circle | m | 5,2 | 5,2 | 5,2 | 5,2 |
| SAFETY AND SECURITY | | | | | |
| Airbags | | Driver | Driver & Passenger | Driver & Passenger | Driver & Passenger |
| ABS | | N/A | Standard | Standard | Standard |
| Electronic Brake-force Distribution (EBD) | | N/A | Standard | Standard | Standard |
| Brake Assist (BAS) | | N/A | Standard | Standard | Standard |
| Brake type | | Ventilated front discs; rear drums | Ventilated front discs; rear drums | Ventilated front discs; rear drums | Ventilated front discs; rear drums |
| Front fog lamps | | N/A | N/A | Standard | Standard |
| High mounted stop lamp | | Standard | Standard | Standard | Standard |
| Child-proof rear door lock | | Standard | Standard | Standard | Standard |
| NATS immobiliser | | Standard | Standard | Standard | Standard |
| Nissan DataDot anti-theft identification system | | Standard | Standard | Standard | Standard |

| Model | | Livina 1.6 Visia M/T | Livina 1.6 Acenta M/T | Grand Livina 1.6 Acenta M/T | Grand Livina 1.6 Acenta+ M/T |
|---|----|-----------------------------|---|---|---|
| COMFORT & CONVENIENCE | | | | | |
| 60/40 Rear seat split | | Standard | Standard | Standard | Standard |
| Leg room 2nd row | mm | 584 | 584 | 580 | 580 |
| Leg room 3rd row | mm | N/A | N/A | 456 | 456 |
| Luggage capacity (VDA) | l | 383 | 383 | 123 (with 3rd row up) | 123 (with 3rd row up) |
| Luggage capacity (VDA)(with 2nd row down) | l | 769 | 769 | N/A | N/A |
| Luggage capacity (VDA) (with 3rd row down) | l | N/A | N/A | 589 | 589 |
| Luggage capacity (VDA)(with 2nd & 3rd row down) | l | N/A | N/A | 946 | 946 |
| Fuel flap release | | Standard | Standard | Standard | Standard |
| Central locking | | with remote | Standard | Standard | Standard |
| Electric power steering | | Standard | Standard | Standard | Standard |
| Electric windows | | Standard | Standard | Standard | Standard |
| Door mirrors | | Black; manual | Body colour; electric | Body colour; electric | Body colour; electric |
| Steering wheel: Tilt adjustment | | Standard | Standard | Standard | Standard |
| Audio system | | N/A | AM/FM Radio, Single CD player, 6 speakers | AM/FM Radio, Single CD player, 6 speakers | AM/FM Radio, Single CD player, 6 speakers |
| Air-conditioner | | Manual | Manual | Manual | Manual |
| Front wipers | | 2-speed intermittent | 2-speed intermittent | 2-speed intermittent | 2-speed intermittent |
| Rear window de-mister | | Standard | Standard | Standard | Standard |
| Interior light logic | | Standard | Standard | Standard | Standard |
| Luggage area lamp | | Standard | Standard | N/A | N/A |
| TRIMS & SEATING | | | | | |
| Dashboard | | Aluminium style | Aluminium style | Wood-look trim | Wood-look trim |
| Seat upholstery | | Cloth | Cloth | Cloth | Leather |
| DRIVER'S AREA | | | | | |
| Clock: digital | | N/A | Standard | Standard | Standard |
| Tachometer: analogue | | Standard | Standard | Standard | Standard |
| Speedometer: analogue | | Standard | Standard | Standard | Standard |
| Trip meter: digital | | Standard | Standard | Standard | Standard |
| Fuel meter | | Standard | Standard | Standard | Standard |
| Low fuel warning light | | Standard | Standard | Standard | Standard |
| Airbag check warning light | | Standard | Standard | Standard | Standard |
| ABS check warning light | | N/A | Standard | Standard | Standard |
| Engine oil pressure warning lights | | Standard | Standard | Standard | Standard |
| Door open warning | | Standard | Standard | Standard | Standard |
| Headlamp-on reminder chime | | Standard | Standard | Standard | Standard |
| SERVICE AND WARRANTY INFORMATION | | | | | |
| Service intervals | | 15000 km | 15000 km | 15000 km | 15000 km |
| Service plan | | Optional | 3 years /60 000km | 3 years /60 000km | 3 years /60 000km |
| Warranty and roadside assistance | | 3 years/100 000km | 3 years/100 000km | 3 years/100 000km | 3 years/100 000km |
| Paint and mechanical warranty | | 3 years/100 000km | 3 years/100 000km | 3 years/100 000km | 3 years/100 000km |
| Anti-corrosion warranty | | 3 year/unlimited kilometers | 3 year/unlimited kilometers | 3 year/unlimited kilometers | 3 year/unlimited kilometers |

Disclaimer: Every effort has been made to ensure that the contents of this brochure is correct at the time of going to print (October 2012). This brochure has been produced featuring prototype or accessorised vehicles exhibited at motorshows and, in accordance with the company's policy of continuously improving its products, Nissan South Africa reserves the right to change the specifications and the vehicles described and shown in this brochure at any time. Nissan dealers will be informed of any such modifications as quickly as possible. Please check with your local Nissan dealer to receive the most up-to-date information. Due to the limitations of the printing process used, the colours shown in this brochure may differ slightly from the actual colours of the paint and interior trim material used. All rights reserved. Reproduction in whole or part of this brochure without the written permission from Nissan is forbidden.

Quoted fuel consumption and emission values have been established using the prescribed method of measurement (United Nations Economic Commission for Europe "ECE" Regulation R101 in the current version) as required under current legislation. This data does not pertain to the specific vehicle and does not comprise part of the offer, but is supplied for the purpose of comparison between the various types of vehicle, in accordance with 1999/94/EC. Driving behaviour / conditions and other non-technical factors contribute towards a vehicle's fuel consumption and CO₂ emissions over and above the determined fuel efficiency of a vehicle.

Test Drive the Nissan Livina

visit our website at: www.nissan.co.za

Phone us toll free:

0800 NISSAN

0800 647 726

October 2012

BR12E-0C11A0