



MAGNITE





## THE FUTURE IS BOLD

You're on your way and you know where you're going. With its muscular lines and dynamic design, the new Nissan MAGNITE will get you there in style. There's a bold future waiting. Get in and take control.

## YOU'RE ON YOUR WAY. LOOK THE PART.

You're making your mark on the world: The new Nissan MAGNITE is your perfect match. A powerful front grille framed by LED Daytime Running Lamps and side steps signal your intentions beautifully. And that's just the start.



### FIRST-IN-SEGMENT BI-PROJECTOR LED HEADLAMPS WITH LED TURN INDICATOR

The way ahead is always crystal clear with first-in-segment Bi-Projector LED Headlamps – and with the new Nissan MAGNITE'S LED Turn Indicators, direction changes are too.

### DOMINATING FRONT GRILLE

The commanding and dynamic front chrome grille announces your arrival in confident style.

### L-SHAPED LED DAYTIME RUNNING LAMPS WITH LED FOG LAMPS

You know precisely where you're going – wherever you choose to go. L-Shaped Daytime Running Lamps (DRLs) and LED fog lamps ensure the path ahead is always effortlessly illuminated.



## ROOM TO MOVE

A best-in-class 700 mm couple seat distance, along with its generous interior space, mean every journey in the Nissan MAGNITE takes place in the comfort you deserve. And you deserve the best.

700 mm



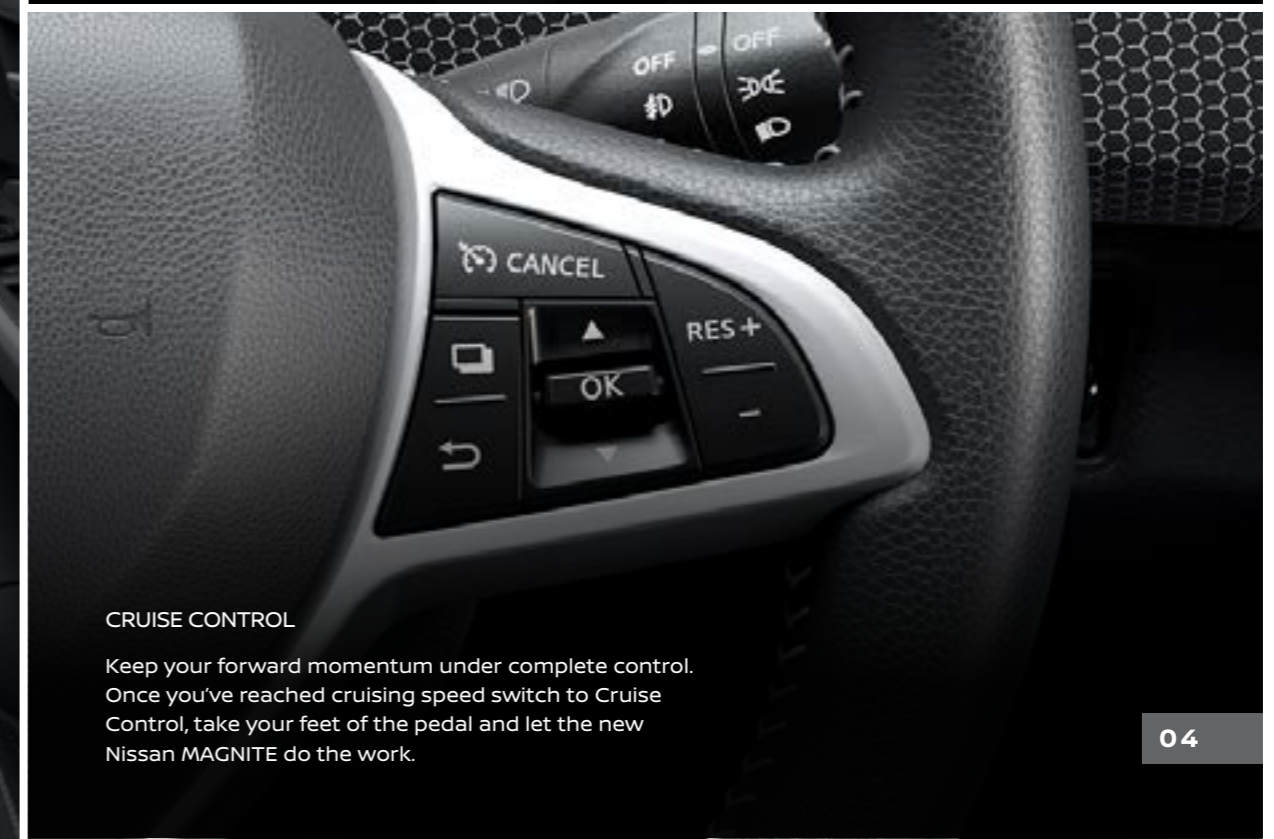
## BEST-IN-CLASS COCKPIT INTERFACE DESIGN

The new Nissan MAGNITE keeps you constantly updated, front and centre, with a superior cockpit interface design. The centre-stack's 5 degree tilt allows for maximum access to the centre console without diverting focus from the road.



### FIRST-IN-SEGMENT HRAO X-TRONIC CVT

The new Nissan MAGNITE'S X-Tronic CVT transmission provides a silky smooth performance with optimum fuel economy, whether you're negotiating heavy traffic or opening up on the highway. Also available in manual transmission.



### CRUISE CONTROL

Keep your forward momentum under complete control. Once you've reached cruising speed switch to Cruise Control, take your feet off the pedal and let the new Nissan MAGNITE do the work.



## INNOVATION ON THE MOVE

Continuing the legacy of tech ingenuity at Nissan, the new Nissan MAGNITE is packed with advanced innovations to make every experience more efficient, easier and, of course, more enjoyable. The world doesn't stand still, and neither should your progress.



WELCOME ANIMATION



ADVANCED DRIVE ASSIST DISPLAY



FUEL HISTORY



TYRE PRESSURE MONITOR

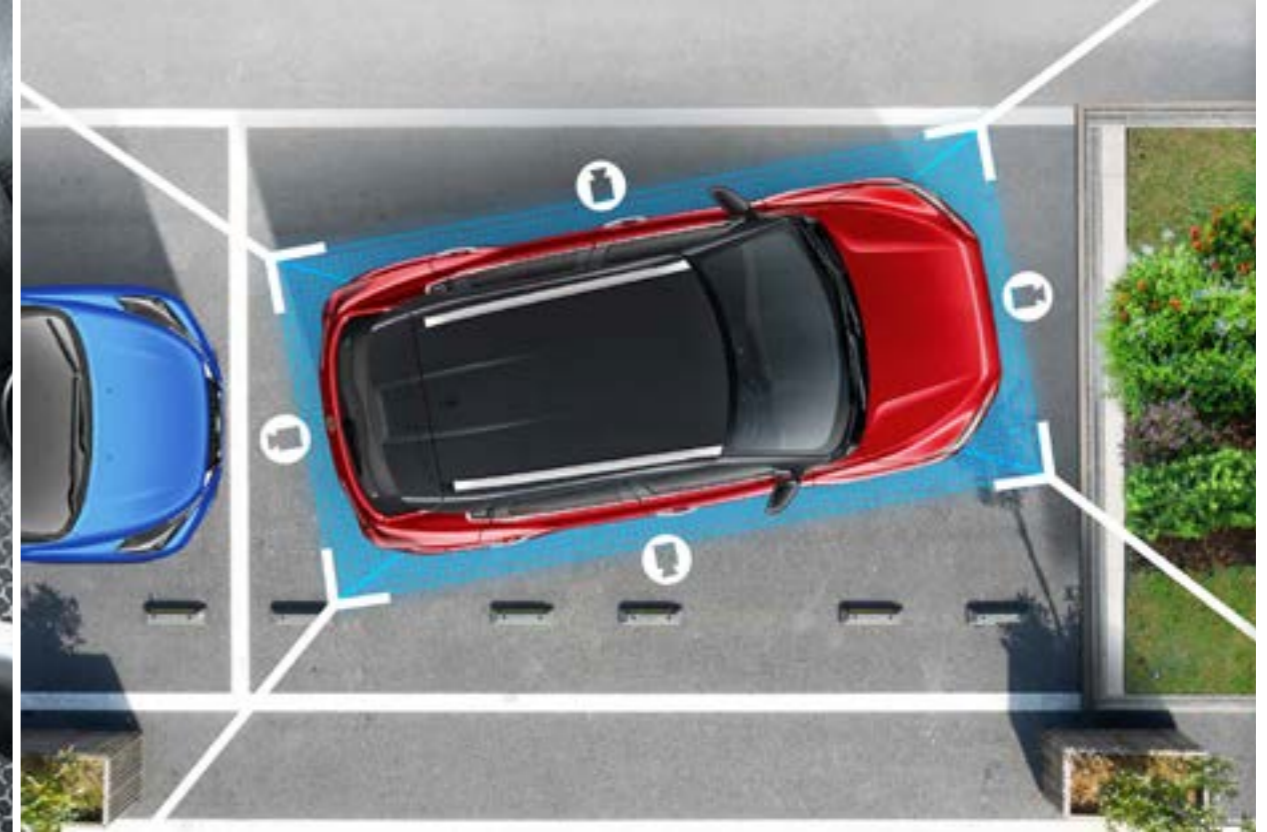
## FIRST-IN-SEGMENT ADVANCED DRIVE ASSIST DISPLAY

Monitor all the vehicle, driving and safety information you need – and much more – on the easy-to-use, fully digital 7-inch TFT display.



FIRST-IN-SEGMENT WIRELESS CONNECTIVITY  
TO ANDROID AUTO & APPLE CARPLAY

Whether you're navigating the roads or getting your groove on, stay connected wirelessly to Android Auto & Apple CarPlay and the new Nissan MAGNITE's full flush 8-inch touchscreen. You're in control without missing a beat.



BIRD'S EYE & FRONT VIEW



FRONT/REAR & SIDE VIEW



BIRD'S EYE & REAR VIEW

## FIRST-IN-SEGMENT AROUND VIEW MONITOR

Parking guesswork is now a thing of the past. With a 360° bird's eye view of your surroundings with the first-in-segment Around View Monitor, you know exactly where you're going at all times.



10L GLOVE BOX



REAR ARMREST WITH CUPHOLDERS  
AND MOBILE HOLDER



REAR AC VENTS



HEIGHT ADJUSTABLE SEATS



CONSOLE AREA STORAGE SPACE



## LOAD UP ON STORAGE

336 litres of cargo space makes packing extra for those away trips a breeze. And thoughtful utility storage spaces mean you can sit back and enjoy every journey without a care in the world – you've got places to be; the new Nissan MAGNITE will get you there effortlessly.



## HILL START ASSIST

With the new Nissan MAGNITE there's no going back – particularly on uphill inclines. Hill Start Assist ensures your progress to the top is steady and sure and eliminates any chance of rolling back.



REAR WINDOW DEFOGGER



KEYLESS ENTRY



## HYDRAULIC BRAKE BOOST

Being prepared for the unexpected is essential on any journey. The new Nissan MAGNITE with Hydraulic Brake Boost ensures you won't lose control in an emergency braking situation – and that you're prepared for any eventuality.



## DUAL AIRBAGS

Standard dual airbags for driver and passenger provide increased safety and protection.



WITH ANTI-ROLL BAR

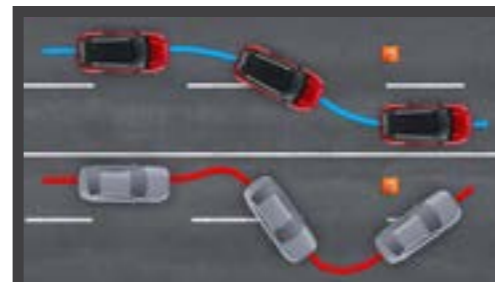


WITHOUT ANTI-ROLL BAR



## MOVE FORWARD WITH CONFIDENCE

No matter where you go and no matter the driving conditions, the new Nissan MAGNITE is designed to get you there in complete safety.



### VEHICLE DYNAMIC CONTROL

Equipped with Vehicle Dynamic Control (VDC), the all new Nissan Magnite takes instant control on challenging terrains, rough roads and sharp curves.



### ANTI-LOCK BRAKING SYSTEM (ABS) WITH ELECTRONIC BRAKE-FORCE DISTRIBUTION (EBD)

These two intuitive safety systems minimise any threats of unexpected road conditions and events.



### TRACTION CONTROL SYSTEM

You're always in control of tough situations such as slippery and loose terrain. The Traction Control System applies maximum traction to avoid wheelspin.



## THE POWER TO PROGRESS

At the core of the new Nissan MAGNITE is a powerful heart that beats with purpose: welcome to the revolutionary HRAO 1.0-litre Turbo engine. Maximum power, maximum torque, maximum fuel efficiency. The way forward.

### POWERFUL HRAO 1.0L TURBO ENGINE

The power of the HRAO engine delivers 74kW of seamless and robust performance in any traffic conditions with quicker and smoother acceleration.



### FUEL ECONOMY

With the aerodynamic design and excellent fuel efficiency, the Nissan MAGNITE will take you further, no matter the journey.





# ~~WE MAKE PROMISES.~~ WE KEEP PROMISES.

INTRODUCING NISSAN ASSURED, IT'S MORE THAN A PROMISE. AS PART OF THE NISSAN FAMILY YOU'RE GUARANTEED OUR COMMITMENT TO CUSTOMER CARE. A LASTING BOND BETWEEN YOU, YOUR VEHICLE AND THE NISSAN BRAND. **THAT'S OUR PROMISE.**

#### **CUSTOMER EXPERIENCE**

We promise to make your Nissan experience one to cherish, from your delivery day and everyday after, our commitment is to deliver a service experience you can trust – and believe in.

#### **CUSTOMER SUPPORT ROADSIDE ASSISTANCE**

We keep you on the road 24/7. Should anything unexpected happen we guarantee you 24-hour roadside assistance, no matter the age of your Nissan, because it's still a Nissan. Just call **0800 NISSAN (64 77 26)** anywhere, anytime. Terms and Conditions do apply.

#### **LICENCE RENEWAL REMINDER**

We'll remind you in advance so you can keep your licence disk up to date.

#### **3 YEAR OR 30 000KM SERVICE PLAN**

For the first 3 years or 30 000km of driving your car, whichever comes first, you can rest easy knowing that our promise to you is a kept one. We'll make sure your car is running smoothly and always on the road.

#### **6 YEAR OR 150 000KM WARRANTY**

As long as your car is under our warranty, we'll always have you covered if anything goes wrong. You don't need to stress for the first 6 years or 150 000km, whichever comes first.

#### **SERVICE AND REPAIRS FREE VEHICLE HEALTH CHECK**

We'll give your car a free health check on every major and minor service prior to any work being carried out, so you know exactly what needs to be done, and how much it will cost.

#### **COMPETITIVELY PRICED PARTS**

We deliver the highest care for your Nissan by fitting only Nissan Genuine Parts. The expertise of our Nissan trained teams will also guarantee best value-for-money by finding the most competitively priced part for your local dealer.

#### **COURTESY CAR**

We will arrange a courtesy car for all warranty repairs should the components required not be available within 48 hours.

**NISSAN** Assured  
More than a promise

Call **0800 NISSAN (64 77 26)**  
or visit [www.nissan.co.za](http://www.nissan.co.za) for more information.

# MAKE A BOLD STATEMENT

You're on your way. How you get there makes all the difference, and it pays to look the part. Nissan Approved Accessories give you a choice of personalisation options for your new Nissan MAGNITE, ensuring your vehicle is as distinctive as you are. Specifically designed to precisely fit your new Nissan MAGNITE, and manufactured to the highest quality standards, Nissan Approved Accessories ensure optimal vehicle performance in support of your vehicle Warranty.



BODY GRAPHICS



FRONT CHROME GARNISH



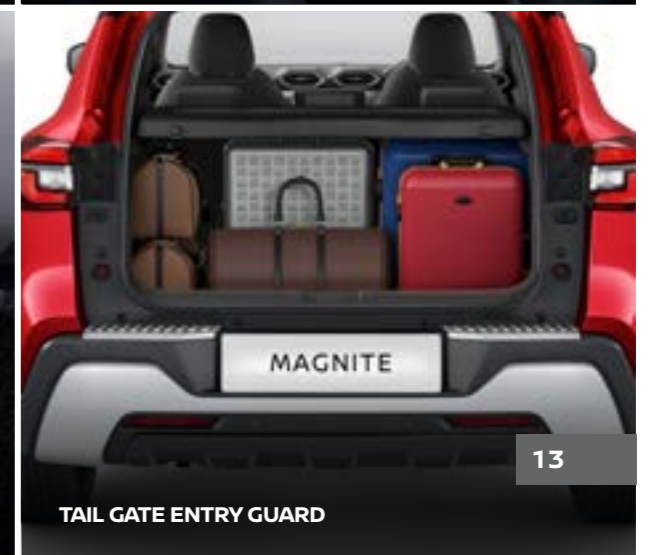
SIDE STEP



WIRELESS CHARGER



SPLASH GAURDS



TAIL GATE ENTRY GUARD

# YOUR JOURNEY, YOUR STYLE.

Choose from 6 exclusive body colours for the new Nissan MAGNITE. Whether you're bold and dynamic or cool and sophisticated, there's one that's your perfect style.



Flare Garnet Red / Onyx Black - XEF



Vivid Blue / Storm White- XJK



Storm White - QM1



Pearl White / Onyx Black - XCC



Blade Silver - K23



Blade Silver / Onyx Black - XBF



\*ACCESSORISED VEHICLE SHOWN

Model	Unit of Measure	Acenta 5MT	Acenta CVT	Acenta Plus 5MT	Acenta Plus CVT
<b>ENGINE</b>					
Engine displacement	cc	999	999	999	999
Number of cylinders		3	3	3	3
Maximum power	kw @ rpm	74 @ 5000	74 @ 5000	74 @ 5000	74 @ 5000
Maximum torque	Nm @ rpm	160 @ 2800-3600	152 @ 2200-4400	160 @ 2800-3600	152 @ 2200-4400
Acceleration 0-100 km/h	sec	11,7	13,4	11,7	13,4
Top speed	km/h	173	168	173	168
Fuel type		Petrol	Petrol	Petrol	Petrol
Fuel tank capacity	ℓ	40	40	40	40
Fuel consumption: Urban cycle	ℓ/100km	6,39	7,36	6,39	7,36
Extra-urban	ℓ/100km	4,61	5,20	4,61	5,20
Combined	ℓ/100km	5,27	6,00	5,27	6,00
Push start button		Std	Std	Std	Std
CO2 emissions - combined	g/km	125,49	142,42	125,49	142,42
Emissions level		BS6 (EUR5)	BS6 (EUR5)	BS6 (EUR5)	BS6 (EUR5)
<b>TRANSMISSION &amp; DRIVE TRAIN</b>					
Transmission		5-speed manual	CVT	5-speed manual	CVT
Gear ratio	1st	3,7273	4.006 - 0.5500	3,7273	4.006 - 0.5500
	2nd	1,9565		1,9565	
	3rd	1,2333		1,2333	
	4th	0,9032		0,9032	
	5th	0,6889		0,6889	
	Reverse	3,5455		3,7708	
Final drive	4,2143	3,7539	4,2143	3,7539	
Driven wheels		2WD	2WD	2WD	2WD
<b>CHASSIS</b>					
Suspension Front		Mac Pherson strut with Lower Transverse link	Mac Pherson strut with Lower Transverse link	Mac Pherson strut with Lower Transverse link	Mac Pherson strut with Lower Transverse link
Suspension Rear		Twin tube telescopic shock absorber	Twin tube telescopic shock absorber	Twin tube telescopic shock absorber	Twin tube telescopic shock absorber
Stabilizer bar		Standard	Standard	Standard	Standard
<b>WEIGHTS &amp; DIMENSIONS</b>					
Gross Vehicle Mass (GVM)	kg	1460	1483	1460	1483
Overall length	mm	3994	3994	3994	3994
Overall width without mirrors	mm	1758	1758	1758	1758
Overall height (Unladen)	mm	1572	1572	1572	1572
Wheelbase	mm	2500	2500	2500	2500
Track (Tread) : front / rear	mm	1536/1535	1536/1535	1536/1535	1536/1535
Overhang: front / rear	mm	787/707	787/707	787/707	787/707
Ground Clearance	mm	205	205	205	205
Turning Radius (curb to curb)	m	5	5	5	5
Maximum roof load	kg	50	50	50	50
Luggage Capacity VDA	ℓ	336	336	336	336

Model	Unit of Measure	Acenta 5MT	Acenta CVT	Acenta Plus 5MT	Acenta Plus CVT
<b>WHEELS &amp; TYRE</b>					
Wheel size & type		16" Machined alloy 2 Tone	16" Machined alloy 2 Tone	16" Machined alloy 2 Tone	16" Machined alloy 2 Tone
Wheel dimensions		195/60R16	195/60R16	195/60R16	195/60R16
Spare tyre		Full Size	Full Size	Full Size	Full Size
<b>EXTERIOR</b>					
Front & Rear bumper: Body colour		Standard	Standard	Standard	Standard
Exterior door mirror		Body Colour	Body Colour	Body Colour	Body Colour
Electric adjustable door mirror		Electric fold + electric adjust	Electric fold + electric adjust	Electric fold + electric adjust	Electric fold + electric adjust
Exterior door handle		Chrome door handle	Chrome door handle	Chrome door handle	Chrome door handle
Headlamp type		Halogen	Halogen	LED Bi Projector Headlamp	LED Bi Projector Headlamp
Headlight leveliser system		Manual	Manual	Manual	Manual
Signature LED daytime running lights		Standard	Standard	Standard	Standard
Front wipers		Variable Intermittent	Variable Intermittent	Variable Intermittent	Variable Intermittent
Rear wiper		Standard	Standard	Standard	Standard
LED Front fog lights		Standard	Standard	Standard	Standard
Rear roof spoiler		Standard	Standard	Standard	Standard
<b>COMFORT &amp; CONVENIENCE</b>					
Seat upholstery		Cloth	Cloth	Cloth	Cloth
Manual 3-way driver seat adjustment		Standard	Standard	Standard	Standard
Manual 2-way passenger seat adjustment		Standard	Standard	Standard	Standard
60/40 Rear seat split		Standard	Standard	Standard	Standard
7inch TFT Advanced Drive-Assist Display		Standard	Standard	Standard	Standard
Manual anti-dazzle rearview mirror		Standard	Standard	Standard	Standard
Outside thermometer		Standard	Standard	Standard	Standard
Cruise control + Adjustable speed limiter		Standard	Standard	Standard	Standard
Steering wheel material		Leather	Leather	Leather	Leather
Shift lever		Urethane	Urethane	Urethane	Urethane
Electric Power Steering (EPS)		Standard	Standard	Standard	Standard
Manual tilt steering wheel adjustment		Standard	Standard	Standard	Standard
Front and Rear electric windows		Standard	Standard	Standard	Standard
Remote central locking		Standard	Standard	Standard	Standard
Smart Entry (Intelligent Key) with Push start system		Standard	Standard	Standard	Standard
Audio System		8" Display Audio (AM/ FM+RDS+USB+BT+WIFI Ready+ Wireless Apple Carplay + Andriod Auto)	8" Display Audio (AM/ FM+RDS+USB+BT+WIFI Ready+ Wireless Apple Carplay + Andriod Auto)	8" Display Audio (AM/ FM+RDS+USB+BT+WIFI Ready+ Wireless Apple Carplay + Andriod Auto)	8" Display Audio (AM/ FM+RDS+USB+BT+WIFI Ready+ Wireless Apple Carplay + Andriod Auto)
Number of speakers		6	6	6	6
Handsfree Bluetooth connectivity		Standard	Standard	Standard	Standard
Steering wheel controls		Standard	Standard	Standard	Standard
Front/Rear cup holders		Standard	Standard	Standard	Standard
Air-conditioner		Auto	Auto	Auto	Auto
12V power socket		Front centre console	Front centre console	Front & rear centre console	Front & rear centre console

Model	Unit of Measure	Acenta 5MT	Acenta CVT	Acenta Plus 5MT	Acenta Plus CVT
<b>SAFETY AND SECURITY</b>					
Dual Front Airbags		Standard	Standard	Standard	Standard
3 Point Driver Seat Belts with Pretensioner & Load limiter		Standard	Standard	Standard	Standard
3 Point Passenger Seat Belts with Pretensioner & Load limiter		Standard	Standard	Standard	Standard
Rear Seat Belt (ELR)		Standard	Standard	Standard	Standard
Anti-lock Braking System (ABS)		Standard	Standard	Standard	Standard
Electronic Brake-force Distribution (EBD)		Standard	Standard	Standard	Standard
Hydraulic Brake Assist (HBA)		Standard	Standard	Standard	Standard
Vehicle Dynamic Control (VDC)		Standard	Standard	Standard	Standard
Traction Control System		Standard	Standard	Standard	Standard
Hill Start Assist (HSA)		Standard	Standard	Standard	Standard
ISOFIX child seat anchorage		Standard	Standard	Standard	Standard
Immobiliser + Alarm		Standard	Standard	Standard	Standard
Rear Parking Camera		Standard	Standard	N/A	N/A
Around View Monitor		N/A	N/A	Standard	Standard
Rear Parking sensors		Standard	Standard	Standard	Standard
<b>SERVICE &amp; WARRANTY</b>					
Service plan		3 year / 30 000 km	3 year / 30 000 km	3 year / 30 000 km	3 year / 30 000 km
Service intervals		10 000 km	10 000 km	10 000 km	10 000 km
Warranty		6 year / 150 000 km	6 year / 150 000 km	6 year / 150 000 km	6 year / 150 000 km

## DIMENSIONS



**A:** Wheelbase:  
2 500 MM

**B:** Overall length:  
3 994 MM

**C:** Overall width:  
1 758 MM

**D:** Overall height:  
1 572 MM



**Nissan's commitment to the environment**

Nissan's environmental philosophy embraces people, vehicles and nature. In the pursuit of a sustainable mobile society, the Nissan Green Program aims to reduce the environmental impact of Nissan vehicles at every stage of the vehicle life cycle, while corporate activities address environmental challenges.

**NISSAN'S commitment to quality:** to provide all customers with a consistently high level of quality, Nissan applies the standard worldwide, to ensure that all Nissan owners enjoy peace of mind for the lives of their vehicles. The approach is based on quality from the customer's perspective on three key elements: 1. The expectation of a smooth driving experience with complete peace of mind. 2. The intangible appeal of a vehicle, its power to captivate and excite, with features that capture attention and imagination. 3. The level of attentiveness and service during the sales process, and long after the sale is concluded.

**Legal Notice**

Every effort has been made to ensure that the content of this brochure is correct at the time of going to print. This brochure has been produced featuring prototype or accessorised vehicles exhibited at motor shows and, in accordance with the company's policy of continuously improving its products, Nissan South Africa reserves the right to change the specification and the vehicles described and shown in this brochure at any time. Nissan Dealers will be informed of any such modifications as quickly as possible. Please check with your local Nissan Dealer to receive the most up-to-date information. Due to the limitations of the printing processes used, the colours shown in this brochure may differ slightly from the actual colours of the paint and interior trim materials used. All rights reserved. Reproduction in whole or part of this brochure without the written permission from Nissan is forbidden. Quoted fuel consumption and emission values have been established using the prescribed method of measurement (United Nations Economic Commission for Europe "ECE" Regulation R101 in the current version) as required under current legislation. This data does not pertain to the specific vehicle and does not comprise part of the offer, but is supplied for the purpose of comparison between the various types of vehicles, in accordance with 1999/94/EC. Driving behaviour / conditions and other non-technical factors contribute towards a vehicle's fuel consumption and CO<sub>2</sub> emissions over and above the determined fuel efficiency of a vehicle.



PHONE US TOLL FREE ON: 0800 NISSAN (647 726)

FOLLOW NISSAN ON:





Nissan Intelligent Mobility moves you one step ahead. In cars that feel like an extension of you, helping you see more and sense more, reacting with you, and sometimes even for you. Nissan Intelligent Mobility is about a better future - moving us to a world that's safer, more sustainable, and exciting.

visit our website at: [www.nissan.co.za](http://www.nissan.co.za)