



**TOYOTA**

LEAD THE WAY



***LAND CRUISER 200***

L

C

2

0

0

**THE WHOLE OF AFRICA IS WAITING: FROM THE WIDE OPEN PLAINS OF THE GOLDEN DESERTS, TO THE WHITE-TOPPED PEAK OF A SNOWY MOUNTAIN, THE DENSE WRANGLE OF THE RAINFOREST, THE GENTLE, PALM-LINED INDIAN OCEAN AND THE ATLANTIC OCEAN OF WHALES AND FREEZING WAVES, THERE'S A LANDSCAPE OUT THERE READY TO CHALLENGE YOU AND YOUR LAND CRUISER 200.**

Whether you choose the Land Cruiser 200 GX or the redesigned Land Cruiser 200 VX-R, the unsurpassed heritage of the luxurious Land Cruiser is undisputed. Being the safest, strongest and most capable 4X4 for over six decades, it's known as the only vehicle to trust on overland adventures - especially in the rough and tough terrain that Africa demands. The Land Cruiser 200 has been upgraded with revolutionary features that provide you with powerful traction in outdoor terrain, convenience in all situations and safety above all else. And after all of that, it's the bold, stylish exterior that will be the catalyst to inspire dreams of the adventures that you will go on and the horizons you will meet.

**With a spacious and comfortable interior, 4.5 litre engine and off-road capabilities, it's the vehicle of choice for all drivers who appreciate a touch of luxury when surrounded by the rugged drama of nature's bounty.**



# RUGGED GOOD LOOKS. EVEN AT -4°C



MODEL SHOWN 4.5 V8 VX-R Diesel  
International model shown. SA specifications may differ.

*The Atlas Mountains 31.0619° N, 7.9161° W*

The Land Cruiser 200 has a bold, aggressive style that makes a huge impression on anyone who sees it. When you step back, you'll notice the GX has a bullish, masculine edge. The VX-R – though just as rugged and with the aggressive stance and height that Land Cruisers are known for – has a more sophisticated edge with its stylish rear spoiler. Practical and stylish wheels on the GX measure in at 17" and the alloy wheels on the VX-R are 18". Both vehicles come with lowered steps for easy access.

If you're heading out to the great outdoors, you'll need all the light you can get. Both models have front fog lamps while the VX-R model also has daytime-running lights (DRL), rear fog lamps, LED headlamps with cleaners and an auto light control system.

Town or country, chances are you'll want to know what is going on around you. Side mirrors are electronically adjustable, have a memory function\*, can be heated\* in bad weather, and automatically retract\* when parked. These mirrors are fitted with Blind Spot Monitor (BSM) functionality\*. Watch the road disappear behind you in your electrochromatic rear view mirror\*.

\*VX-R model only

## VX-R BODY AND STYLING DETAILS

The VX-R model's side mirrors are electronically adjustable with a memory function. They are heated and automatically retractable and have a Blind Spot Monitor.

Electrochromatic rear view mirror

LED headlamps with headlamps cleaners

Auto light control system

Alumite side steps

Rear spoiler

18" alloy wheels

EXPLORE THE

# GREAT INTERIOR

*Central African Republic, 4.3667° N, 18.5833° E*

# THE LUXURY OF COMFORT IS SOMETHING YOU CAN AFFORD WHEN TRAVERSING CHALLENGING TERRAINS

The Land Cruiser 200 has set the new benchmark for an exceptional interior. Just as wide open spaces symbolise the allure of Africa, plenty of space defines the Land Cruiser 200. With three\* generous rows of seats, the vehicle has enough room for up to seven adults\*, ensuring both the driver and passengers will feel relaxed and spoilt.



INTERIOR SHOWN 4.5 V8 VX-R Diesel  
International model shown, SA specifications may differ.



THE VX-R'S 2<sup>ND</sup> ROWS OF SEATS HAS A 40:20:40 RATIO

### COMFORT

The luxury of comfort is something you can afford when traversing challenging terrains. Once inside the vast and comfortable Land Cruiser 200 VX-R, you can settle in to leather seats, adjust heat or ventilation to suit the climate, use the wireless charger\* when need be, enjoy easy access to your cooler box, and activate the reverse camera\* when backing up.

In the VX-R, we've also included Adaptive Cruise Control (ACC) functionality. ACC scans the road and adjusts your driving speed according to the vehicle in front of you, ensuring

you always maintain your preselected following distance. Once you are clear of traffic it will adjust back to your original cruising speed. The GX model includes standard cruise control as part of its feature package.

Boiling hot or icy cold, interior comfort is assured with a number of air vents and air conditioners for the driver and all passengers\*.  
\*VX-R model only

### ADAPTABILITY & SPACE

Not only is interior space a top priority in the Land Cruiser 200 - we've ensured that everything can be

adapted. No matter what your storage needs are, there will be a way to organise the seating so that everyone - and everything - fits in. To do this, the VX-R's 2<sup>nd</sup> row of seats has a 40:20:40 ratio, while the GX's 2<sup>nd</sup> row of seats has 60:40 ratio.

### COOL ENTERTAINMENT

To play a background soundtrack to your adventure, audio features include EMV\*, DAB\* and DVD\* player with nine speakers on VX-R and four on GX.  
\*VX-R model only



TOUCHSCREEN MONITOR\*



COOLER BOX



# O V E R L A N D FROM ALEXANDRIA TO ZEERUST

*Alexandria, Egypt 31.2000° N, 29.9167° E*

For the Land Cruiser, on the road means off the road. Consider the difference between Alexandria, a dusty, bustling dune city in Egypt, and Zeerust, a city of mountains and waterfalls. With the Land Cruiser 200, you would be safe and comfortable in either of these environments. That's because Multi-Terrain Select\* allows you to instantly change the vehicle's settings to match the present road conditions. And it operates very simply – just flick a switch and you're ready for action.

You'd also be able to deal with the canyons and deserts in between. When faced with uphill, take control with Crawl Control – ascension is assured and rocky inclines pose no problem: the Land Cruiser 200 factors in an approach angle of 32 degrees and departure angle of 24 degrees. And with exceptional ground clearance at 230mm, there's room to manoeuvre down riverbeds, through mulchy log-strewn forest paths and across blisteringly hot desert dunes.

\* VX-R model only

## Safe and strong, the Land Cruiser 200 has been the off-road champion for over 60 years.



KDSS - KINETIC DYNAMIC SUSPENSION SYSTEM\*

WHEELS SHOWN IN THE ABOVE ILLUSTRATIONS MAY DIFFER FROM THOSE ON THE AVAILABLE MODELS



ON-ROAD



OFF-ROAD

This vehicle operates on permanent 4-wheel drive with a 6-speed automatic transmission that powers through 195 kW of power at 3400 r/min, running at a maximum torque of 650 Nm at between 1600 - 2600 r/min. Torque distribution is transferred between front and rear axles through the centre-fitted Torsen LSD.

Both vehicles have a 4.5 litre engine, and Variable Gear Ratio Steering\* (VGRS) allows for responsive adjustment - the faster you go, the smoother the ride; slow down and the tension adjusts to allow for immediate situations.

Overall, the double wishbone front suspension and multilink rear suspension work together to give you an extremely comfortable ride. In the VX-R, the Kinetic Dynamic Suspension System (KDSS) stabilises the vehicle using hydraulics, ensuring that off-road driving is completely safe and stable.

\* VX-R model only



### 4.5 V8 VX-R DIESEL ENGINE & PERFORMANCE DETAILS

The 4.5 engine is the most powerful engine in the entire Toyota range.

The 4.5 VX-R diesel engine delivers 195 kW of power at 3400 r/min and torque of 650 Nm at 1600-2600 r/min.

The model features a 1VD-FTV engine, which provides exceptionally powerful performance but with an extremely quiet drive.

The Kinetic Dynamic Suspension System provides enhanced on- and off-road stability.

A 6-speed automatic transmission makes for easier driving.

### 4.5 DIESEL 6AT GX ENGINE & PERFORMANCE DETAILS

The 4.5 engine is the most powerful engine in the entire Toyota range.

The 4.5 GX diesel engine delivers 195 kW of power at 3400 r/min and torque of 650 Nm at 1600-2600 r/min.

The model features a 1VD-FTV engine, which provides exceptionally powerful performance but with an extremely quiet drive.

A 6-speed automatic transmission makes for easier driving.

# NATURE HAS ITS OWN RULES. SO DO WE.



*Ruaha National Park, Tanzania 7.5000° S, 35.0000° E*

The Land Cruiser's safety record and heritage as a strong, safe on- and off-road vehicle precedes it. When you head out into the great unknown, you can rest assured that you are sufficiently protected.

MODEL SHOWN 4.5 V8 VX-R Diesel  
International model shown. SA specifications may differ.

## EVALUATING THE SITUATION

Always at the forefront of technological innovation, the Land Cruiser 200 team has added a number of features to the range that take safety to the next level.

When in transit, your Blind Spot Monitor\* detects and informs you of vehicles that are present in blind spots. There are a number of warning signals activated in this situation: when an approaching vehicle enters the detection area and the indicator has been activated, the indicator on the corresponding outer mirror will flash. If a vehicle driving alongside is detected in the blind spot, the

indicator on the corresponding outer mirror will illuminate. The Rear Cross Traffic Alert\* operates in the same way when reversing. Using radar, a buzzer will sound when your VX-R is within a certain distance of another vehicle and the corresponding indicator will flash in the outer mirrors.

## SAFETY AND SECURITY SYSTEMS

Security and safety systems include an immobiliser and alarm, child protection on the rear doors, ISOFIX seatbelt anchors and a wireless door lock (with a smart-entry system and auto-door lock on the VX-R model).



AIRBAGS ARE DISTRIBUTED THROUGHOUT THE INTERIOR (VX-R MODEL SHOWN)



MINIMISED WHEEL-LOCK AND SPIN



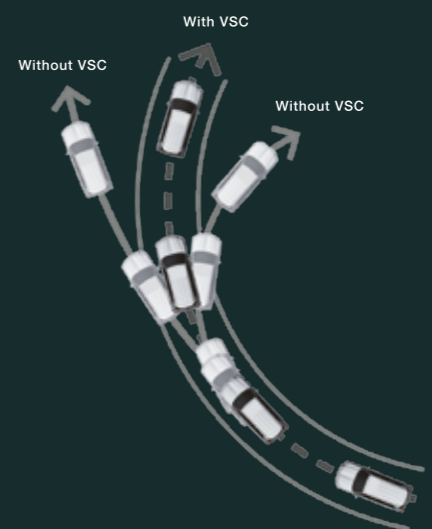
INCREASED EASE OF DRIVE AND STABILITY



ESCAPING FROM TIGHT SPOTS



WHEELS WEDGED



VEHICLE STABILITY CONTROL (VSC)

## A 360-DEGREE VIEW

If you need to be aware of your exterior, the Multi-Terrain Monitor\* has got you covered. Fitted with four cameras on the front and back exterior sides, the driver has a 360-degree view of all four wheels at ground level. This view is displayed on a screen on the dashboard so that the driver can see what the wheels are doing while manoeuvring the vehicle off-road without having to get out and look.

## STOP & GO

In the Land Cruiser 200, stopping is as important as going. Both vehicles have an emergency brake signal - a light that will flash rapidly to alert the other driver in an attempt to avoid a rear-end collision.

The Land Cruiser 200 also comes with Anti-lock Braking System (ABS), Brake Assist (BA), Electronic Brake-force Distribution (EBD), Hill Assist Control (HAC), Traction Control (TRC) and Vehicle Stability Control (VSC). Airbags are distributed in the following areas: driver, front passenger, curtain shield, driver and front passenger knee, front and rear side.

\* VX-R model only

## AVOIDING DISASTER

The Pre-crash system\* feature is operational to prevent the chances of a collision taking place. In an emergency, the Pre-Crash System\* becomes active. A pre-collision sensor and the collision detection ECU (Electronically Controlled Unit) work together to analyse distance, relative speed and driving line. The system is then able to determine the probability of a collision.

If there is a possibility that a collision might happen, a message and warning buzzer is sounded to alert the driver. Depending on the force that the brake pedal has been depressed, different brake systems will come into action.

**WILD, WIDE OPEN SPACES  
REWARD US WITH NEW  
ENERGY, IDEAS AND  
PERSPECTIVES.  
TOYOTA IS COMMITTED TO  
PRESERVING OUR NATURAL  
HERITAGE AND KEEPING  
AFRICA, AFRICA.**

| Model             | Fuel consumption<br>l/100 km* | CO <sub>2</sub> emissions<br>g/km* |
|-------------------|-------------------------------|------------------------------------|
| 4.5 V8 VX-R       | 10.2                          | 270                                |
| 4.5 Diesel 6AT GX | 10.2                          | 270                                |

Toyota not only has a long track record of caring for the environment but has also put visionary plans and policies in place for the future. These strive to meet the transportation needs of the world in a way that won't harm the earth. Any current negative impact is being addressed through the comprehensive Toyota Environmental Action Plan or ECO-project. The ECO-project is the cornerstone of Toyota's environmental commitment-in-action and seeks to minimise environmental impact during all areas of operation from design to the use of materials and the manufacturing process to end-of-life recycling programmes, all with a goal of minimal emissions.

**With these guiding principles in mind, the Land Cruiser 200 was carefully designed to consider the environment. While supremely powerful, the Land Cruiser 200 also achieves top-level fuel efficiency.**

By reducing CO<sub>2</sub> emissions, the Land Cruiser 200 has achieved a Euro 4 emissions rating. A reduction in the use of environmentally-burdensome materials has also made its diesel engine as environmentally friendly as possible.

The materials of the Land Cruiser's powerful body have also been designed to be easy to repair and recycle. 85% of the Land Cruiser 200 is recyclable. The bumpers and fenders in particular are durable yet easy to repair and recycle. Even from the very early stages of the design and development, reduction in the use of environmentally-burdensome materials was a key consideration.

\*The fuel consumption and CO<sub>2</sub> values of your vehicle may vary from those measured. Driving behaviour, as well as other factors such as road conditions, traffic, vehicle conditions, installed equipment, load and number of passengers play a role in determining a vehicle's fuel consumption and CO<sub>2</sub> emissions.

Toyota is serious about combating the problems associated with waste tyres in the country and therefore has taken up its producer responsibility as defined by the new Waste Tyre Management Act of 2008.  
Waste Tyre Registration Number: TPREG0031GAU

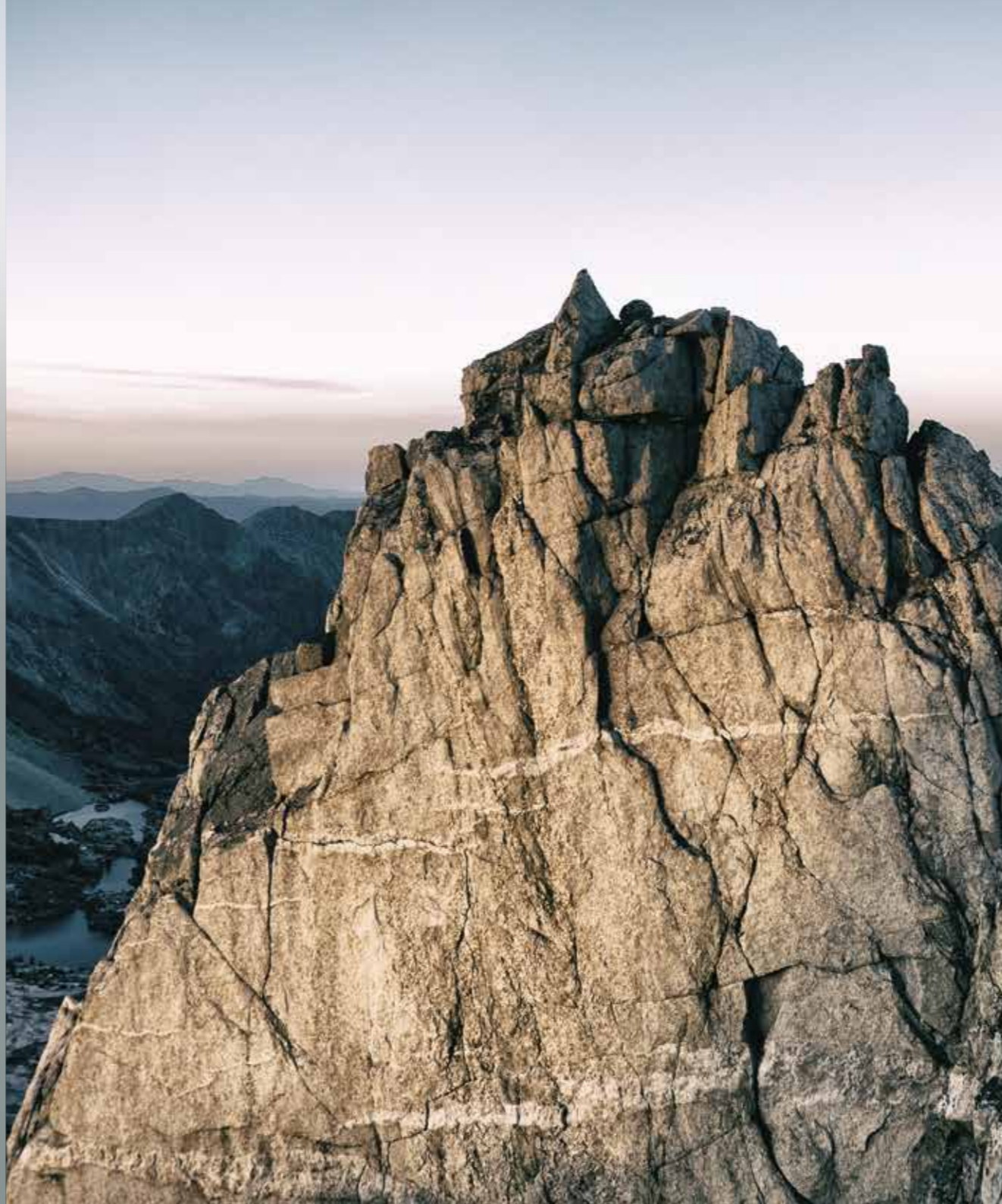
*Ituri Rainforest, DRC, 1.5571° N, 28.4491° E*

**MAKE MEMORIES.  
NOT A MARK**

| LAND CRUISER 200 SPECIFICATIONS     | 4.5 V8 VX-R Diesel        | 4.5 GX Diesel       |
|-------------------------------------|---------------------------|---------------------|
| <b>Engine and drivetrain</b>        |                           |                     |
| 1 <sup>st</sup> Gear ratio          | 3.333                     | 3.333               |
| 2 <sup>nd</sup> Gear ratio          | 1.960                     | 1.960               |
| 3 <sup>rd</sup> Gear ratio          | 1.353                     | 1.353               |
| 4 <sup>th</sup> Gear ratio          | 1.000                     | 1.000               |
| 5 <sup>th</sup> Gear ratio          | 0.728                     | 0.728               |
| 6 <sup>th</sup> Gear ratio          | 0.588                     | 0.588               |
| Bore x stroke (mm)                  | 86.0x96.0                 | 86.0x96.0           |
| Catalytic converter                 | Standard-2                | Standard-2          |
| Compression ratio                   | 16.8:1                    | 16.8:1              |
| Differential gear ratio             | 3.909                     | 3.909               |
| Displacement (cm <sup>3</sup> )     | 4461                      | 4461                |
| Driven wheels                       | 4WD                       | 4WD                 |
| Emission control                    | Euro 4-with OBD           | Euro 4-with OBD     |
| Intercooler                         | •                         | •                   |
| Maximum power (kW @ r/min)          | 195 @ 3400                | 195 @ 3400          |
| Maximum torque (Nm @ r/min)         | 650 @ 1600-2600           | 650 @ 1600-2600     |
| Number of cylinders and arrangement | V-Type-8                  | V-Type-8            |
| Reverse gear ratio                  | 3.061                     | 3.061               |
| Starting system                     | Push Start                | Rotary (Mechanical) |
| Front suspension                    | Double Wishbone with KDSS | Double Wishbone     |
| Rear suspension                     | Multilink with KDSS       | Multilink           |
| Transmission                        | 6 - speed automatic       | 6 - speed automatic |
| Turbo charger                       | •                         | •                   |
| Valve mechanism                     | 32 DOHC                   | 32 DOHC             |

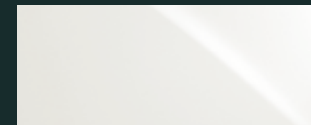
| Wheels and tyres                | 4.5 V8 VX-R Diesel | 4.5 GX Diesel   |
|---------------------------------|--------------------|-----------------|
| Spare tyre                      | 285/60R18          | 285/65R17       |
| Wheel and tyre (front and rear) | 285/60R18 Alloy    | 285/65R17 Steel |

| Exterior features                | 4.5 V8 VX-R Diesel                                                                                                           | 4.5 GX Diesel |
|----------------------------------|------------------------------------------------------------------------------------------------------------------------------|---------------|
| LED Daytime-Running Lights (DRL) | •                                                                                                                            |               |
| Front fog lamps                  | •                                                                                                                            | •             |
| LED headlamps                    | •                                                                                                                            | Halogen       |
| Headlamps cleaner                | •                                                                                                                            |               |
| Automatic headlamp levelling     | •                                                                                                                            |               |
| Auto light control system        | •                                                                                                                            |               |
| Side mirrors                     | Colour coded, camera, heated, Blind Spot Monitor (BSM), with indicator, memory, electrochromatic, auto-retractable and power | Black, power  |
| LED rear lights                  | •                                                                                                                            |               |
| Rear fog lamp                    | •                                                                                                                            |               |
| Side protective mouldings        | •                                                                                                                            |               |
| Auto rain-sensing window wiper   | •                                                                                                                            |               |
| Towing hook                      | •                                                                                                                            | •             |

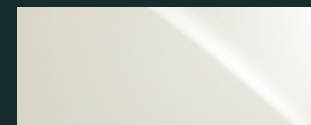


| LAND CRUISER 200 SPECIFICATIONS                                                             | 4.5 V8 VX-R Diesel                                  | 4.5 GX Diesel                          |
|---------------------------------------------------------------------------------------------|-----------------------------------------------------|----------------------------------------|
| <b>Exterior features (continued)</b>                                                        |                                                     |                                        |
| Front and rear mud guards                                                                   | •                                                   | •                                      |
| Rear spoiler                                                                                | •                                                   |                                        |
| Side step                                                                                   | Alumite                                             | Aluminium                              |
| <b>Interior, comfort and convenience</b>                                                    |                                                     |                                        |
| Cool box                                                                                    | •                                                   | •                                      |
| Cup holders                                                                                 | 6                                                   | 4                                      |
| Electrochromatic rear view mirror                                                           | •                                                   |                                        |
| Key reminder warning                                                                        | •                                                   | •                                      |
| Overhead console                                                                            | •                                                   |                                        |
| 2nd row seats                                                                               | 40:20:40                                            | 60:40                                  |
| Seat trim                                                                                   | Leather                                             | Fabric                                 |
| Shift lever and knob                                                                        | Leather                                             | Urethane                               |
| Steering wheel                                                                              | 4 spoke/leather                                     | 4 spoke/urethane                       |
| 3rd row seats                                                                               | Fold up                                             |                                        |
| Cruise control                                                                              | Adaptive                                            | •                                      |
| Auto air conditioner                                                                        | •                                                   | •                                      |
| Audio system                                                                                | DAB and EMV                                         | Display Audio: DAB and RDS             |
| Auxiliary input                                                                             | •                                                   |                                        |
| Reverse camera                                                                              | EMV/with guidelines and Multi-Terrain Monitor (MTM) |                                        |
| Bluetooth                                                                                   | •                                                   | •                                      |
| Disc type                                                                                   | DVD                                                 | CD                                     |
| Light reminder warning                                                                      | Buzzer and Auto cut-off                             | Buzzer and Auto cut-off                |
| Multi-Information Display (MID)                                                             | TFT colour                                          |                                        |
| Navigation system                                                                           | •                                                   | •                                      |
| Power socket                                                                                | Front - 12V, Rear - 12V and Boot - 220V             | Front - 12V, Rear - 12V and Boot - 12V |
| Power steering                                                                              | Variable Gear Ratio Steering (VGRS)                 | Hydraulic                              |
| Electric windows                                                                            | All one-touch                                       | All one-touch                          |
| Rear air conditioner                                                                        | Auto                                                |                                        |
| Seat heater (front and rear)                                                                | •                                                   |                                        |
| Seat lumbar support                                                                         | Driver 2-way                                        | Driver 2-way                           |
| Seat ventilation                                                                            | Standard-front                                      |                                        |
| Speakers                                                                                    | 9                                                   | 4                                      |
| Steering column adjustments                                                                 | Power/tilt, telescopic and memory                   | Manual/tilt and telescopic             |
| Steering wheel switches                                                                     | •                                                   |                                        |
| USB port                                                                                    | •                                                   | •                                      |
| Wireless charger                                                                            | •                                                   |                                        |
| <b>Safety and security</b>                                                                  |                                                     |                                        |
| Airbags on-off switch                                                                       | •                                                   |                                        |
| Alarm and immobiliser                                                                       | •                                                   | •                                      |
| Auto door lock                                                                              | •                                                   |                                        |
| Child lock                                                                                  | •                                                   | •                                      |
| Child Restraint System (ISOFIX)                                                             | •                                                   | •                                      |
| Airbags - front passenger, driver, curtain shield, driver and front passenger knee and side | •                                                   | •                                      |
| Emergency brake signal                                                                      | •                                                   | •                                      |

## STANDARD COLOURS



GLACIER WHITE 040

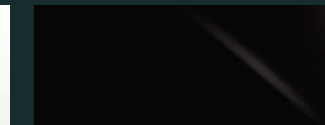


PEARL WHITE METALLIC 070\*



SATIN SILVER METALLIC 1F7

## COLOURS BY ORDER ONLY



ATTITUDE BLACK 218



RUBY METALLIC 303



SUNSET DUNE METALLIC 4S6



MIDNIGHT OCEAN METALLIC 8P8



GOLDEN BEIGE METALLIC 4R3



GRAPHITE GREY METALLIC 1G3\*\*

\* VX-R model only

\*\* GX model only

| LAND CRUISER 200 SPECIFICATIONS           | 4.5 V8 VX-R Diesel                      | 4.5 GX Diesel                           |
|-------------------------------------------|-----------------------------------------|-----------------------------------------|
| <b>Safety and security (continued)</b>    |                                         |                                         |
| Front brake                               | Ventilated Disc                         | Ventilated Disc                         |
| Pre-Crash System (Brake Synchronised)     | •                                       |                                         |
| Rear brake                                | Ventilated                              | Ventilated                              |
| Seat belt warning                         | Driver and passenger (buzzer and light) | Driver and passenger (buzzer and light) |
| Wireless door lock                        | Smart Entry                             | •                                       |
| Tyre pressure monitor                     | •                                       |                                         |
| Park Distance Control                     | Front and rear                          | Rear                                    |
| Anti-lock Braking System (ABS)            | •                                       | •                                       |
| Blind Spot Monitor (BSM)                  | With Rear Cross Traffic Alert           |                                         |
| Brake Assist (BA)                         | •                                       | •                                       |
| Electronic Brake-Force Distribution (EBD) | •                                       | •                                       |
| Hill Assist Control (HAC)                 | •                                       | •                                       |
| Multi-Terrain Select (MTS)                | •                                       | •                                       |
| Traction Control (TRC)                    | •                                       | •                                       |
| Vehicle Stability Control (VSC)           | •                                       | •                                       |
| Lane Keeping Assist                       | •                                       |                                         |
| Crawl Control                             | •                                       | •                                       |
| <b>Dimensions and capacity</b>            |                                         |                                         |
| Approach angle (°)                        | 32.0                                    | 32.0                                    |
| Break over angle (°)                      | 25                                      | 25                                      |
| Departure angle (°)                       | 24.0                                    | 24.0                                    |
| Front overhang (mm)                       | 925                                     | 925                                     |
| Front tread (mm)                          | 1650                                    | 1640                                    |
| Fuel tank size (l)                        | 93                                      | 93                                      |
| Gross Combination Mass (GCM)              | 6850                                    | 6850                                    |
| Ground clearance (mm)                     | 230                                     | 230                                     |
| Gross Vehicle Mass (GVM)                  | 3350                                    | 3350                                    |
| Height (mm)                               | 1950                                    | 1970                                    |
| Kerb weight (kg)                          | 2740                                    | 2640                                    |
| Length (mm)                               | 4990                                    | 4990                                    |
| Luggage capacity (l)                      | 1276                                    | 1276                                    |
| Maximum gradability                       | 45                                      | 45                                      |
| Maximum tilt angle (°)                    | 44                                      | 44                                      |
| Rear overhang (mm)                        | 1215                                    | 1215                                    |
| Rear tread (mm)                           | 1645                                    | 1635                                    |
| Secondary fuel tank (l)                   | 45                                      | 45                                      |
| Towing capacity - unbraked (kg)           | 750                                     | 750                                     |
| Towing capacity - braked (kg)             | 3500                                    | 3500                                    |
| Turning circle (tyres, m)                 | 5.9                                     | 5.9                                     |
| Wading depth (mm)                         | 700                                     | 700                                     |
| Wheelbase (mm)                            | 2850                                    | 2850                                    |
| Width (mm)                                | 1980                                    | 1980                                    |
| <b>Service plan</b>                       |                                         |                                         |
| Service intervals (km)                    | 10 000                                  | 10 000                                  |
| Service plan                              | 5years / 90000 km                       | 5years / 90000 km                       |

## LAND CRUISER 200 ACCESSORIES LIST

| Item                           | Part Number | Description                                                                                                                                                      | 4.5 D V8 VX-R Beige | 4.5 D V8 VX-R Black | 4.5D V8 GX |
|--------------------------------|-------------|------------------------------------------------------------------------------------------------------------------------------------------------------------------|---------------------|---------------------|------------|
| Alloy Nudge Bar                | PZQ2960680  | With decorative and protective polyurethane moulded over-riders, it features polished aluminium tubular upper construction and tailored bottom profile sections. | •                   | •                   | •          |
| Tow bar Detachable             | PZN52Q3005  | Detachable tow bar allows for hassle-free towing. Please consult owners manual for the towing capacity of your vehicle.                                          | •                   | •                   | •          |
| Bonnet guard - dark smoke      | PZN53Q0005  | Easily fitted acrylic bonnet protector. Available in a dark smoke finish. Protects the bonnet from stone chips.                                                  | •                   | •                   | •          |
| Head Lamp guard (GX) - Clear   | PZN81Q0006  | Protects your valuable headlamps from shattering, sandblasting, fading or breaking.                                                                              |                     |                     | •          |
| Head Lamp guard (VX-R) - Clear | PZN81Q0005  |                                                                                                                                                                  | •                   | •                   |            |
| Boot mat (GX) - Rubber         | PZN63Q1016  | Non-slip rubber mat that's extremely easy to clean. Protects your vehicle's original load area carpet and prevents items from shifting around.                   |                     |                     | •          |
| Boot mat (VX-R) - Rubber       | PZN53Q1001  |                                                                                                                                                                  | •                   | •                   |            |
| Boot mat (GX) - Fabric         | PZN63Q1015  | Luxury, high quality aerotouch load area mat that is dust absorbent, stain proof and fire resistant.                                                             |                     |                     | •          |
| Boot mat (VX-R) - Fabric       | PZN63Q1008  |                                                                                                                                                                  | •                   | •                   |            |
| Compressor system              | GTA76U5000  | This integrated compressor replaces an existing panel in the boot of the car and allows for hassle-free inflation of the tyres for your vehicle.                 | •                   | •                   |            |

## LAND CRUISER 200 ACCESSORIES LIST

| Item                                         | Part Number  | Description                                                                                                                                                                                                                                                     | 4.5 D V8 VX-R Beige | 4.5 D V8 VX-R Black | 4.5D V8 GX |
|----------------------------------------------|--------------|-----------------------------------------------------------------------------------------------------------------------------------------------------------------------------------------------------------------------------------------------------------------|---------------------|---------------------|------------|
| Cross Bars                                   | PZ4037062000 | Aluminium fully lockable cross bars designed to reduce wind resistance. Extends the carrying potential for a variety of equipment and range of attachments, including roof boxes, bikes, kayaks, fishing rods, skis, surf/sail board etc.                       | •                   | •                   | •          |
| Docking system and tablet holder set - Beige | PZN86P0000   | The tablet holder and docking system provides a secure and safe docking system with its self-securing mechanism for any Smart phone, Tablet or E-Reader.                                                                                                        | •                   |                     |            |
| Docking system and tablet holder set - Black | PZN86DD600   | The tablet holder and docking system provides a secure and safe docking system with its self-securing mechanism for any Smart phone, Tablet or E-Reader.                                                                                                        |                     | •                   |            |
| Exhaust tip                                  | GTA17U3000   | Custom made to fit the Prado, this chrome exhaust tip enhances the image of the vehicle with easy installation.                                                                                                                                                 | •                   | •                   |            |
| Laser shades (complete set)                  | GTA67U0001   | Toyota Laser Sun Shades are custom made to perfectly fit your vehicle. With high strength magnets embedded in the shade frame, they attract to the window frame of your vehicle, making them easy to install and remove. Second row also available (GTA67U0000) | •                   | •                   |            |
| Toyota Safety Film Kit (150 micron)          | PZN55X3040   | Quality 150 micron safety film available in clear, 35% or 50% variants. Reinforces the glass and keeps shattered glass in place in the event of an accident. Also available in 100 micron (PZN55X3039)                                                          | •                   | •                   | •          |
| Wheel locks - Alloy                          | PZN33U2002   | Set of four wheel nuts with a unique coded key. Provided added security at a low cost for your wheels and tyres.                                                                                                                                                | •                   | •                   |            |
| Wheel locks - Steel                          | PZN33U2003   |                                                                                                                                                                                                                                                                 |                     |                     | •          |



Toyota vehicles are known for their Quality, Durability and Reliability. Keeping your Toyota Genuine means no compromises in terms of safety, performance and resale value. The range of Genuine Products and Approved Service will ensure complete peace of mind throughout the ownership journey and beyond. For more information on HOW TO KEEP YOUR TOYOTA GENUINE visit. [www.toyota.co.za/genuine](http://www.toyota.co.za/genuine).

### Toyota Genuine Products

For guaranteed fit and function, Genuine Parts are essential in maintaining the safety and reliability of your vehicle. **Genuine Parts** comply with all safety, regulatory and environmental requirements, making it the obvious choice. The same exacting precision applies to **Toyota Accessories**, developed by engineers with extensive knowledge on vehicle integration - you can enhance the appeal and functionality of your Land Cruiser 200 without compromising its safety features or warranty. Warranties are about peace of mind, and the **Genuine Unlimited Warranty** is designed to provide superior cover (up to 6 years or 8 years, unlimited mileage) and a seamless claims process thanks to full integration with Toyota systems. The **Genuine Extended Service Plan** also enjoys exclusive approval by Toyota SA and provides flexible extension options up to 7 years or 200 000 km to suit your period of ownership. Paying today's rates for tomorrow's maintenance is a sensible way to protect the resale value of your Land Cruiser 200 by means of a full service history.

### Toyota Approved Services

Specialised vehicle maintenance requires first-class facilities, advanced equipment and expert knowledge. **Toyota Quality Service** not only promises accurate diagnosis and repair, but also a philosophy of building trust through a genuine concern for the needs of our customers. To complement the extensive network of Toyota dealers, we have a vast number of **Accredited Body and Paint Repairers**, selected on stringent criteria to ensure outstanding workmanship and customer service. You can maintain your vehicle's pristine condition without compromising its warranty thanks to the exclusive use of Genuine Parts by our Accredited Repairers. Offering 24-hour access to a full complement of assistance and recovery benefits, **Toyota Roadside Assistance** provides the peace of mind that competent support is only a phone call away.

# TOYOTA GENUINE MEANS

✓ UNCOMPROMISED SAFETY    ✓ GUARANTEED QUALITY    ✓ PEACE OF MIND



Download the **MyTOYOTA** App from the Google Play Store or the Apple iStore to receive the latest Toyota news, keep an eye on your vehicle's finance and book your vehicle for a service. You can also book a test drive or arrange roadside assistance, all on your phone.

### DISCLAIMER:

The information contained in this brochure is provided as is and without any warranties of any kind, whether expressed or implied, including but not limited to, implied warranties of satisfactory quality, fitness for a particular purpose and/or correctness. The contents of this brochure are for general information purposes only and do not constitute advice. Toyota Motor Corporation of Japan and Toyota South Africa Motors (Pty) Limited does not represent or warrant that the information and/or specifications contained in this brochure are accurate, complete or current and specifically stipulates that certain vehicle details and specifications contained in this brochure may differ in available models. Therefore, neither Toyota Motor Corporation of Japan nor Toyota South Africa Motors (Pty) Limited make any warranties or representations regarding the use of the content, details, specifications, or information contained in this brochure in terms of their correctness, accuracy, adequacy, usefulness, timeliness, reliability or otherwise, in each case to the fullest extent permitted by law. Please note that claiming of input VAT needs to be verified by customers prior to vehicle purchase as these rulings are subject to SARS interpretation. Toyota South Africa Motors' rights remain reserved.

FINANCIAL  
SERVICES



### TOYOTA FINANCIAL SERVICES

There is no 'one-size-fits-all' when it comes to vehicle finance and insurance, there is only you. With fast, flexible and convenient services we will structure the perfect Land Cruiser 200 deal for you.

At Toyota Financial Services, we believe that purchasing your Toyota should be as enjoyable as driving it. Toyota Financial Services is the fast, flexible and convenient means of financing your Land Cruiser 200. We have created a range of financial products that suit both private and business customers, easily accessible through your local Toyota dealer. We take the hassle out of arranging finance.

Toyota Financial Services (South Africa) Ltd is an authorised Financial Services (FSP No. 7454) and Registered Credit Provider (NCRCP62). For comprehensive information about products offered by Toyota Financial Services, visit [www.toyota.co.za/toyota-finance](http://www.toyota.co.za/toyota-finance)

