



Caddy Crew Bus

Commercial
Vehicles



The Caddy Crew Bus



Low Fuel Consumption

Averaging from 5.7 to 8.2ℓ/100 km*.

Standards of safety

Includes driver and front passenger airbags and Multi-Collision Braking (MCB) System as standard.

Cleverly thought out storage system

Several storage possibilities in the interior.

Long load compartment

Up to 2,249 mm in the Caddy Maxi.

Unique drive concept

DSG® dual clutch gearbox.

Maximum functionality and flexibility

Front passenger seat with folding, double-folding and removable rear seats, wide sliding door which comes standard on the Caddy Crew Bus and Caddy Maxi Crew Bus.

*Fuel consumption and CO₂ emissions values were obtained in accordance with the prescribed uniform measuring standard (SANS 20101: 2006 / ECE R101: 2005 in its currently applicable version). The verified values do not apply to a specific vehicle and do not constitute part of the product offer. They are provided solely for the purposes of comparison between different vehicle models. Because of the need to maintain strict comparability of results achieved by the standard tests, they cannot be fully representative of real-life driving conditions. Variations in driving styles and in road, vehicle and ambient conditions, will have a bearing on the results achieved on the road. For these reasons consumption achieved on the road will not necessarily accord with these verified values. Based on lightest variable (no options) and 90% tank filling. Weight may vary depending on options fitted to vehicle. Comparison between different vehicle models. Because of the need to maintain strict comparability of results achieved by the standard tests, they cannot be fully representative of real-life driving conditions. Variations in driving styles and in road, vehicle and ambient conditions, will have a bearing on the results achieved on the road. For these reasons consumption achieved on the road will not necessarily accord with these verified values. Based on lightest variable (no options) and 90% tank filling. Weight may vary depending on options fitted to vehicle.



Getting the job done

Each day brings countless new challenges, which call for quick and professional solutions.

With the Caddy Crew Bus you have a vehicle that provide the best support in virtually every situation. More functional, flexible and versatile than ever before, the manoeuvrable and compact light commercial vehicles offer you everything you need to convey a professional image to your customers.



The design

No matter what industry you work in, the Caddy Crew Bus always exudes a high degree of competence and dependability.

This is achieved through its sharper and clearer lines, dynamic front, and redesigned back end. The Caddy Crew Bus comes standard with rear wing doors and the option of a tailgate. Further highlights include the chrome trim strip on the radiator grille, and the striking headlights.

The interior

The Caddy has been thoroughly enhanced – outside and inside. The high-quality finish on the cockpit impresses with its clearly arranged instrument cluster and easy-grip steering wheel with sporty flat bottom. This can be adjusted to individual preferences, and promotes a natural seating position.

Ergonomically designed seats – available optionally with robust cloth upholstery – and ample head and leg room, as well as improved interior acoustics contribute to greater overall driving comfort. Specially contoured and patented headrests are an additional safety feature for passengers.



The cleverly thought-out system



**In any and every job,
efficiency and
organisation is key.**

The Caddy offers you the support you need, with a storage system made up of several storage compartments and surfaces of varying sizes. Take, for instance, the roof shelf, which extends across the full width of the vehicle, and opens directly above the driver and front passenger seats. Invisible from outside, it offers sufficient space for work gloves, a lunchbox, or a notebook computer.

The storage pockets in the doors can hold a 1-litre bottle each, while the centre console is equipped with four cup holders. Two open glove compartments are also included. This keeps everything in the right place.

The wide sliding door and tail-end solutions



Hop in, hop out. The doors of a commercial vehicle are opened and closed repeatedly over the course of a day – and heavily strained in the process.

That is why the Caddy is built with hinges, rails and handles that are equal to the most demanding conditions. The low loading sill height, and numerous door variants are also a testament to this. The Caddy Crew Bus tailgate is equipped with a soft touch closing system as standard for effortless loading and unloading. Dual sliding doors are a standard feature across the Caddy Crew Bus range.

Rear wing doors (¾ to ¼) with glass windows come standard on the Caddy Crew Bus.



Tailgate with glass windows for the Caddy Crew Bus (optional).



The short wheel base Caddy Crew Bus



Up to seven seats. Plenty of storage compartments. All of the highest quality.

No other vehicle in its class combines versatility, flexibility and solidity as perfectly as the Caddy Crew Bus. The hard-wearing interior can be extended from five up to an optional seven seats and, with just a few adjustments, can also be converted into a 2-seater with a 3.2 m³ load compartment if you need to deliver larger goods or materials. Even smaller items can be quickly and securely stored away. Your handy clipboard is stored neatly in the roof shelf and the invoice book is within arm's length in one of two glove compartments.



Maximum flexibility

**Versatile interior.
Well thought-out down
to the last detail.**

Every customer order is different. That is why the Caddy Crew Bus is so flexible. In just a few minutes it can be transformed from a comfortable 5-seater into a fully fledged delivery van. There is no end to the various layout options.

This is because of the separately folding and double-folding bench seats in the passenger compartment, which can be individually removed if necessary. For those who not only want to carry people in their Caddy Crew Bus, but also transport materials and tools, the passenger compartment is equipped with an anti-slip rubber floor. The load can be easily secured to the four fold-down lashing rings with the help of tensioning belts or nets.

Folding and double-folding 3-seater bench seat

The bench seat in the second row of seats consists of a single seat and a 2-seater bench seat. Both parts can be folded, double-folded and removed separately from one another. By removing the 3-seater bench seat completely, a generously sized level load platform is created.





4,408 mm
vehicle length
in the Caddy Crew Bus

4,878 mm
longer in the
Caddy Maxi Crew Bus

The Caddy Maxi Crew Bus

Extra length. Extra versatility

Big tasks demand big vehicles. That is why the Caddy Crew Bus is also available in a longer variant: the Caddy Maxi Crew Bus. Equipped with five comfortable seats, dual sliding doors and a 4.1 m³ large load compartment with six lashing rings as standard, there is also a variety of seating configurations to choose from.

An additional 2-seater bench seat for the third row is optionally available.

Three-point seatbelts, and specially contoured and patented headrests on all seats provide the necessary level of safety while driving. Driver and front passenger airbags come standard on the Caddy Crew Bus. Side and curtain airbags come as an optional extra. After all, safety in the workplace always takes top priority for us.



The Caddy Crew Bus

2 seats



Luggage space length
1,781 mm

3 seats



Luggage space length
1,095 mm

4 seats



Luggage space length
1,095 mm

5 seats



Luggage space length
1,095 mm

Folded



Luggage space length
1,353 mm (folded)

7 seats



Luggage space length
224 mm

The Caddy Maxi Crew Bus

2 seats



Luggage space length
2,250 mm

3 seats



Luggage space length
1,566 mm

4 seats



Luggage space length
1,566 mm

5 seats



Luggage space length
1,566 mm

Folded



Luggage space length
1,823 mm (folded)

7 seats



Luggage space length
644 mm

The standard equipment



Caddy Crew Bus

- 5-speed manual
 - Multi-collision Braking (MCB) System
 - 15" steel wheels
 - 7 seats
 - Manual windows
 - Driver and front passenger airbags (including front passenger deactivation)
 - 'Composition Audio' radio with LCD screen
 - Climatic® airconditioning system
 - Servotronic® power-steering (speed-sensitive)
 - Dual sliding doors
 - Roof rail preparation
 - Rear wing doors with windows
 - Separate daytime running lights (permanently switched on during driving)
 - 3-year / 60,000km EasyDrive Vehicle Service Plans
 - 3-year / 60,000km EasyDrive Vehicle Service Plan
- *Optional on 1.6i model



Caddy Maxi Crew Bus

- 5-speed manual
- Multi-collision Braking (MCB) System
- 16" steel wheels
- 5 seats
- Manual windows
- Driver and front passenger airbags (including front passenger deactivation)
- 'Composition Audio' radio with LCD screen
- Climatic® airconditioning system
- Servotronic® power-steering (speed-sensitive)
- 6 lashing rings
- Dual sliding doors
- Roof rail preparation
- Rear wing doors with windows
- Separate daytime running lights (permanently switched on during driving)
- 2-year / unlimited km manufacturer warranty
- 3-year / 60,000km Volkswagen EasyDrive Vehicle Service Plan

The Caddy Maxi Crew Bus is also available with DSG®, which, in addition to the above, includes:

- 6-speed DSG®
- Rest Assist (fatigue detection)
- 'Plus' multifunction display

Engines



DSG® for 103 kW engines

Dual clutch gearbox DSG®

Thanks to the intelligent gearshift system, the 6-speed gearbox changes fluidly at the right time to the next preselected gear.

The gears can also be changed with a light tap.

1.6 ℓ petrol (81 kW)

Average fuel consumption:
from 7.3 to 8.2 ℓ/100 km

2.0 ℓ TDI (81 kW)

Average fuel consumption:
from 5.7 to 5.8 ℓ/100 km

2.0 ℓ TDI (103 kW)

Average fuel consumption:
from 6.3 ℓ/100 km

TDI

The TDI engines

The fuel-efficient 2.0 ℓ turbo diesel engines with common rail direct injection are available in several performance levels. The 81 kW and 103 kW versions have impressive fuel consumption and emissions values. The 103 kW engines is combined with the dual clutch gearbox DSG®.

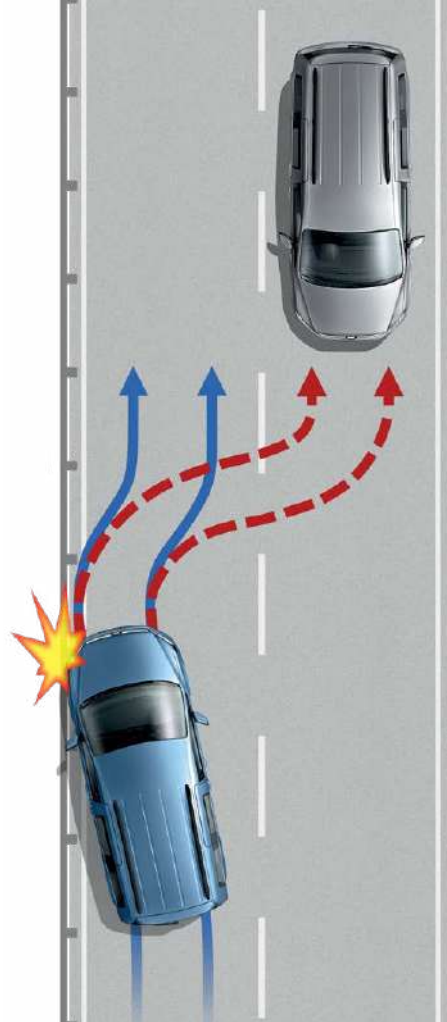
*Fuel consumption and CO₂ emissions values were obtained in accordance with the prescribed uniform measuring standard (SANS 20101: 2006 / ECE R101: 2005 in its currently applicable version). The verified values do not apply to a specific vehicle and do not constitute part of the product offer. They are provided solely for the purposes of comparison between different vehicle models. Because of the need to maintain strict comparability of results achieved by the standard tests, they cannot be fully representative of real-life driving conditions. Variations in driving styles and in road, vehicle and ambient conditions, will have a bearing on the results achieved on the road. For these reasons consumption achieved on the road will not necessarily accord with these verified values. Based on lightest variable (no options) and 90% tank filling. Weight may vary depending on options fitted to vehicle. of comparison between different vehicle models. Because of the need to maintain strict comparability of results achieved by the standard tests, they cannot be fully representative of real-life driving conditions. Variations in driving styles and in road, vehicle and ambient conditions, will have a bearing on the results achieved on the road. For these reasons consumption achieved on the road will not necessarily accord with these verified values. Based on lightest variable (no options) and 90% tank filling. Weight may vary depending on options fitted to vehicle.



The safety systems

Safe. Even in critical situations.

To ensure that every drive ends as stress-free as it begins, the Caddy is equipped with various safety systems, which are activated in critical situations as a preventative measure. The onboard standard equipment is the Multi-collision Braking System. Following an accident, the vehicle begins a phased braking action down to 10 km/h in order to prevent secondary collisions. Should an impact nonetheless result, driver and front passenger airbags come standard. Side and curtain airbags are optional for the driver and front passenger on all Crew Bus models. New contoured and patented headrests will provide optimal protection to passengers.



Electronic Stability Programme (ESP)

It prevents under- or over-steering via targeted braking of individual wheels.



Anti-lock Braking System (ABS)

Prevents wheel block and, thus, maintains manoeuvrability.



Electronic Differential Lock (EDL)

Distributes the engine torque to the tyres without slippage.



Traction Control System (TCS)

Prevents wheelspin.



Automatic Post-collision Braking System

Triggers braking after a collision, with the aim of preventing secondary collisions. This system activates when two independent sensors detect an accident. After a short delay, the vehicle begins a phased braking action down to 10 km/h, during which the driver can take over at any time.



Seatbelt warning

If their seatbelts are not fastened, the seatbelt warning reminds the driver to fasten belt with a visual warning when the engine is started, and an acoustic warning after setting off.



Airbags

Driver and front passenger airbags offer the occupants of the cockpit the best possible protection in the event of head-on impacts. The front passenger airbag can be deactivated using the vehicle key.

All features standard on Caddy Crew Bus

The driver assistance systems

Comfort on the job and on the road.

The Caddy can be fitted with a range of innovative driver assistance systems on request. These constantly analyse driving behaviour, so as to be able to intervene to assist the driver if necessary. Therefore, you and your passengers have even greater comfort on the road.



Driver Alert System (O)

Uses visual and acoustic warning signals to recommend that the driver takes a break as soon as it registers driving behaviour that indicates fatigue.



Brake Assist System (X)

Registers the speed at which the brake pedal is pressed. During a reflexive or emergency braking action, it ensures that full brake pressure is built up more quickly.



Daytime Running Lights (X)

Switch on automatically when the ignition is activated and lower the risk of an accident in daylight.



Hill Start Assist (X)

Prevents the vehicle from rolling back on inclines and makes handling easier when starting up on uphill slopes (available on DSG® models only).



Cruise Control (O)

As of a speed of 30 km/h, it maintains the desired speed depending on uphill and downhill inclines or limits the top speed to a value selected by the driver.



Fog Lights (O)

Ensures optimal visibility in poor weather conditions.



Rear Park Distance Control (PDC) (O)

Emits audible warnings when obstacles are detected behind the vehicle when parking, and also provides a visual display of the vehicle's distance from the obstacles.



"Rear-view" Reversing Camera (O)

Simplifies parking by showing a limited view of the area behind the vehicle on the display of the radio system. Additional static guidelines facilitate the parking process. The reversing camera is only available in combination with the tailgate.

X = standard O = optional

Infotainment

01 Mobile Phone Interface (O) (not illustrated). A wireless Bluetooth interface enables you to make phone calls safely and conveniently during the journey using a microphone and the vehicle loudspeakers.



02 "Comfort" Mobile Phone Interface (O)

The special compartment for your mobile phone has a wireless external aerial connection to optimise your mobile phone reception. Charging the phone is straightforward too: The phone simply has to be connected to the USB port, which is also located in the compartment.



03 Leather-covered Multi-function Steering Wheel (O)

It gives you a good grip and is extremely user-friendly. The radio, a mobile phone or the cruise control can be controlled using the buttons.

04 "Plus" Multi-function Display (not illustrated) (O)

In addition to the functions of the multi-function display, it can be used to adjust the optional Light & Sight package. Standard on DSG® models only and available as an option across the rest of the range.

05 Multi-function Display (not illustrated) (O)

It shows current information, such as the time, remaining range, outside temperature, average consumption, and a gear recommendation for more fuel-efficient driving. Optional across the range with the exception of DSG® models.



06 "Composition Audio" Radio System (X)

The system consists of a TFT monochrome display, a 2 x 20 watt output with two loudspeakers, an SD-card slot, an AUX-IN interface and a USB port. Optional on 1.6i Caddy Crew Bus.



08 "Composition Media" Radio System (O)

The system consists of a 16.5 cm (6.33-inch) TFT colour display, a touchscreen with proximity sensor, an MP3- and WMA-compatible CD drive, a 4 x 20 Watt output with four loudspeakers, a dual tuner with PhaseDiversity for optimal radio reception, an SD-card slot, an AUX-IN interface, a USB port and a Bluetooth connection for mobile phones.

Available on Caddy Maxi Crew Bus models only.

Comfort



01 Lockable Glove Compartment (X)

Documents and valuable items can be kept safe behind the lockable lid, so that they cannot be seen from outside the vehicle.

02 Electric Windows (O)

The flip switches are comfortably located within easy reach in the armrest on the door interiors, and have a comfort switch with jamming protector. Along with the electrically adjustable and heated exterior mirrors, these make up the Electric package.

03 Soft-Touch Opening System (not illustrated) (X)

The tailgate is opened effortlessly using a button on the underside of the number plate light holder.



04 Light & Sight Package (not illustrated) (O)

Sensors dim the rear-view mirror when the lights of the vehicle behind are too bright, and regulate the intervals of the windscreen wipers during rain. The automatic driving light control with daytime running lights switches the headlights on automatically when it starts to get dark. The package also features the manual "coming home" and "leaving home" functions.



06 Airconditioning (O)

The semi-automatic airconditioning has an infinite adjustment, so that a pleasant interior temperature can be ensured at all times.

Exterior



01 Tow Bar Preparation (not illustrated)

The trailer detection control unit and professional wiring allow a trailer coupling to be easily retrofitted at any time.

02 Fixed Tow Bar

It is designed for trailer loads from 660 kg (unbraked) to 1,500 kg (braked), and is also fitted with trailer stabilisation.



03 Bi-Xenon Headlights

The Bi-Xenon headlights produce both high and low beams, and illuminate the roadway significantly better than conventional halogen headlights. They also stand out due to their low energy consumption and high durability.



04 Fog Lights

They ensure a wide illumination of the roadway in thick fog, snow or heavy rain, and make safe driving easier.

Wheels & Rims



Steel Wheel
6 J x 15 with 195/65 R15 tyre
(Standard on short wheelbase models only)



Caloundra
Alloy wheels
6 J x 15 with 195/65 R15 tyre
(Optional on short wheelbase models only)



Bendigo
Alloy wheels
6 J x 16 with 205/55 R16 tyre
(Optional on all Crew Bus models)

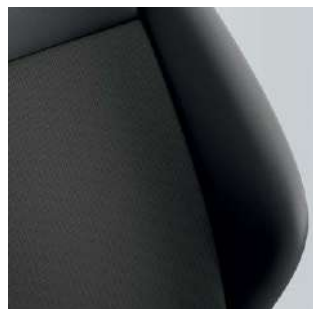


Steel wheel (X)
6 J x 16 with 205/55 R16 tyre
(Standard on Maxi Caddy Crew Bus models only)

Trims



Austin
Cloth seat upholstery
Titanium Black
Standard



Mesh
Leatherette seat upholstery
Titanium Black
Optional

Colours

The illustrations on this page can only be regarded as a general guide as the printing process cannot render the true depth and brilliance of the paint finishes with absolute accuracy. Please note that certain paint and trim combinations may not be available.



Candy White
Solid



Pure Grey
Solid



Cherry Red
Solid



Bright Orange
Solid



Indium Grey
Metallic



Chestnut Brown
Metallic



Reflex Silver
Metallic



Bamboo Garden Green
Metallic



Starlight Blue
Metallic



Acapulco Blue
Metallic



Black Berry
Metallic



Fortana Red
Metallic



Sandstorm Yellow
Metallic



Deep Black
Pearl Effect



Buying a Volkswagen is only the beginning of our journey together

At Volkswagen, it's our mission to keep you and your family moving forward on life's journey. That's why we have a range of products and services designed to keep your Volkswagen in optimum condition and give you peace of mind. From car services and maintenance plans, to genuine parts and roadside assistance, Volkswagen is with you all the way.



EasyDrive Vehicle Plans

You do life,
we'll take care of the ride

Volkswagen's EasyDrive Vehicle Plans offer affordable and easy to understand cover on Service and Maintenance Plans. Our plans offer specialist care from qualified Volkswagen experts, ensuring your vehicle maintains its re-sale value. This way you can get back to enjoying the journey.

Get-Go

Service you know straight
from the Get-Go

The Get-Go service is available to all Volkswagen drivers with a vehicle that's four years or older, and without a Service or Maintenance Plan. You can get an affordable annual service for your Volkswagen by knowing the rate from the get-go. Get-Go Service includes parts and labour and will help you to maintain your service history.

Caddy Crew Bus Specifications

X = standard O = optional - = not available

| Caddy Crew Bus Specification | Caddy Crew Bus 1.6i 81kW SWB 7-Seater | Caddy Crew Bus 2.0 TDI 81kW SWB 7-Seater |
|---|---|--|
| Engine | | |
| Cylinders | 4 | 4 |
| Capacity (cm ³) | 1598 | 1968 |
| Output (kW @ r/min) | 81 @ 5800 | 81 @ 4200 |
| Torque (Nm @ r/min) | 155 @ 3800-4000 | 250 @ 1500-2500 |
| CO ₂ emissions (g/km)* | 166 | 147 |
| Transmission | | |
| 5-speed manual | X | X |
| Performance | | |
| Acceleration in seconds (0-100 km/h) | 12,5 | 12,4 |
| Top speed (km/h) | 172 | 170 |
| Fuel Consumption | | |
| Urban cycle (litres / 100 km)* | 9,1 | 6,8 |
| Extra-urban cycle (litres / 100 km)* | 6,0 | 4,9 |
| Combined cycle (litres / 100 km)* | 7,1 | 5,6 |
| Running Gear | | |
| Standard suspension and shock absorption | X | X |
| Brakes | | |
| ABS (Anti-lock Braking System) | X | X |
| MCB (Automatic Post-collision Braking System) | X | X |
| ESP (Electronic Stability Programme) | X | X |
| EDL (Electronic Differential Lock) | X | X |
| TCS (Traction Control System) | X | X |
| Wheelrims / Tyres | | |
| 15" steel wheels | X | X |
| 16" steel wheels | - | - |
| Tyres 195/65 R15 91T | X | X |
| Tyres 205/55 R16 94T | O | O |
| Full-sized spare wheel (steel) | X | X |
| Dimensions / Capacities | | |
| Fuel tank (litres) | 55 | 55 |
| Length (mm) | 4408 | 4408 |
| Width excl. mirrors (mm) | 1793 | 1793 |
| Width incl. mirrors (mm) | 2065 | 2065 |
| Height excl. roof rails (mm) | 1822 | 1822 |
| Height incl. roof rails (mm) | 1858 | 1858 |
| Wheelbase (mm) | 2682 | 2682 |
| Overhang - front (mm) | 879 | 879 |
| Overhang - rear (mm) | 847 | 847 |

Caddy Crew Bus Specifications

X = standard O = optional - = not available

| Caddy Crew Bus Specification | Caddy Crew Bus 1.6i 81kW SWB 7-Seater | Caddy Crew Bus 2.0 TDI 81kW SWB 7-Seater |
|---|---|--|
| Dimensions / Capacities (continued) | | |
| Ground clearance (measured underneath the engine guard in mm) | 155 | 155 |
| Loading sill over stationary level (mm) | 575 | 575 |
| Loading height (mm) | 1230 | 1230 |
| Approach angle (degrees) | 15,7 | 15,7 |
| Ramp angle (degrees) | 13,5 | 13,5 |
| Departure angle (degrees) | 17,5 | 17,5 |
| Turning circle (m) | 11,1 | 11,1 |
| Load compartment width, min. / max. (mm) | 1168 / 1190 | 1168 / 1190 |
| Load compartment floor length behind 1st / 2nd / 3rd row of seats (mm) | 1781 / 1095 / 224 | 1781 / 1095 / 224 |
| Load / passenger compartment volume, for 2- / 5- / 7-seater (m³) | 3.2 / 0.9 / 0.2 | 3.2 / 0.9 / 0.2 |
| Load / passenger compartment volume, for 2- / 5- / 7-seater (litres) | 3200 / 918 / 190 | 3200 / 918 / 190 |
| Side sliding doors, width x height (mm) | 701 x 1086 | 701 x 1086 |
| Tailgate, width x height (mm) | 1183 x 1134 | 1183 x 1134 |
| Gross Vehicle Mass (GVM) (kg) | 2170 | 2250 |
| Unladen weight, minimum (kg) | 1375 | 1468 |
| Payload, maximum (kg) | 795 | 782 |
| Axle load limit - Front / Rear (kg) | 1000 / 1200 | 1100 / 1200 |
| Trailer weight, 12% gradient - Braked / Unbraked (kg) | 1200 / 680 | 1500 / 730 |
| Gross train weight (kg), 12% gradient | 3300 | 3650 |
| Roof load limit (kg) | 100 | 100 |
| Trailer nose weight (kg) | 75 | 75 |
| Seats | | |
| Number of seats | 7 | 7 |
| 3-seater bench (separately folding and removable) in 2nd row of seats | X | X |
| 'Austin' fabric seat trim covers | X | X |
| Backrest release for driver and front passenger seat | X | X |
| Driver and front passenger seats with drawer preparation | X | X |
| Windows | | |
| Manual windows | X | X |
| Heated rear window | X | X |
| Heat-insulating glass (green) | X | X |
| Heat-insulating windshield made of laminated glass | X | X |
| Mirrors | | |
| Exterior mirrors - adjustable from outside | X | X |
| Wiper System | | |
| Windshield wiper with intermittent control | X | X |
| Rear window wiper and washer system with intermittent control | X | X |
| Safety | | |
| Driver and front passenger airbags (incl. front passenger deactivation) | X | X |
| Rest Assist (fatigue detection) | O | O |

Caddy Crew Bus Specifications

X = standard O = optional - = not available

| Caddy Crew Bus Specification | Caddy Crew Bus 1.6i 81kW SWB 7-Seater | Caddy Crew Bus 2.0 TDI 81kW SWB 7-Seater |
|--|---|--|
| Safety (continued) | | |
| 3-point seatbelts, front | X | X |
| Seatbelts in 2nd and 3rd row of seats | X | X |
| Warning buzzer and light for driver seatbelt not fastened | X | X |
| First Aid kit and warning triangle | X | X |
| Security | | |
| Remote-controlled central locking with SAFELOCK | X | X |
| Anti-theft alarm system with back-up horn, towing protection, interior monitoring and central locking (separate unlocking for driver's door) | X | X |
| Audio and Communication | | |
| 'Composition Audio' radio with LCD screen and integrated USB | X | X |
| 2 speakers | X | X |
| Cellphone interface | X | X |
| Interior Features | | |
| Climatic® airconditioning system | X | X |
| Servotronic® power-steering (speed-sensitive) | X | X |
| Height adjustment for driver's seat | X | X |
| Multi-function display ('Plus') | O | O |
| Dust and pollen filter | X | X |
| Centre console with 4 cup holders (2 front, 2 rear) | X | X |
| Plastic door trim panel and armrest | X | X |
| Sunvisors for driver and front passenger (w/o vanity mirror) | X | X |
| Glove compartment (illuminated) with lockable lid | X | X |
| Rubber floor covering in cab | X | X |
| Rubber floor covering in passenger compartment / load area | X | X |
| Comfort roof headlining in cab with hardboard in load compartment | X | X |
| 12V socket in dashboard | X | X |
| Smokers' package: 12V socket with cigarette lighter and ashtray | X | X |
| Interior lighting | X | X |
| Lashing rings | 4 | 4 |
| Exterior Features | | |
| Grey bumpers | X | X |
| Sliding doors - left and right | X | X |
| Protective side moulding (black) | X | X |
| Exterior mirror housings, door and tailgate handles in black | X | X |
| Roof rail preparation | X | X |
| Rear wing doors with windows | X | X |
| Radiator grille (grained) with 1 chrome moulding | X | X |
| Large side turn signal lights | X | X |
| Towbar preparation (incl. trailer stabilisation) | X | X |
| Halogen headlights | X | X |
| Separate daytime running lights (permanently switched on during driving) | X | X |

Caddy Crew Bus Specifications

X = standard O = optional - = not available

| Caddy Crew Bus Specification | Caddy Crew Bus 1.6i 81kW SWB 7-Seater | Caddy Crew Bus 2.0 TDI 81kW SWB 7-Seater |
|--|---|--|
| Exterior Features (continued) | | |
| Sliding windows in passenger area, front (left and right) | X | X |
| Side windows (rigid) in load compartment / passenger area, rear (left and right) | X | X |
| Options | | |
| 15" 'Caloundra' alloy wheels | O | O |
| 16" 'Bendigo' alloy wheels | O | O |
| 'Mesh' leatherette seat trim covers and armrests | O | O |
| 7-seater package (3-seater bench in 2nd row and 2-seater bench in 3rd row of seats) | X | X |
| Side and curtain airbags for driver and front passenger | O | O |
| Park Distance Control - rear only | O | O |
| 'Composition Media' radio with multi-function leather** steering wheel, Bluetooth, USB interface (iPod, iPad and iPhone capable), multi-function display and Rest Assist (fatigue detection) | O | O |
| Luggage compartment cover, folding and removable (Not avail. with 7-seater package) | - | - |
| Fixed towbar (incl. trailer stabilisation) | O | O |
| Tailgate with window | O | O |
| Comfort Package: Cruise control and front foglights | O | O |
| Electric windows and exterior mirrors | O | O |
| Guarantees | | |
| 2-year / unlimited km manufacturer warranty | X | X |
| 3-year / 60,000 km Volkswagen EasyDrive Vehicle Service Plan | O | X |
| 15,000 km service intervals | X | X |
| 12-year anti-corrosion warranty | X | X |

Disclaimer

- Dimensions, capacities and abilities apply to standard vehicles.
- Actual consumption will vary with vehicle loading, driving style, climatic and road conditions.
- This information was effective as at 01 June 2020 valid for model year 20 and is subject to change without notice.

Vehicle Tare mass given at 90% tank filling without driver (75kg). Selected optional extras increase the unloaded weight of the vehicle.

*Fuel Consumption and Carbon Dioxide Emission Figures

The figures reflected were obtained in accordance with prescribed uniform measuring standards (SANS 20101: 2006 / ECE R101: 2005 in their currently applicable versions) under laboratory type conditions. The measuring standards are stipulated by law. They do not apply to a specific vehicle and are provided to enable comparison between different vehicle models tested using the same uniform measuring standard. The values are accordingly not necessarily representative of real-life driving conditions. Factors such as driving style, vehicle load, road conditions, tyre size, traffic and ambient conditions may result in different fuel consumption and carbon dioxide emission levels to those achieved under the test parameters referred to above. More details are contained in the owner's manual.

**A combination of leather and high quality durable materials.

Caddy Crew Bus Specifications

X = standard O = optional - = not available

| Caddy Crew Bus Specification | Caddy Maxi Crew Bus 2.0 TDI 81kW LWB | Caddy Maxi Crew Bus 2.0 TDI 103kW DSG® LWB |
|---|--|--|
| Engine | | |
| Cylinders | 4 | 4 |
| Capacity (cm³) | 1968 | 1968 |
| Output (kW @ r/min) | 81 @ 4200 | 103 @ 4200 |
| Torque (Nm @ r/min) | 250 @ 1500-2500 | 320 @ 1750-2500 |
| CO ₂ emissions (g/km)* | 149 | 166 |
| Transmission | | |
| 5-speed manual | X | - |
| 6-speed DSG® | - | X |
| Performance | | |
| Acceleration in seconds (0-100 km/h) | 12,8 | 10,9 |
| Top speed (km/h) | 170 | 186 |
| Fuel Consumption | | |
| Urban cycle (litres / 100 km)* | 6,8 | 7,5 |
| Extra-urban cycle (litres / 100 km)* | 4,9 | 5,4 |
| Combined cycle (litres / 100 km)* | 5,6 | 6,2 |
| Running Gear | | |
| Standard suspension and shock absorption | X | X |
| Brakes | | |
| ABS (Anti-lock Braking System) | X | X |
| MCB (Automatic Post-collision Braking System) | X | X |
| ESP (Electronic Stability Programme) | X | X |
| EDL (Electronic Differential Lock) | X | X |
| TCS (Traction Control System) | X | X |
| Hill-hold control | - | X |
| Wheelrims / Tyres | | |
| 16" steel wheels | X | X |
| Tyres 205/55 R16 94T | X | X |
| Full-sized spare wheel (steel) | X | X |
| Dimensions / Capacities | | |
| Fuel tank (litres) | 55 | 55 |
| Length (mm) | 4878 | 4878 |
| Width excl. mirrors (mm) | 1793 | 1793 |
| Width incl. mirrors (mm) | 2065 | 2065 |
| Height excl. roof rails (mm) | 1831 | 1831 |
| Height incl. roof rails (mm) | 1868 | 1868 |
| Wheelbase (mm) | 3006 | 3006 |
| Overhang - front (mm) | 879 | 879 |
| Overhang - rear (mm) | 993 | 993 |

Caddy Crew Bus Specifications

X = standard O = optional - = not available

| Caddy Crew Bus Specification | Caddy Maxi Crew Bus 2.0 TDI 81kW LWB | Caddy Maxi Crew Bus 2.0 TDI 103kW DSG® LWB |
|---|--|--|
| Dimensions / Capacities (continued) | | |
| Ground clearance (measured underneath the engine guard in mm) | 158 | 158 |
| Loading sill over stationary level (mm) | 581 | 581 |
| Loading height (mm) | 1240 | 1240 |
| Approach angle (degrees) | 15,9 | 15,9 |
| Ramp angle (degrees) | 12,1 | 12,1 |
| Departure angle (degrees) | 15,3 | 15,3 |
| Turning circle (m) | 12,2 | 12,2 |
| Load compartment width, min. / max. (mm) | 1168 / 1190 | 1168 / 1190 |
| Load compartment floor length behind 1st / 2nd / 3rd row of seats (mm) | 2250 / 1566 / 644 | 2250 / 1566 / 644 |
| Load / passenger compartment volume, for 2- / 5- / 7-seater (m³) | 4.1 / 1.6 / 0.5 | 4.1 / 1.6 / 0.5 |
| Load / passenger compartment volume, for 2- / 5- / 7-seater (litres) | 4130 / 1650 / 530 | 4130 / 1650 / 530 |
| Side sliding doors, width x height (mm) | 701 x 1084 | 701 x 1084 |
| Tailgate, width x height (mm) | 1183 x 1134 | 1183 x 1134 |
| Gross Vehicle Mass (GVM) (kg) | 2280 | 2380 |
| Unladen weight, minimum (kg) | 1531 | 1582 |
| Payload, maximum (kg) | 749 | 798 |
| Axle load limit - Front / Rear (kg) | 1150 / 1230 | 1751 / 1250 |
| Trailer weight, 12% gradient - Braked / Unbraked (kg) | 1450 / 750 | 1500 / 750 |
| Gross train weight (kg), 12% gradient | 3650 | 3800 |
| Roof load limit (kg) | 100 | 100 |
| Trailer nose weight (kg) | 75 | 75 |
| Seats | | |
| Number of seats | 5 | 5 |
| 3-seater bench (separately folding and removable) in 2nd row of seats | X | X |
| 'Austin' fabric seat trim covers | X | X |
| Backrest release for driver and front passenger seat | X | X |
| Driver and front passenger seats with drawer preparation | X | X |
| Windows | | |
| Manual windows | X | X |
| Heated rear window | X | X |
| Heat-insulating glass (green) | X | X |
| Heat-insulating windshield made of laminated glass | X | X |
| Mirrors | | |
| Exterior mirrors - adjustable from outside | X | X |
| Wiper System | | |
| Windshield wiper with intermittent control | X | X |
| Rear window wiper and washer system with intermittent control | X | X |
| Safety | | |
| Driver and front passenger airbags (incl. front passenger deactivation) | X | X |

Caddy Crew Bus Specifications

X = standard O = optional - = not available

| Caddy Crew Bus Specification | Caddy Maxi Crew Bus 2.0 TDI 81kW LWB | Caddy Maxi Crew Bus 2.0 TDI 103kW DSG® LWB |
|--|--|--|
| Safety (continued) | | |
| Rest Assist (fatigue detection) | O | X |
| 3-point seatbelts, front | X | X |
| Seatbelts in 2nd and 3rd row of seats | X | X |
| Warning buzzer and light for driver seatbelt not fastened | X | X |
| First Aid kit and warning triangle | X | X |
| Security | | |
| Remote-controlled central locking with SAFELOCK | X | X |
| Anti-theft alarm system with back-up horn, towing protection, interior monitoring and central locking (separate unlocking for driver's door) | X | X |
| Audio and Communication | | |
| 'Composition Audio' radio with LCD screen and integrated USB | X | X |
| 2 speakers | X | X |
| Cellphone interface | X | X |
| Interior Features | | |
| Climatic® airconditioning system | X | X |
| Servotronic® power-steering (speed-sensitive) | X | X |
| Height adjustment for driver's seat | X | X |
| Multi-function display ('Plus') | O | X |
| Dust and pollen filter | X | X |
| Centre console with 4 cup holders (2 front, 2 rear) | X | X |
| Plastic door trim panel and armrest | X | X |
| Sunvisors for driver and front passenger (w/o vanity mirror) | X | X |
| Glove compartment (illuminated) with lockable lid | X | X |
| Rubber floor covering in cab | X | X |
| Rubber floor covering in passenger compartment / load area | X | X |
| Comfort roof headlining in cab with hardboard in load compartment | X | X |
| 12V socket in dashboard | X | X |
| Smokers' package: 12V socket with cigarette lighter and ashtray | X | X |
| Interior lighting | X | X |
| Lashing rings | 6 | 6 |
| Exterior Features | | |
| Grey bumpers | X | X |
| Sliding doors - left and right | X | X |
| Protective side moulding (black) | X | X |
| Exterior mirror housings, door and tailgate handles in black | X | X |
| Roof rail preparation | X | X |
| Rear wing doors with windows | X | X |
| Radiator grille (grained) with 1 chrome moulding | X | X |
| Large side-turn signal lights | X | X |

Caddy Crew Bus Specifications

X = standard O = optional - = not available

| Caddy Crew Bus Specification | Caddy Maxi Crew Bus 2.0 TDI 81kW LWB | Caddy Maxi Crew Bus 2.0 TDI 103kW DSG® LWB |
|--|--|--|
| Exterior Features (continued) | | |
| Towbar preparation (incl. trailer stabilisation) | X | X |
| Halogen headlights | X | X |
| Separate daytime running lights (permanently switched on during driving) | X | X |
| Sliding windows in passenger area, front (left and right) | X | X |
| Side windows (rigid) in load compartment / passenger area, rear (left and right) | O | O |
| Options | | |
| 16" 'Bendigo' alloy wheels | O | O |
| 'Mesh' leatherette seat trim covers and armrests | O | O |
| 7-seater package (3-seater bench in 2nd row and 2-seater bench in 3rd row of seats) | O | O |
| Side and curtain airbags for driver and front passenger | O | O |
| Park Distance Control - rear only | O | O |
| 'Composition Media' radio with multi-function leather** steering wheel, Bluetooth, USB interface (iPod, iPad and iPhone capable), multi-function display and Rest Assist (fatigue detection) | O | O |
| Luggage compartment cover, folding and removable (Not avail. with 7-seater package) | O | O |
| Fixed towbar (incl. trailer stabilisation) | O | O |
| Tailgate with window | O | O |
| Comfort Package: Cruise control and front foglights | O | O |
| Electric windows and exterior mirrors | O | O |
| Guarantees | | |
| 2-year / unlimited km manufacturer warranty | X | X |
| 3-year / 60,000 km Volkswagen EasyDrive Vehicle Service Plan | X | X |
| 15,000 km service intervals | X | X |
| 12-year anti-corrosion warranty | X | X |

Disclaimer

1. Dimensions, capacities and abilities apply to standard vehicles.
2. Actual consumption will vary with vehicle loading, driving style, climatic and road conditions.
3. This information was effective as at 01 June 2020 valid for model year 20 and is subject to change without notice.

Vehicle Tare mass given at 90% tank filling without driver (75kg). Selected optional extras increase the unloaded weight of the vehicle.

*Fuel Consumption and Carbon Dioxide Emission Figures

The figures reflected were obtained in accordance with prescribed uniform measuring standards (SANS 20101: 2006 / ECE R101: 2005 in their currently applicable versions) under laboratory type conditions. The measuring standards are stipulated by law. They do not apply to a specific vehicle and are provided to enable comparison between different vehicle models tested using the same uniform measuring standard. The values are accordingly not necessarily representative of real-life driving conditions. Factors such as driving style, vehicle load, road conditions, tyre size, traffic and ambient conditions may result in different fuel consumption and carbon dioxide emission levels to those achieved under the test parameters referred to above. More details are contained in the owner's manual.

**A combination of leather and high quality durable materials.

Caddy Crew Bus Service & Maintenance Plans

| Volkswagen EasyDrive Vehicle Maintenance Plans | Caddy Crew Bus 1.6i 81kW SWB 7-Seater | Caddy Crew Bus 2.0 TDI 81kW SWB 7-Seater | Caddy Maxi Crew Bus 2.0 TDI 81kW LWB | Caddy Maxi Crew Bus 2.0 TDI 103kW DSG® LWB |
|---|--|---|---|---|
| Maintenance Plan (3-year / 45,000 km) | R7,508 | | - | |
| Maintenance Plan (4-year / 60,000 km) | R14,733 | | R4,817 | |
| Maintenance Plan (5-year / 90,000 km) | R25,925 | | R16,008 | |
| Maintenance Plan (5-year / 120,000 km) | R39,808 | | R29,892 | |
| Maintenance Plan (6-year / 150,000 km) | R55,675 | | R45,758 | |
| Maintenance Plan (6-year / 180,000 km) | R69,275 | | R59,358 | |
| Maintenance Plan (7-year / 210,000 km) | R84,858 | | R74,941 | |
| Maintenance Plan (8-year / 240,000 km) | R102,708 | | R92,791 | |
| Maintenance Plan (9-year / 270,000 km) | R118,575 | | 108,658 | |
| Maintenance Plan (10-year / 300,000 km) | R136,283 | | R126,366 | |
| Subject to an Active Standard Volkswagen warranty or an Active Genuine Volkswagen Service Plan | | | | |

| Volkswagen EasyDrive Vehicle Service Plans | Caddy Crew Bus 1.6i 81kW SWB 7-Seater | Caddy Crew Bus 2.0 TDI 81kW SWB 7-Seater | Caddy Maxi Crew Bus 2.0 TDI 81kW LWB | Caddy Maxi Crew Bus 2.0 TDI 103kW DSG® LWB |
|---|--|---|---|---|
| Service Plan (3-year / 45,000 km) | R6,061 | | - | |
| Service Plan (3-year / 60,000 km) | - | | X | |
| Service Plan (4-year / 60,000 km) | R9,341 | | R1,973 | |
| Service Plan (5-year/ 90,000 km) | R14,591 | | R8,694 | |
| Service Plan (5-year/ 120,000 km) | R19,673 | | R14,018 | |
| Service Plan (6-year/ 150,000 km) | R24,521 | | R19,323 | |
| Service Plan (6-year/ 180,000 km) | R29,260 | | R25,125 | |
| Service Plan (7-year / 210,000km) | R32,602 | | R31,013 | |
| Service Plan (8-year / 240,000km) | R37,451 | | R37,911 | |
| Service Plan (9-year / 270,000km) | R44,038 | | R43,215 | |
| Service Plan (10-year / 300,000km) | R49,216 | | R51,174 | |



**Commercial
Vehicles**

This information was effective as at 01 August 2020
valid for model year 20 and is subject to change
without notice.

Visit us at vw.co.za
©Volkswagen South Africa